

4222111

Index No.

E-11

CERTIFICATE OF LOCATION OF GOVERNMENT CORNER

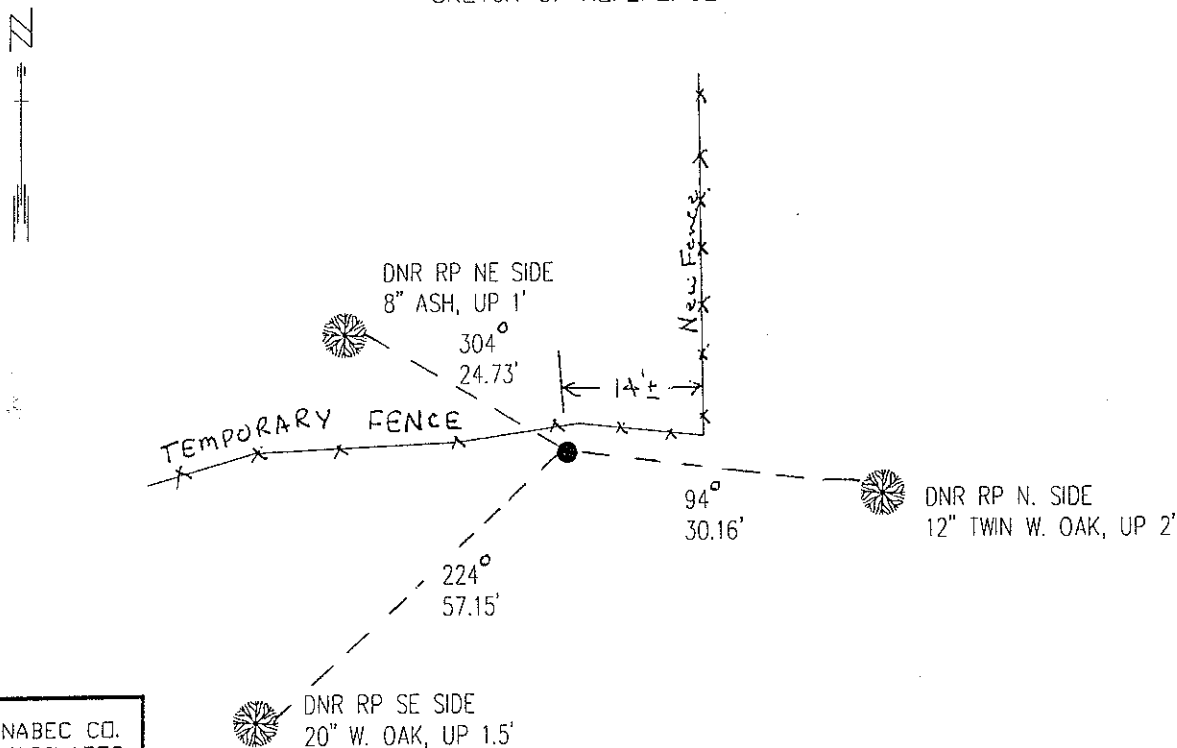
NORTH QUARTER Corner of Section 9 Township 42 Range 22 4TH P.M.

STATE OF MINNESOTA, County of KANABEC

At the corner location shown on the sketch:

- On _____ found a _____
DATE
- left monument as found, lowered monument, removed monument (explain)
- On 10/27/98 Placed a 3/4" X 24" IRON ROD WITH A "MNDNR SURVEY MARKER" CAP
DATE

SKETCH OF REFERENCE TIES



KANABEC CO. COORDINATES

N 250944.38
E 442350.96

AZIMUTHS OBSERVED WITH COMPASS

Statement of evidence relative to this corner location is on back of page.

12/98
WMA00271

I hereby certify that this document and the data contained herein was prepared by me or under my direct supervision.

John D. Walker 12/8/98
SIGNATURE DATE

License Number 16098

- Land Surveyor, Professional Engineer
- County Surveyor, County Engineer

OFFICE OF THE COUNTY RECORDER

County of _____

I hereby certify that this document was filed in the Co. recorders office at _____ M. on the _____ day of _____ A.D., 19____

County Recorder _____

By _____, Deputy

DOCUMENT NO. _____

North Quarter Corner Section 9, Township 42 North, Range 22 West

The DNR Bureau of Engineering contacted the following for survey information:

Minnesota Secretary of State's Office
Kanabec County Recordors's Office
Kanabec County Highway Engineer
Kanabec County Surveyor
Bill Hayden, Land Surveyor
Terrence Johnson, Land Surveyor

1855 U.S. General Land Office notes obtained from the Secretary of State's Office states that a post was set to mark the corner with the following bearing trees marked:

W. Pine 9" N 68° W 16 links (10.56 feet)
Sugar 11" S 41° W 42 links (27.72 feet)

1961 MN DNR Bureau of Engineering states fence corner north and west set by previous survey. Does not denote what was set.

1997 MN DNR Bureau of Engineering searched for the corner at the lost position and found nothing.

1998 MN DNR Bureau of Engineering established a position by single proportion on fence line between section corners and set a DNR Survey Marker. The corners used for the proportion are the Northeast Corner Section 9 and the Northeast Corner Section 8. Ties taken as shown on face of this certificate.

Measurements to section corners east and west are:
S89°11'48"E 2498.24 feet
N88°50'11"W 2498.24 feet

For more information on our survey in this area please contact MN DNR, Bureau of Engineering, Survey Section, 1601 Minnesota Drive, Brainerd, MN 56425