

CERTIFICATE OF LOCATION OF GOVERNMENT CORNER

NORTHEAST Corner of Section 8, Township 42, Range 22, 4TH P.M.

STATE OF MINNESOTA, County of KANABEC

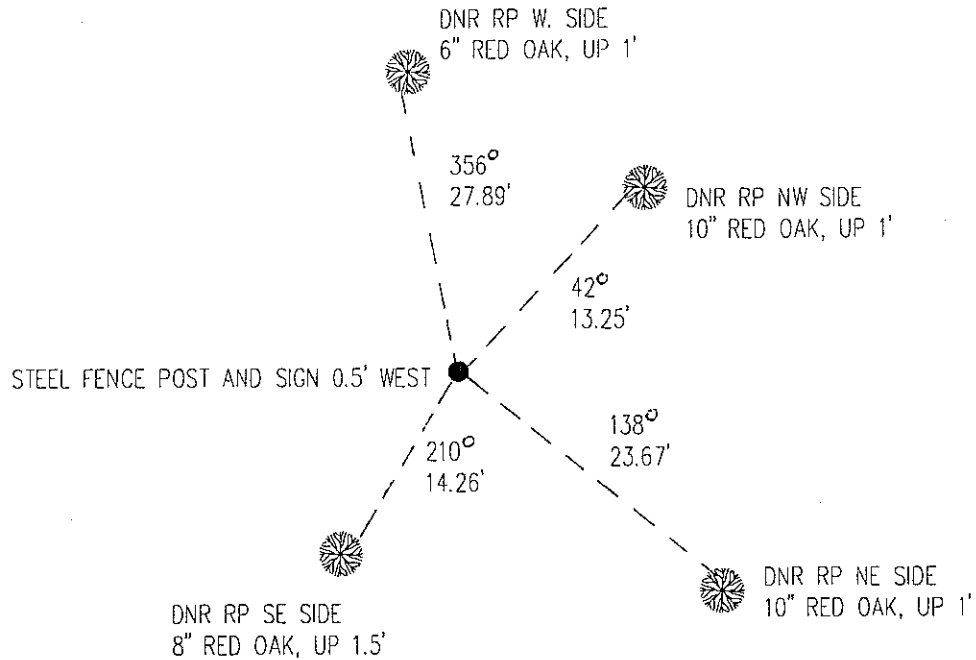
At the corner location shown on the sketch:

■ On 9/9/97 found a 1/2" IRON PIPE WITH A STEEL FENCE POST ON THE WEST SIDE
DATE

■ left monument as found, lowered monument, removed monument (explain)

■ On 8/17/98 Placed a TIES
DATE

SKETCH OF REFERENCE TIES



KANABEC CO. COORDINATES

N 250995.12
E 439853.23

AZIMUTHS OBSERVED WITH COMPASS

Statement of evidence relative to this corner location is on back of page.

12/98
WMA000271

I hereby certify that this document and the data contained herein was prepared by me or under my direct supervision.

John D. Walker 12/8/98
SIGNATURE DATE

License Number 16098

■ Land Surveyor, Professional Engineer
 County Surveyor, County Engineer

OFFICE OF THE COUNTY RECORDER

County of _____

I hereby certify that this document was filed in the Co. recorders office at _____ M. on the _____ day of _____ A.D., 19__

County Recorder _____

By _____, Deputy

DOCUMENT NO. _____

Northeast Corner Section 8, Township 42 North, Range 22 West

The DNR Bureau of Engineering contacted the following for survey information:

Minnesota Secretary of State's Office
Kanabec County Recorders's Office
Kanabec County Highway Engineer
Kanabec County Surveyor
Bill Hayden, Land Surveyor
Terrence Johnson, Land Surveyor

1855 U.S. General Land Office notes obtained from the Secretary of State's Office states that a post was set to mark the corner with the following bearing trees marked:

N. Pine 30" N 74° E 56 links (36.96 feet)
Aspen 13" N 14° 30' W 29 links (19.14 feet)
Sugar 6" S 72° 30' W 30 links (19.80 feet)
W. Pine 36" S 73° E 38 links (25.08 feet)

1961 MN. Dept. Nat. Resources set iron pipe by following a fence assumed the corner.

1998 MN DNR Bureau of Engineering accepted the iron pipe as the corner and ties were taken as shown on the face of this certificate. Measurements to the quarter section corners north, south, east, and west are:

N01°20'44"E 2589.30 feet
S02°00'28"W 2642.94 feet
S88°50'11"E 2498.24 feet
S89°47'51"W 2623.97 feet

For more information on our survey in this area please contact MN DNR, Bureau of Engineering, Survey Section, 1601 Minnesota Drive, Brainerd, MN 56425