

4222108

CERTIFICATE OF LOCATION OF GOVERNMENT CORNER

NORTH QUARTER Corner of Section 16, Township 42, Range 22, 4TH P.M.

STATE OF MINNESOTA, County of KANABEC

At the corner location shown on the sketch:

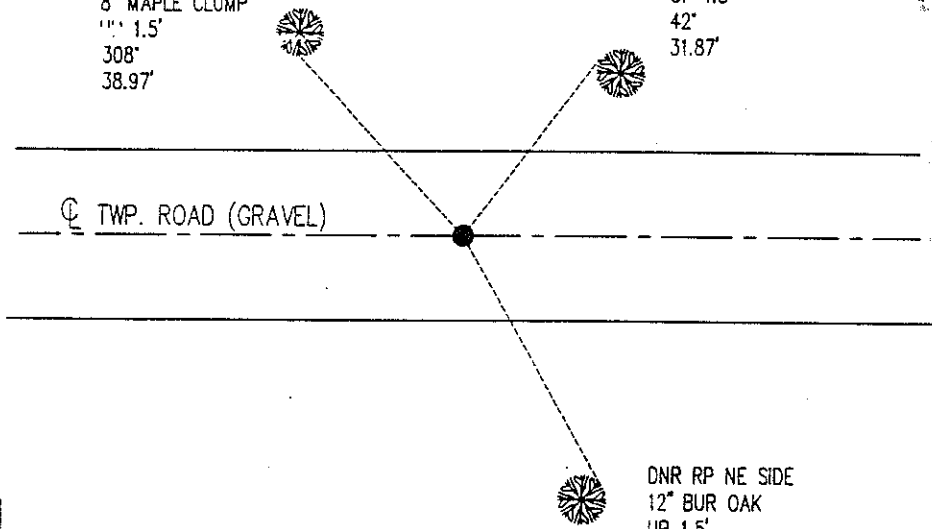
- On _____ found a _____
DATE
- left monument as found, lowered monument, removed monument (explain)
- On 5/19/99 Placed a 3/4" X 24" IRON ROD WITH "MNDNR SURVEY MARKER" CAP
DATE

SKETCH OF REFERENCE TIES



DNR RP SOUTH TRUNK
8" MAPLE CLUMP
" " 1.5'
308"
38.97'

DNR RP NW SIDE
16" BUR OAK
UP 1.5'
42"
31.87'



Ⓞ TWP. ROAD (GRAVEL)

DNR RP NE SIDE
12" BUR OAK
UP 1.5'
157"
46.58'

KANABEC CO. COORDINATES

N 245653.85
E 442304.97

AZIMUTHS OBSERVED WITH COMPASS

Statement of evidence relative to this corner location is on back of page.

6/99
WMA00271

I hereby certify that this document and the data contained herein was prepared by me or under my direct supervision.

John D. Walker 6/30/99
SIGNATURE DATE

License Number 16098

- Land Surveyor, Professional Engineer
- County Surveyor, County Engineer

OFFICE OF THE COUNTY RECORDER

County of _____

I hereby certify that this document was filed in the Co. recorders office at _____ .M. on the _____ day of _____ A.D., 19____

County Recorder _____

By _____, Deputy

DOCUMENT NO. _____

North Quarter Corner Section 16, Township 42 North, Range 22 West

The DNR Bureau of Engineering contacted the following for survey information:

Minnesota Secretary of State's Office
 Kanabec County Recordors's Office
 Kanabec County Highway Engineer
 Kanabec County Surveyor
 Bill Hayden, Land Surveyor
 Terrence Johnson, Land Surveyor

1855 U.S. General Land Office notes obtained from the Secretary of State's Office states that a post was set to mark the corner with the following bearing trees marked:

Elm 12" S 73° E 20 links (13.20 feet)
 Elm 5" N 36° 30' W 12 links (7.92 feet)

1909 County Surveyor, John Nelson, surveyed a road through the quarter corner. Set stake for quarter corner at 39.46 chains from NE section corner.

1997 MN DNR Bureau of Engineering searched for the corner at the lost position and found nothing.

1998 MN DNR Bureau of Engineering considered this corner lost and established a position for it by single proportion and on centerline of road and set a DNR Survey Marker. The corners used for the proportion are the Northeast Corner Section 16 and the Northeast Corner Section 17.

1999 MN DNR Bureau of Engineering dug for the northeast and northwest corners of this section. The northeast corner was found. This changed the lost position of this corner by 0.86' east. The previously set DNR Survey Marker was removed and reset at this new position. The measurements to the section corners east and west are:

S89°16'21"E 2635.86 feet
 N88°55'48"W 2635.86 feet

For more information on our survey in this area please contact MN DNR, Bureau of Engineering, Survey Section, 1601 Minnesota Drive, Brainerd, MN 56425