

CERTIFICATE OF LOCATION OF GOVERNMENT CORNER

NORTHEAST Corner of Section 17, Township 42, Range 22, 4TH P.M.

STATE OF MINNESOTA, County of KANABEC

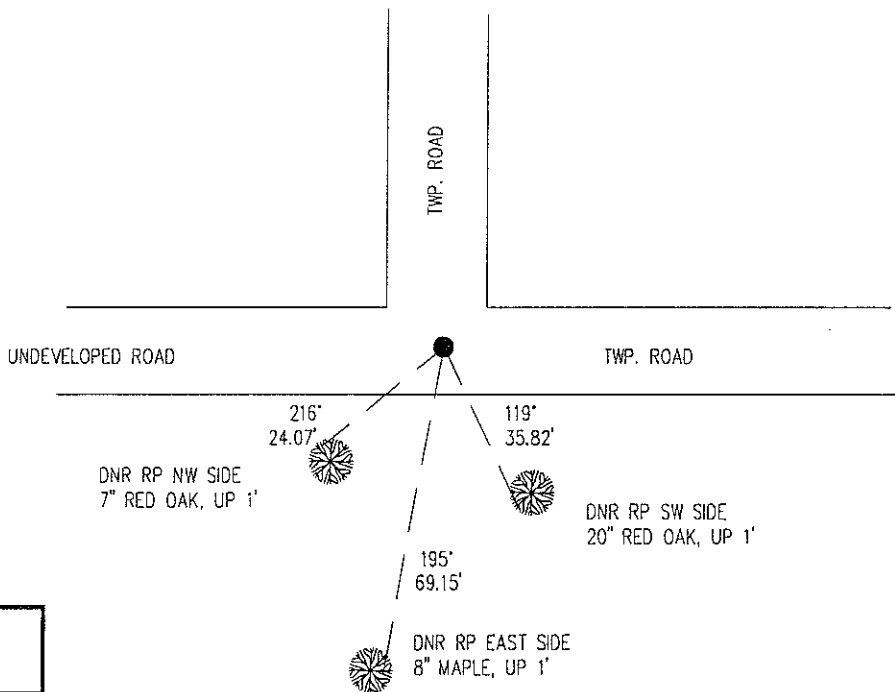
At the corner location shown on the sketch:

On _____ found a _____
DATE

left monument as found, lowered monument, removed monument (explain)

On 10/14/98 Placed a 3/4" X 24" IRON ROD WITH "MNDNR SURVEY MARKER" CAP
DATE

SKETCH OF REFERENCE TIES



KANABEC CO.
COORDINATES

N 245703.08
E 439669.58

AZIMUTHS OBSERVED WITH COMPASS

Statement of evidence relative to this corner location is on back of page.

12/98
WMA00271

I hereby certify that this document and the data contained herein was prepared by me or under

my direct supervision.
John D. Walker 6/30/99
SIGNATURE DATE

License Number 16098

Land Surveyor, Professional Engineer

County Surveyor, County Engineer

OFFICE OF THE COUNTY RECORDER
County of _____

I hereby certify that this document was filed in the Co. recorders office at _____ .M. on the _____ day of _____ A.D., 19____

County Recorder _____
By _____, Deputy

DOCUMENT NO. _____

Northeast Corner Section 17, Township 42 North, Range 22 West

The DNR Bureau of Engineering contacted the following for survey information:

Minnesota Secretary of State's Office
 Kanabec County Recorders's Office
 Kanabec County Highway Engineer
 Kanabec County Surveyor
 Bill Hayden, Land Surveyor
 Terrence Johnson, Land Surveyor

1855 U.S. General Land Office notes obtained from the Secretary of State's Office states that a post was set to mark the corner with the following bearing trees marked:

Spruce 16" S 73° 30' E 20 links (13.20 feet)
 Aspen 10" S 50° 30' W 18 links (11.88 feet)
 Aspen 12" N 48° 30' W 42 links (27.72 feet)
 Sugar 15" N 44° E 26 links (17.16 feet)

1909 County Surveyor, John Nelson, surveyed a road through the section corner with the following bearing trees marked:

Balsam 10" N 14° 30' W 60 links (39.60 feet)
 Balsam 7" S 55° 30' E 40 links (26.40 feet)

1961 MN DNR Bureau of Engineering assumed the section corner to be the intersection of roads.

1997 MN DNR Bureau of Engineering searched for the corner at the road intersection and found nothing.

1998 MN DNR Bureau of Engineering set a DNR Survey Marker at the intersection roads north, east, and trail west. Ties taken as shown on the face of this certificate. Measurements to the quarter section corners north, east and west are:

N01°58'02"E 2652.29 feet
 S88°55'48"E 2634.99 feet
 N89°43'35"W 2602.47 feet

1999 In May, the MN DNR Bureau of Engineering used the Kanabec County Engineers backhoe and operator to dig for this corner. Nothing was found. Left corner as previously established.

For more information on our survey in this area please contact MN DNR, Bureau of Engineering, Survey Section, 1601 Minnesota Drive, Brainerd, MN 56425