

CERTIFICATE OF LOCATION OF GOVERNMENT CORNER

EAST QUARTER Corner of Section 29, Township 42, Range 22, 4TH P.M.

STATE OF MINNESOTA, County of KANABEC

At the corner location shown on the sketch:

ON 5/5/2014 SET A 4' BY 1/2" IRON PIPE WITH KANABEC COUNTY CAP IN SWAMP. NO TIES AVAILABLE.

Kanabec County U.S. Survey Feet Coordinates
NAD 1983, HARN 1996 Adjustment
Obtained by RTK GPS Observation

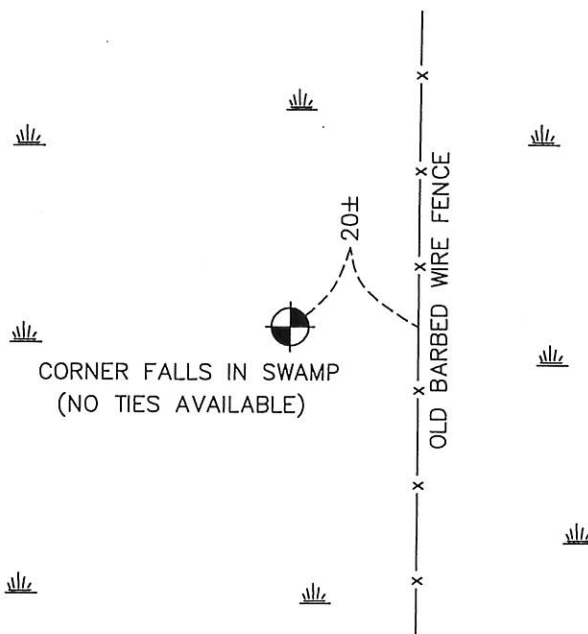
Northing= 232565.56

Easting= 439649.33

Note: NAD 1983, HARN 1996 Adjustment
coordinates are NOT compatible with
NAD 1983 coordinates

Note: 1 Meter=3937/1200 U.S. Survey Feet

SKETCH OF REFERENCE TIES



Statement of evidence relative to this corner location is on back of page.

I hereby certify that this document and the data contained herein was prepared by me or under my direct supervision.

Ernest J. Rud
Signature

12-10-19
Date

Registration No. 9808

Land Surveyor, [] Professional Engineer

[] County Surveyor, [] County Engineer

OFFICE OF THE COUNTY RECORDER

County of _____

I hereby certify that this document was filed in the County Recorder's office at _____ M. on the _____ day of _____ A.D., 20 _____

County Recorder _____

BY _____ Deputy

DOCUMENT NO. _____

STATEMENT OF EVIDENCE

THE ORIGINAL GOVERNMENT POST WAS SET BY DEPUTY SURVEYOR SILAS BARNARD ON NOVEMBER 23, 1885 AND 2 BEARING TREES NOTED AS:

10" SPURCE BEARING N45°15'E AT 21 LINKS

6" SPRUCE BEARING S58°30'W AT 14 LINKS

NO EVIDENCE FOR CORNER OR ACCESSORIES REMAINS.

NO SUBSEQUENT SURVEYS COULD BE FOUND AT THE KANABEC COUNTY OFFICES OR THE DNR.

NO ROAD OPENINGS HAD BEEN FILED ALONG THIS LINE.

THIS CORNER FALLS IN A WET SWAMPY AREA WITH NO LINES OF OCCUPATION.

THE ONLY OCCUPATION LINE IS AN OLD FENCE LINE RUNNING NORTH-SOUTH.

WITH NO FOUND EVIDENCE, WE CONSIDERED THIS CORNER LOST AND SET IT ACCORDINGLY. ON MAY 5, 2014 SET A 1/2" BY 4' WITH AN ALUMINUM CAP AND ESTABLISHED KANABEC COUNTY COORDINATES ON THIS LOCATION.