

CERTIFICATE OF LOCATION OF GOVERNMENT CORNER

NORTH QUARTER Corner of Section 33, Township 42, Range 22, 4TH P.M.

STATE OF MINNESOTA, County of KANABEC

At the corner location shown on the sketch:
IN APR. 2010 FOUND A 1/2" IRON PIPE

Kanabec County U.S. Survey Feet Coordinates
NAD 1983, HARN 1996 Adjustment
Obtained by RTK GPS Observation

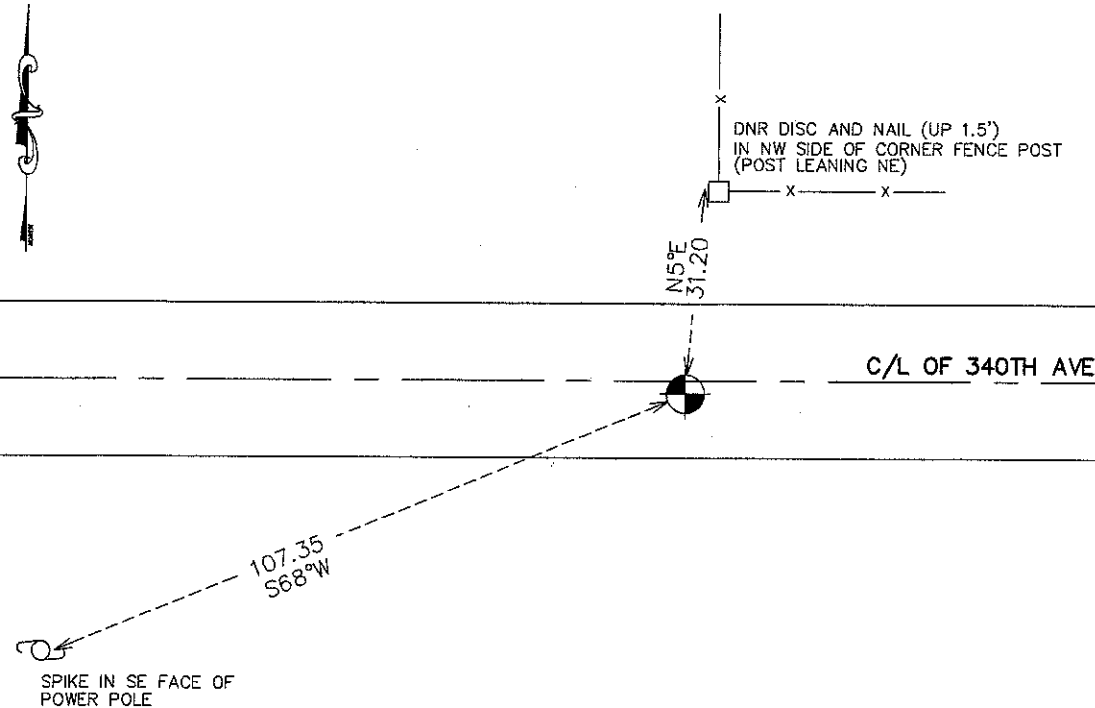
Northing= 229907.91

Easting= 442254.50

Note: NAD 1983, HARN 1996 Adjustment
coordinates are NOT compatible with
NAD 1983 coordinates

Note: 1 Meter=3937/1200 U.S. Survey Feet

SKETCH OF REFERENCE TIES



Statement of evidence relative to this corner location is on back of page.

I hereby certify that this document and the data contained herein was prepared by me or under my direct supervision.

Ernest Rud
Signature

11-27-10
Date

Registration No. 9808

- Land Surveyor, [] Professional Engineer
[] County Surveyor, [] County Engineer

OFFICE OF THE COUNTY RECORDER

County of _____

I hereby certify that this document was filed in the County Recorder's office at _____ M. on the _____ day of _____ A.D., 20____

County Recorder _____

BY _____ Deputy

DOCUMENT NO. _____

STATEMENT OF EVIDENCE

THE DEPT. OF NATURAL RESOURCES, BUREAU OF ENGINEERING (BOE) MADE THE FOLLOWING CONTACTS CONCERNING THIS CORNER

**MINNESOTA SECRETARY OF STATES OFFICE
COUNTY AUDITOR, ENGINEER, RECORDER AND SURVEYOR**

1855 THE U.S. GENERAL LAND OFFICE SET A POST TO MARK THIS CORNER AND THE FOLLOWING BEARING TREES WERE MARKED:

5" ELM @ 25 LINKS (16.5') BEARING N25°W

1903 SURVEYOR JOHN NELSON MADE A SURVEY OF SEVERAL ROADS IN THE TOWNSHIP OF KROSCHER. HE ESTABLISHED A ROAD ALONG THE NORTH LINE OF SEC. 32, 33 AND 34. HE MEASURED 79.80 CHAINS BETWEEN THE NE CORNER OF SEC. 33 AND THE NW CORNER OF SEC. 33. HE STATES ALL THE CORNERS ON THE PLAT MARKED "G" INDICATE CORNERS THAT WERE FOUND GOV'T MARKS AT THE TIME OF THIS SURVEY. (NO MARKS ARE ON THE PLAT ON PAGE 315.)

1904 SURVEYOR JOHN NELSON MADE A SURVEY FOR A TOWNSHIP ROAD BETWEEN THE FOLLOWING SECTIONS: 28 & 33, 29 & 32, 29 & 30, 20 & 29, 19 & 30. HE SHOWS A MEASUREMENT OF 79.21 CHAINS ALONG THE NORTH LINE OF SEC. 33.

1995 THE BOE SEARCHED FOR THIS CORNER AT THE LOST POSITION BETWEEN SEC. CORNERS. NOTHING WAS FOUND. THE CORNER WAS ACCEPTED AS LOST AND A DNR SURVEY MARKER WAS SET TO MARK THE CORNER. THE DISTANCE TO THE SEC. CORNERS EAST AND WEST IS 2617.12'.

APR 2010 E.G. RUD AND SONS, INC. FOUND A 1/2" IRON PIPE AT THIS LOCATION AND CHECKED THE ONE TIE. NEW TIES WERE TAKEN AND KANABEC COUNTY COORDINATES WERE ESTABLISHED ON THIS POSITION.