

CERTIFICATE OF LOCATION OF GOVERNMENT CORNER

NORTHEAST Corner of Section 32, Township 42, Range 22, 4TH P.M.

STATE OF MINNESOTA, County of KANABEC

At the corner location shown on the sketch:
ON 4/27/2010 FOUND A BENT REABAR AND REPLACED WITH
KANABEC COUNTY MONUMENT.

Kanabec County U.S. Survey Feet Coordinates
NAD 1983, HARN 1996 Adjustment
Obtained by RTK GPS Observation

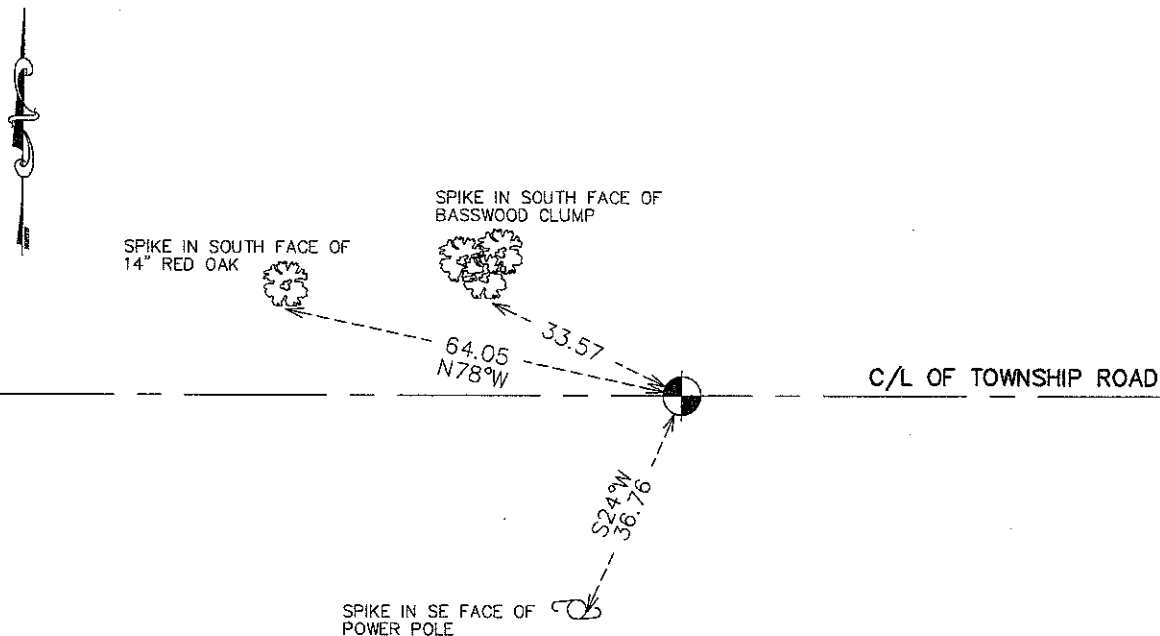
Northing= 229938.06

Easting= 439637.70

Note: NAD 1983; HARN 1996 Adjustment
coordinates are NOT compatible with
NAD 1983 coordinates

Note: 1 Meter=3937/1200 U.S. Survey Feet

SKETCH OF REFERENCE TIES



Statement of evidence relative to this corner location is on back of page.

I hereby certify that this document and the data contained herein was prepared by me or under my direct supervision.

Ernest Rud
Signature

11-27-10
Date

Registration No. 9808

Land Surveyor, Professional Engineer

County Surveyor, County Engineer

OFFICE OF THE COUNTY RECORDER

County of _____

I hereby certify that this document was filed in the County Recorder's office at _____ M. on the

_____ day of _____ A.D., 20__

County Recorder _____

BY _____ Deputy

DOCUMENT NO. _____

NE CORNER, SEC. 32, T42, R22

STATEMENT OF EVIDENCE

THE DEPT. OF NATURAL RESOURCES, BUREAU OF ENGINEERING (BOE) MADE THE FOLLOWING CONTACTS FOR INFORMATION CONCERNING THIS CORNER:

MINNESOTA SECRETARY OF STATES OFFICE
COUNTY AUDITOR, ENGINEER, RECORDER AND SURVEYOR

1855 THE U.S. GENERAL LAND OFFICE SET A POST TO MARK THIS CORNER AND THE FOLLOWING BEARING TREES WERE MARKED:

WHITE BIRCH 6"	S10°W	18 LINKS (11.88')
WHITE PINE 11"	N60°W	16 LINKS (10.56')
WHITE PINE 14"	S49°30'E	59 LINKS (38.94')
BALSAM 6"	N08°E	65 LINKS (42.90')

1903 SURVEYOR JOHN NELSON MADE A SURVEY OF SEVERAL ROADS IN THE TOWNSHIP OF KROSCHER. HE ESTABLISHED A ROAD ALONG THE NORTH LINE OF SEC. 32, 33 AND 34. HE MEASURED 79.80 CHAINS ALONG THE NORTH LINE OF SEC. 33 AND 79.44 CHAINS ALONG THE NORTH LINE OF SEC. 32. HE STATES ALL THE CORNERS ON THE PLAT MARKED "G" INDICATE CORNERS THAT WERE FOUND GOV'T MARKS AT THE TIME OF THIS SURVEY. (NO MARKS ARE ON THE PLAT ON PAGE 315.)

1904 SURVEYOR JOHN NELSON MADE A SURVEY FOR A TOWNSHIP ROAD BETWEEN THE FOLLOWING SECTIONS: 28 & 33, 29 & 32, 29 & 30, 20 & 29, 19 & 30. HE SHOWS A MEASUREMENT OF 79.21 CHAINS ALONG THE NORTH LINE OF SEC. 33 AND 79.43 CHAINS ALONG THE NORTH LINE OF SEC. 32.

1920 COUNTY SURVEYOR GEO. JENKS FOUND AN OLD POST AND GOV. BT TO MARK THIS CORNER AND PLACED A SANDSTONE MARKED "X". HE TOOK THE FOLLOWING TIES:

BLAZED PINE STUMP SE 41.0'

BLAZED FENCE POST S 35.5'

HE FILED THE CERTIFICATE IN 1925

1917 KROSCHER TOWNSHIP ROAD ORDER FOR A ROAD TO BE LAID OUT BETWEEN SEC. 32 AND 33.

1995 THE BOE FOUND NOTHING WITH THE METAL LOCATOR ON THE CENTERLINE OF THE EAST-WEST ROAD. A POSITION USING THE PROPORTION FROM THE 1903 SURVEY WAS SEARCHED AND THE COUNTY HIGHWAY DEPT. WAS HIRED TO DIG HERE FOR THE CORNER. A 12' NORTH-SOUTH BY 12' EAST-WEST HOLE WAS DUG TO A DEPTH OF 3'. STONES AND WOOD DEBRIS WAS FOUND. NONE OF THE STONES LOOKED SET NOR DID THEY HAVE AN "X" ON THEM. POSITIONS FOR THIS CORNER WERE COMPUTED USING THE SECTION CORNERS EAST AND WEST. THE GLO PROPORTION FALLS 5232.88' EASTERLY OF THE NW CORNER OF SEC. 32; THE 1903 PROPORTION FALLS 5210.65' EASTERLY AND THE 1904 PROPORTION FALLS 5229.69' EASTERLY. THE GLO DISTANCE ACROSS THE TWO SECTIONS IS 125.7' OR 1.9 CHAINS LONG; THE 1903 DISTANCE IS 65.0' OR 1.0 CHAINS LONG AND THE 1904 DISTANCE IS 25.4' OR 0.38 CHAINS LONG. THE 1903 PROPORTION WAS ACCEPTED AS MARKING THE OBLITERATED POSITION FOR THIS CORNER. THIS CORNER WAS USED OVER THE OTHER POSITIONS AS IT FIT THE LOCATION OF AN OLD ROAD SOUTH THAT STARTS ABOUT 500' SOUTH OF THE CORNER.

FOR INFORMATION REGARDING THIS SURVEY, CONTACT THE MN DEPT. OF NATURAL RESOURCES, BUREAU OF ENGINEERING, SURVEY SECTION, 500 LAFAYETTE RD, ST PAUL, MN 55155-4029

ON APR 27, 2010, E.G. RUD AND SONS, INC. FOUND THIS REBAR BEING BENT, SET A NEW MONUMENT, TOOK NEW TIES AND ESTABLISHED KANABEC COUNTY COORDINATES ON THIS POSITION.