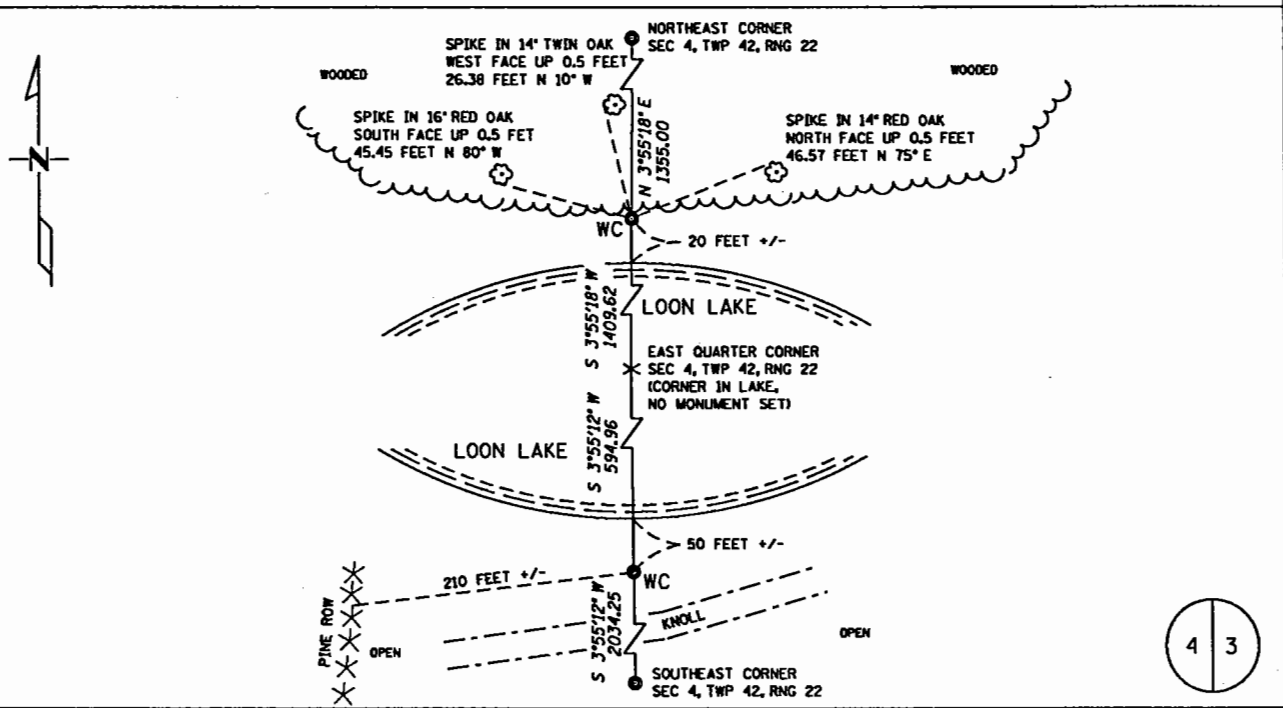


CERTIFICATE OF LOCATION OF GOVERNMENT CORNER

EAST QUARTER Corner of Section 4, Township 42N, Range 22W
4TH Principal Meridian, State of Minnesota, County of KANABEC

At the corner location shown on the sketch:

- On 11/18/2004 found a NOTHING
DATE
- left monument as found lowered monument removed monument (explain)
- On 11/18/2004 placed W.C.s USING 3/4 INCH IRON PIPES W/ CAPS STAMPED "RLS 40341"
DATE



Statement of evidence for this corner location is on back of this page.

I hereby certify that this document was researched and prepared by me or under my direct supervision.

Signature _____ Date _____ License No. 40341

Title: Land Surveyor Professional Engineer County Surveyor County Engineer

Statement of Evidence: East Quarter Corner of Section 4, Township 42, Range 22 West, 4th Principal Meridian, Morrison County Minnesota.

In 1855, during the original United States G.L.O. Survey, this corner was established. The distance from the northeast corner of Section 4 at 40.00 chains from opposing section corners. A wood post was set and records was made to the following bearing trees:

- 7" dia. Birch, N67°W, @ 14 links
- 10" dia. Birch, N50°E, @ 47 links
- 10" dia. Birch, S75°E, @ 13 links
- 20" dia. B Oak, N60°W, @ 36 links

In 1999 the Minnesota Department of Natural Resources (MN DNR) performed a survey of the Lake Five Wildlife Management Area in to the west and south in Sections 5, 8, and 9.

In October, 2004, Kramer Leas DeLeo, Inc. performed a survey in Northwest Quarter of Section 4. Evidence of the wood post, bearing trees, or lines of occupation (other than the township road to the west) was not found at this time. The nearest opposing section corners found to be marked by a monument were the northeast corner of Section 5 (MN DNR Monument) and the northeast corner of Section 2 (Iron pipe with plastic cap, unreadable). The distances were found to measure 5239.76 feet per mile over the 2 miles between the found monuments. The corner position was established using single proportional measure between the corresponding corners and 5/8" diameter iron pin with plastic cap stamped "RLS 40341" was set and reference times were recorded.