

CERTIFICATE OF LOCATION OF GOVERNMENT CORNER

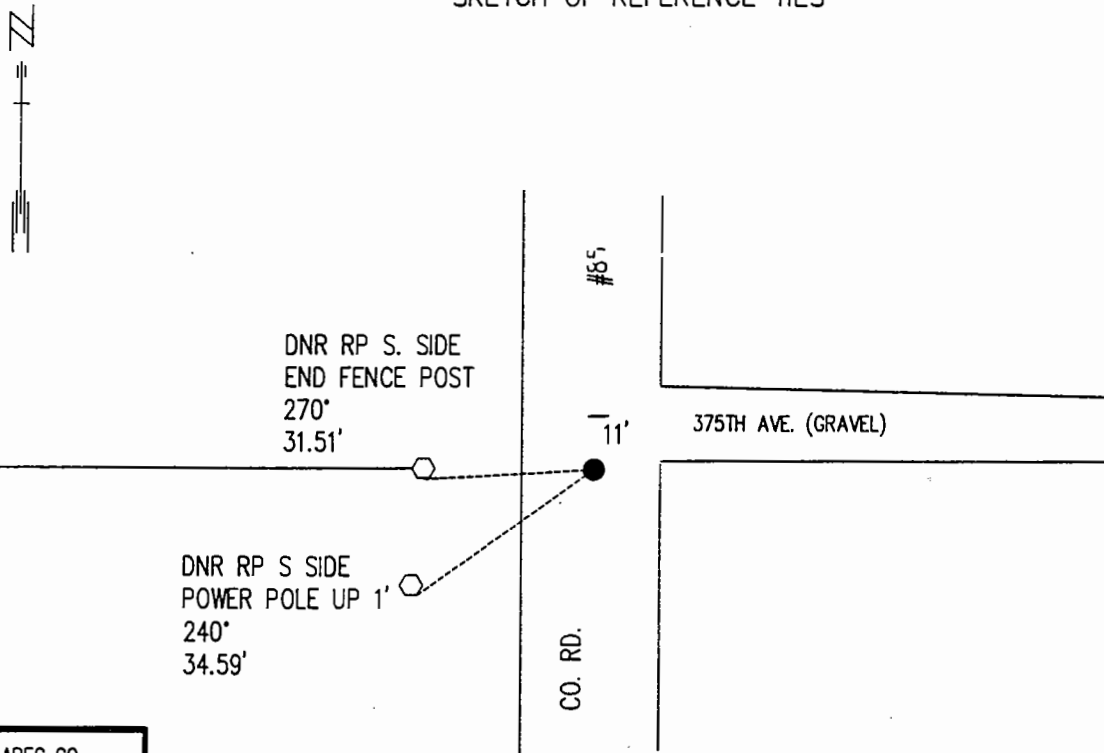
EAST QUARTER Corner of Section 9, Township 42, Range 22, 4TH P.M.

STATE OF MINNESOTA, County of KANABEC

At the corner location shown on the sketch:

- On 5/18/99 found a 1" x 16" IRON PIPE (DOWN 2.5'), A 3"x16" CEDAR POST AND A
DATE 13"x 10"x 8" STONE WITH AN "+" ON TOP (DOWN 3').
- left monument as found, lowered monument, removed monument (explain)
- On 5/18/99 Placed a 3/4" X 24" IRON ROD WITH "MN DNR SURVEY MARKER" CAP (DOWN 0.5')
DATE

SKETCH OF REFERENCE TIES



KANABEC CO.
COORDINATES

N 248259.14
E 444884.08

AZIMUTHS OBSERVED WITH COMPASS

Statement of evidence relative to this corner location is on back of page.

6/99
WMA00271

I hereby certify that this document and the data contained herein was prepared by me or under my direct supervision.

John D. Walker 6/30/99
SIGNATURE DATE

License Number 16098

- Land Surveyor, Professional Engineer
- County Surveyor, County Engineer

OFFICE OF THE COUNTY RECORDER

County of _____

I hereby certify that this document was filed in the Co. recorders office at _____ .M. on the _____ day of _____ A.D., 19____

County Recorder _____
 By _____, Deputy

DOCUMENT NO. _____

East Quarter Corner Section 9, Township 42 North, Range 22 West

The DNR Bureau of Engineering contacted the following for survey information:

Minnesota Secretary of State's Office
 Kanabec County Recorders's Office
 Kanabec County Highway Engineer
 Kanabec County Surveyor
 Bill Hayden, Land Surveyor
 Terrence Johnson, Land Surveyor

- 1855 U.S. General Land Office notes obtained from the Secretary of State's Office states that a post was set to mark the corner with the following bearing trees marked:
 W. Birch 10" N 89° 30' E 3 links (1.98 feet)
 W. Birch 14" N 88° 30' W 7 links (4.62 feet)
- 1903 County Surveyor, John Nelson, surveyed a road to the quarter corner from west quarter section 11, 83.11 chains, thence north to north west corner section 10, 40.06 chains. He established a quarter corner with the following tree marked:
 Pine stump 24" S 8° W 0.23 chains (15.18 feet)
- 1961 MN DNR assumed the corner at an intersection fence and centerline road.
- 1998 MN DNR Bureau of Engineering established this corner at the intersection of a fence line west and centerline of the county road and set a DNR Survey Marker.
- 1999 In May the MN DNR Bureau of Engineering used the Kanabec County Engineers backhoe and operator to dig a 10 foot E-W x 15 foot N-S x 3 foot deep hole at the corner area. A 1" x 16" iron pipe was found at a depth of 2.5 feet. A 5" x 16" cedar post and a 13" x 10" x 8" stone with a + on top was found at a depth of 3 feet. Dug 1 foot below stone but found nothing else. Reset stone as found. Reset the iron pipe at west edge of stone (0.2 feet below top of stone) and reset the cedar post at the north edge of stone. The stone was accepted as the corner. A DNR Survey Marker was set directly over the stone at a depth of 0.5 feet and ties were taken as shown on the face of this certificate.
 Measurements to the section corners north and south are:
 N00°45'33"W 2650.44 feet
 S01°13'39"E 2639.36 feet

For more information on our survey in this area please contact MN DNR, Bureau of Engineering, Survey Section, 1601 Minnesota Drive, Brainerd, MN 56425