

4222091

CERTIFICATE OF LOCATION OF GOVERNMENT CORNER

NORTHEAST Corner of Section 16, Township 42, Range 22, 4TH P.M.

STATE OF MINNESOTA, County of KANABEC

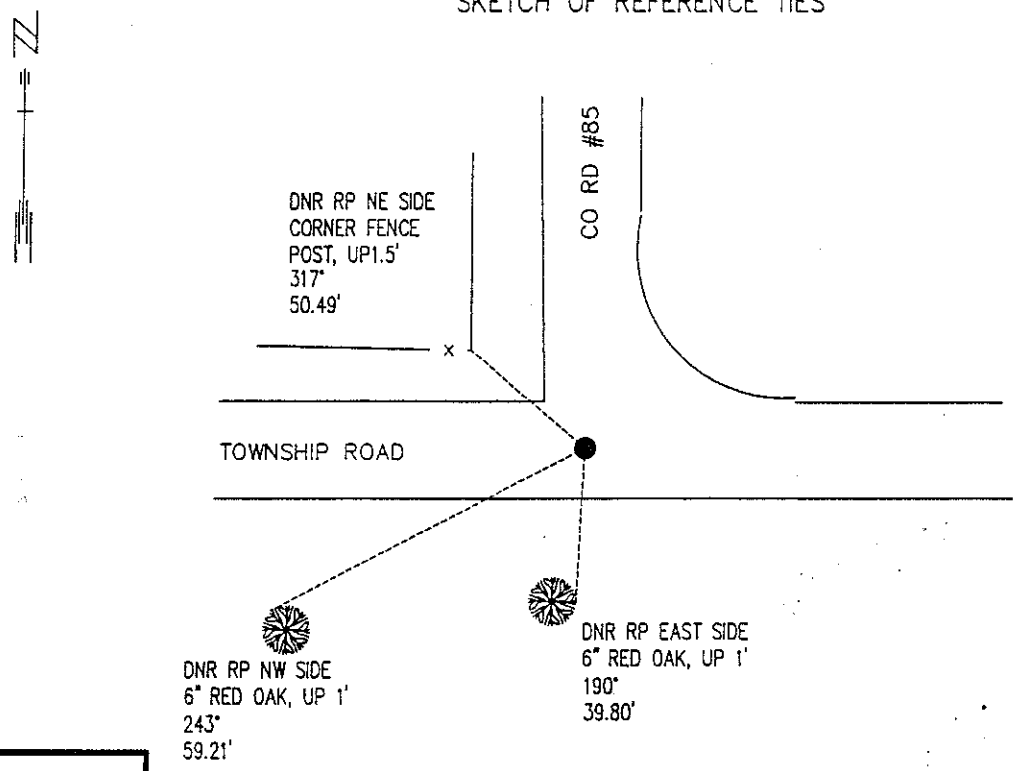
At the corner location shown on the sketch:

■ On 5/18/99 found a 18"x 12"x 10" STONE WITH AN "+" ON TOP WITH A 1 5/8"x 22" IRON PIPE
DATE BELOW THE STONE

left monument as found, lowered monument, removed monument (explain)

■ On 5/18/99 Placed a 3/4" x 13.5" IRON ROD WITH A "MNDNR SURVEY MARKER" CAP (DOWN 0.5')
DATE OVER "+" IN STONE WHICH IS OVER IRON PIPE.

SKETCH OF REFERENCE TIES



KANABEC CO. COORDINATES

N 245620.38
E 444940.62

AZIMUTHS OBSERVED WITH COMPASS

Statement of evidence relative to this corner location is on back of page.

6/99
WMA00271

I hereby certify that this document and the data contained herein was prepared by me or under my direct supervision.

John D. Walker SIGNATURE 6/30/99 DATE

License Number 16098

Land Surveyor, Professional Engineer
 County Surveyor, County Engineer

OFFICE OF THE COUNTY RECORDER
County of _____

I hereby certify that this document was filed in the Co. recorders office at _____ .M. on the _____ day of _____ A.D., 19____

County Recorder _____
By _____, Deputy
DOCUMENT NO. _____

Northeast Corner Section 16, Township 42 North, Range 22 West

The DNR Bureau of Engineering contacted the following for survey information:

Minnesota Secretary of State's Office
 Kanabec County Recorders's Office
 Kanabec County Highway Engineer
 Kanabec County Surveyor
 Bill Hayden, Land Surveyor
 Terrence Johnson, Land Surveyor

1855 U.S. General Land Office notes obtained from the Secretary of State's Office states that a post was set to mark the corner with the following bearing trees marked:

Spruce 6" N 20° W 26 links (17.16 feet)
 Spruce 6" N 49° E 18 links (11.88 feet)
 Spruce 16" S 34° E 44 links (29.04 feet)
 Spruce 7" S 14° W 33 links (21.78 feet)

1909 County Surveyor, John Nelson, surveyed a road through the section corner. Set stake for section corner with the following bearing trees marked:

Pine Stump ? 36" N 18° E 75 links (49.50 feet)
 Pine Stump ? 12" S 58° W 100 links (66.00 feet)

1997 MN DNR Bureau of Engineering searched for the corner at the lost position and found nothing.

1998 MN DNR Bureau of Engineering established this corner at the intersection of roads north, east, west, and fence line south and set a DNR Survey Marker.

1999 In May, the MN DNR Bureau of Engineering used the Kanabec County Engineers backhoe and operator to dig an 8 foot N-S x 14 foot E-W x 3.5 foot deep hole at the corner area. An 18" x 12" x 10" thick stone with a + on top was found. A 1 5/8" x 22" iron pipe was found directly below the stone. Dug 1 foot below the iron pipe but found nothing else. Reset iron pipe at a depth of 2.5 feet and reset stone directly over iron pipe. The stone was accepted as the corner. A DNR Survey Marker was set directly over the stone at a depth of 0.5 feet and ties were taken as shown on the face of this certificate. The stone was about 2' north and 1.8' east of the previously established corner. Measurements to the quarter section corners north and west are:

N01°13'39"W 2639.36 feet
 N89°16'21"W 2635.85 feet

For more information on our survey in this area please contact MN DNR, Bureau of Engineering, Survey Section, 1601 Minnesota Drive, Brainerd, MN 56425