

CERTIFICATE OF LOCATION OF GOVERNMENT CORNER

North Quarter Corner of Section 27, Township 42 North, Range 22 West,
4th Principal Meridian, Kanabec County, State of Minnesota

At the corner location shown on the sketch:
On 7/31/2014 set a 1/2" x 22" Iron Pipe with Aluminum Cap at a lost position.

Kanabec County U.S. Survey Feet Coordinates
NAD 1983, HARN 1996 Adjustment
Obtained by RTK GPS observation
Northing: 235126.5896
Easting: 447526.2536

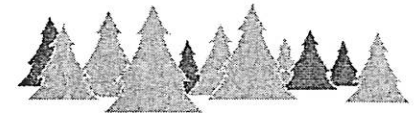
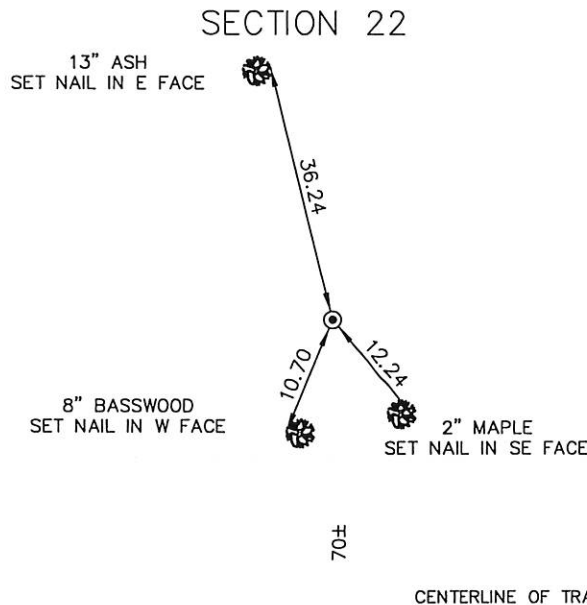
Note: NAD 1983, HARN 1996 Adjustment
coordinates are NOT compatible with
NAD 1983 coordinates
Note: 1 Meter = 3937/1200 U.S. Survey Feet

SKETCH OF REFERENCE TIES

KROSCHEL LAND SURVEYORS, INC.
ASSUMES NO LIABILITY FOR THE ACCURACY
OF THE GPS COORDINATES SHOWN HEREON.
ALL COORDINATES AND DIMENSIONS
SHOULD BE FIELD VERIFIED BY THE USER.

NOT TO SCALE

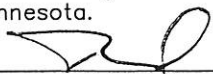
THE BASIS OF BEARINGS FOR THIS
DRAWING IS THE KANABEC COUNTY
COORDINATE SYSTEM BY MNDOT,
NAD 1983, HARN 1996 ADJUSTMENT



Kroschel Land Surveyors, Inc.
1639 Main Street North, Suite 6, Pine City, MN 55063
Phone: 320-629-3267 Fax: 320-629-0176

Statement of evidence relative to this corner location is on back of page.

I hereby certify that this survey, plan, or report was prepared by me or under my direct supervision, that the United States public land survey monument record is correct and complete to the best of my knowledge and belief, and that I am a duly Licensed Land Surveyor under the laws of the State of Minnesota.


Tyler J. Kroschel
License No. 44490
 Land Surveyor County Surveyor
Date 3-3-2015

OFFICE OF THE COUNTY RECORDER
County of Kanabec

I hereby certify that this document was filed in the County Recorder's office at _____ .M. on the _____ day of _____ A.D., 20____
County Recorder _____
By _____, Deputy
DOCUMENT NO. _____

109/71

Statement of Evidence:

In November of 1855, Deputy Surveyor Isaac Banker set a post to mark the North Quarter Corner of Section 27, Township 42 North, Range 22 West, 4th Principal Meridian.

Reference ties were taken to:

12 inch W. Birch at South 36 degrees 30 minutes East a distance of 20 links

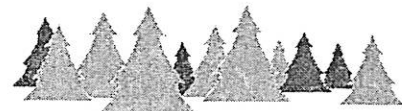
7 inch Sugar Maple at North 13 degrees 30 minutes East a distance of 18 links

All of the original Government corner evidence was searched for. None was found.

There is no resurvey data available for this corner. There are no immediate lines of occupation in this area.

On 7-31-2014, I made a search by checking with a magnetic locator. No evidence of corner was found. I determined the corner lost and set a 1/2" x 22" Iron Pipe with Aluminum Cap on-line and halfway between the Northwest and Northeast corners of Section 27. Established reference ties and assigned Kanabec County Coordinates.

This location was determined to be the best available evidence of the original corner location.



Kroschel Land Surveyors, Inc.

1639 Main Street North, Suite 6, Pine City, MN 55063
Phone: 320-629-3267 Fax: 320-629-0176