

# CERTIFICATE OF LOCATION OF GOVERNMENT CORNER

Northeast Corner of Section 28, Township 42, Range 22, 4th P.M.

STATE OF MINNESOTA, County of KANABEC

At the corner location shown on the sketch:

*Set a 7/8" x 24" rebar with a Kanabec County aluminum cap on top.*

Kanabec County U.S. Survey Feet Coordinates  
NAD 1983, HARN 1996 Adjustment  
Obtained by RTK GPS Observation

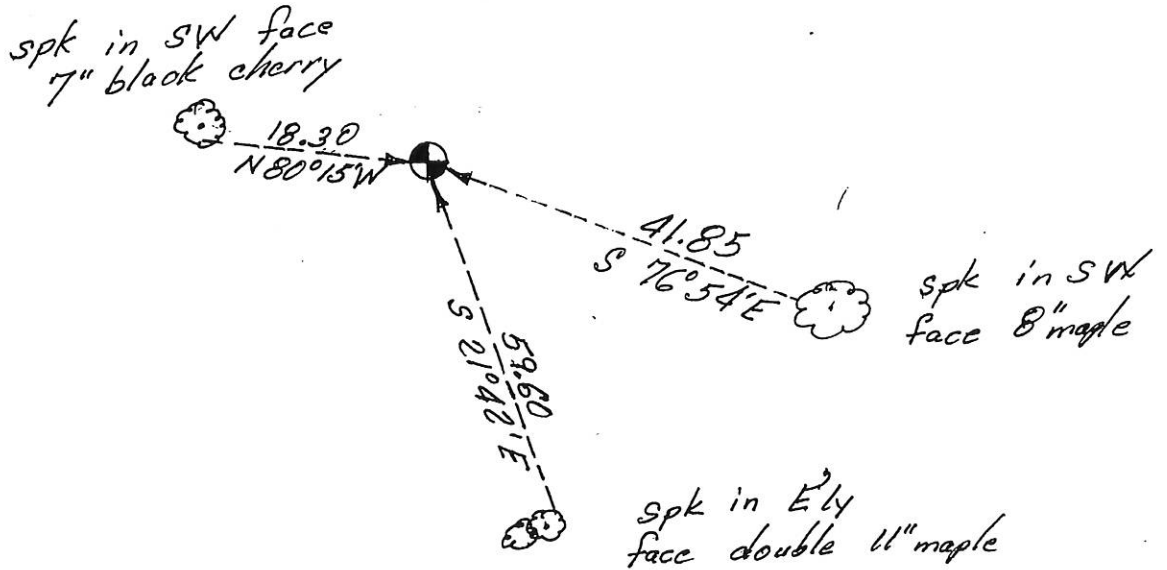
Northing= 235125.84

Easting= 444899.85

Note: NAD 1983, HARN 1996 Adjustment coordinates are NOT compatible with NAD 1983 coordinates

Note: 1 Meter=3937/1200 U.S. Survey Feet

## SKETCH OF REFERENCE TIES



Statement of evidence relative to this corner location is on back of page.

I hereby certify that this document and the data contained herein was prepared by me or under my direct supervision.

Ernest L. Bud  
Signature

April 28, 2014  
Date

Registration No. 9808

Land Surveyor,  Professional Engineer

County Surveyor,  County Engineer

## OFFICE OF THE COUNTY RECORDER

County of \_\_\_\_\_

I hereby certify that this document was filed in the County Recorder's office at \_\_\_\_\_ M. on the

\_\_\_\_\_ day of \_\_\_\_\_ A.D., 20\_\_

County Recorder \_\_\_\_\_

BY \_\_\_\_\_ Deputy

DOCUMENT NO. \_\_\_\_\_

The original Government post was set by U.S. Deputy Surveyor Silas Banker on November 20, 1855 and 4 bearing trees noted as being;

10" Balsam bearing North 61° West at 30 Links

12" White Birch bearing North 29° East at 10 Links

9" Balsam bearing South 67° 45' East at 25 Links

10" White Birch bearing South 19° West at 6 Links

No evidence for the post or bearing trees could be found.

This corner falls in a heavily wooded area with no immediate lines of occupation. No records of any subsequent surveys were found at Kanabec County Offices.

Therefore we treated this corner as being lost and set it by double proportion between the northeast corner of Section 29 and the northeast corner of Section 27; and between the northeast corner of Section 28 to the northeast corner of Section 16.

A 7/8" x 24" rebar with an aluminum cap was set, ties taken and Kanabec County Coordinates established on this position.