

4222082

Index No. 0824222

# CERTIFICATE OF LOCATION OF GOVERNMENT CORNER

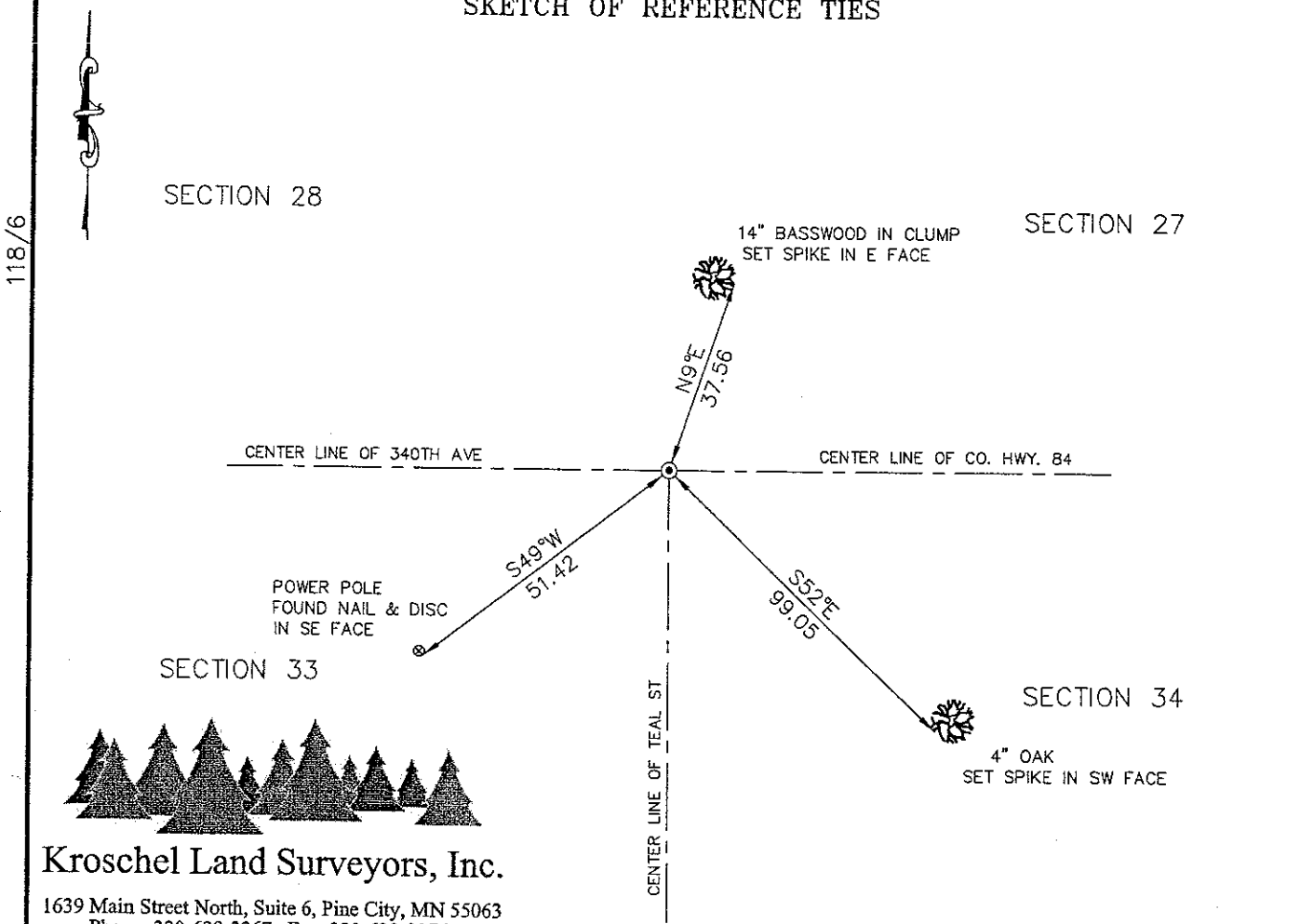
Northeast Corner of Section 33, Township 42, Range 22,  
4th Principal Meridian, Kanabec County, State of Minnesota

At the corner location shown on the sketch:  
On 6/1/2009 found a 3/4" Capped Rebar  
Monument per Certificate on File.

Kanabec County U.S. Survey Feet Coordinates  
NAD 1983, HARN 1996 Adjustment  
Obtained by RTK GPS observation  
Northing: 229878.5552  
Easting: 444871.3136

Note: NAD 1983, HARN 1996 Adjustment  
coordinates are NOT compatible with  
NAD 1983 coordinates  
Note: 1 Meter = 3937/1200 U.S. Survey Feet

## SKETCH OF REFERENCE TIES



118/6

**Kroschel Land Surveyors, Inc.**  
1639 Main Street North, Suite 6, Pine City, MN 55063  
Phone: 320-629-3267 Fax: 320-629-0176

Statement of evidence relative to this corner location is on back of page.

I hereby certify that this document and the data contained herein was prepared by me or under my direct supervision.

Tyler J. Kroschel      6-30-2009  
Tyler J. Kroschel      Date

License No. 44490

- Land Surveyor       Professional Engineer
- County Surveyor       County Engineer

**OFFICE OF THE COUNTY RECORDER**  
County of Kanabec

I hereby certify that this document was filed in the County Recorders office at \_\_\_\_\_ .M. on the \_\_\_\_\_ day of \_\_\_\_\_ A.D., 20\_\_\_\_

County Recorder \_\_\_\_\_  
By \_\_\_\_\_, Deputy

DOCUMENT NO. \_\_\_\_\_

SSSSSSSS

Statement of Evidence:

Reference previous Certificate on File by John Walker, RLS 16098, dated 3/22/1997 for complete history.

In June 2009, a survey was made around Section 26, Township 42 North, Range 22 West, 4th Principal Meridian for Mark Hickle to locate existing monuments, lines of occupation and establish search areas.

On June 1, 2009, we found a 3/4" Capped Rebar per Certificate on file. We searched for Mr. Walker's ties, but only one was found. Established additional reference ties and assigned Kanabec County Coordinates.