

CERTIFICATE OF LOCATION OF GOVERNMENT CORNER

EAST QUARTER Corner of Section 33, Township 42, Range 22, 4TH P.M.

STATE OF MINNESOTA, County of KANABEC

At the corner location shown on the sketch:
FOUND 3/4" BY 24" REBAR WITH ALUMINUM CAP STAMPED
"DNR SURVEY MARKER" DOWN 0.6 FT. IN CENTERLINE OF
TEAL AVENUE AND IN LINE WITH FENCE RUNNING WEST

Kanabec County U.S. Survey Feet Coordinates
NAD 1983, HARN 1996 Adjustment
Obtained by RTK GPS Observation

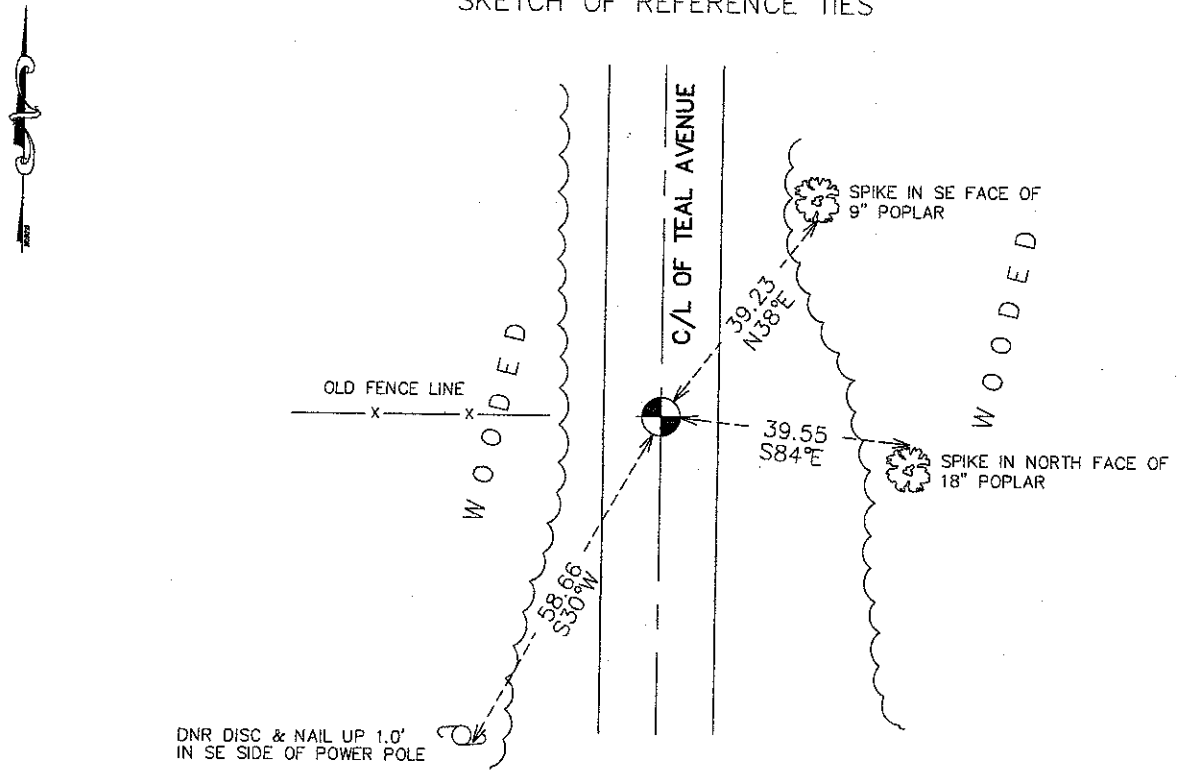
Northing= 227247.19

Easting= 444824.87

Note: NAD 1983, HARN 1996 Adjustment
coordinates are NOT compatible with
NAD 1983 coordinates

Note: 1 Meter=3937/1200 U.S. Survey Feet

SKETCH OF REFERENCE TIES



Statement of evidence relative to this corner location is on back of page.

I hereby certify that this document and the data contained herein was prepared by me or under my direct supervision.

Ernest Reed
Signature

11-27-10
Date

Registration No. 9808

- Land Surveyor, [] Professional Engineer
- [] County Surveyor, [] County Engineer

OFFICE OF THE COUNTY RECORDER

County of _____

I hereby certify that this document was filed in the County Recorder's office at _____ M. on the

_____ day of _____ A.D., 20____

County Recorder _____

BY _____ Deputy

DOCUMENT NO. _____

E1/4 CORNER, SEC. 33, T42, R22

STATEMENT OF EVIDENCE

THE DEPT. OF NATURAL RESOURCES, BUREAU OF ENGINEERING (BOE) MADE THE FOLLOWING CONTACTS FOR INFORMATION CONCERNING THIS CORNER:

**MINNESOTA SECRETARY OF STATES OFFICE
COUNTY AUDITOR, ENGINEER, RECORDER AND SURVEYOR**

1855 THE U.S. GENERAL LAND OFFICE SET A POST TO MARK THIS CORNER AND THE FOLLOWING BEARING TREES WERE MARKED:

**20" WHITE BIRCH @ 20 LINKS BEARING S72°45'W
14" BALSAM @ 10 LINKS BEARING N27°E**

1995 THE BOE HIRED THE COUNTY HIGHWAY DEPT. TO DIG FOR THIS CORNER. A 12' x 12' HOLE WAS DUG TO A DEPTH OF 4' CENTERED ON THE CENTERLINE OF A NORTH-SOUTH TOWNSHIP ROAD AND AN OLD DOWN FENCE WEST. NOTHING WAS FOUND. A DNR SURVEY MARKER WAS SET AT THE OBLITERATED POSITION FOR THE CORNER IN THE CENTERLINE OF THE NORTH-SOUTH TOWNSHIP ROAD AND IN LINE WITH THE OLD DOWN FENCE WEST. THIS CORNER IS 2631.58' FROM THE NE CORNER OF SEC. 33 AND 2640.29' FROM THE SE CORNER.

FOR INFORMATION REGARDING THIS SURVEY, CONTACT THE MN DEPARTMENT OF NATURAL RESOURCES, BUREAU OF ENGINEERING, SURVEY SECTION, 500 LAFAYETTE ROAD, ST. PAUL, MN 55155-4029.

IN APRIL 2010, E.G. RUD AND SONS, INC. FOUND THIS DNR SURVEY MARKER, CHECKED THE REMAINING TIES, TOOK NEW TIES AND KANABEC COUNTY COORDINATES WERE ESTABLISHED ON THIS POSITION.