

CERTIFICATE OF LOCATION OF GOVERNMENT CORNER

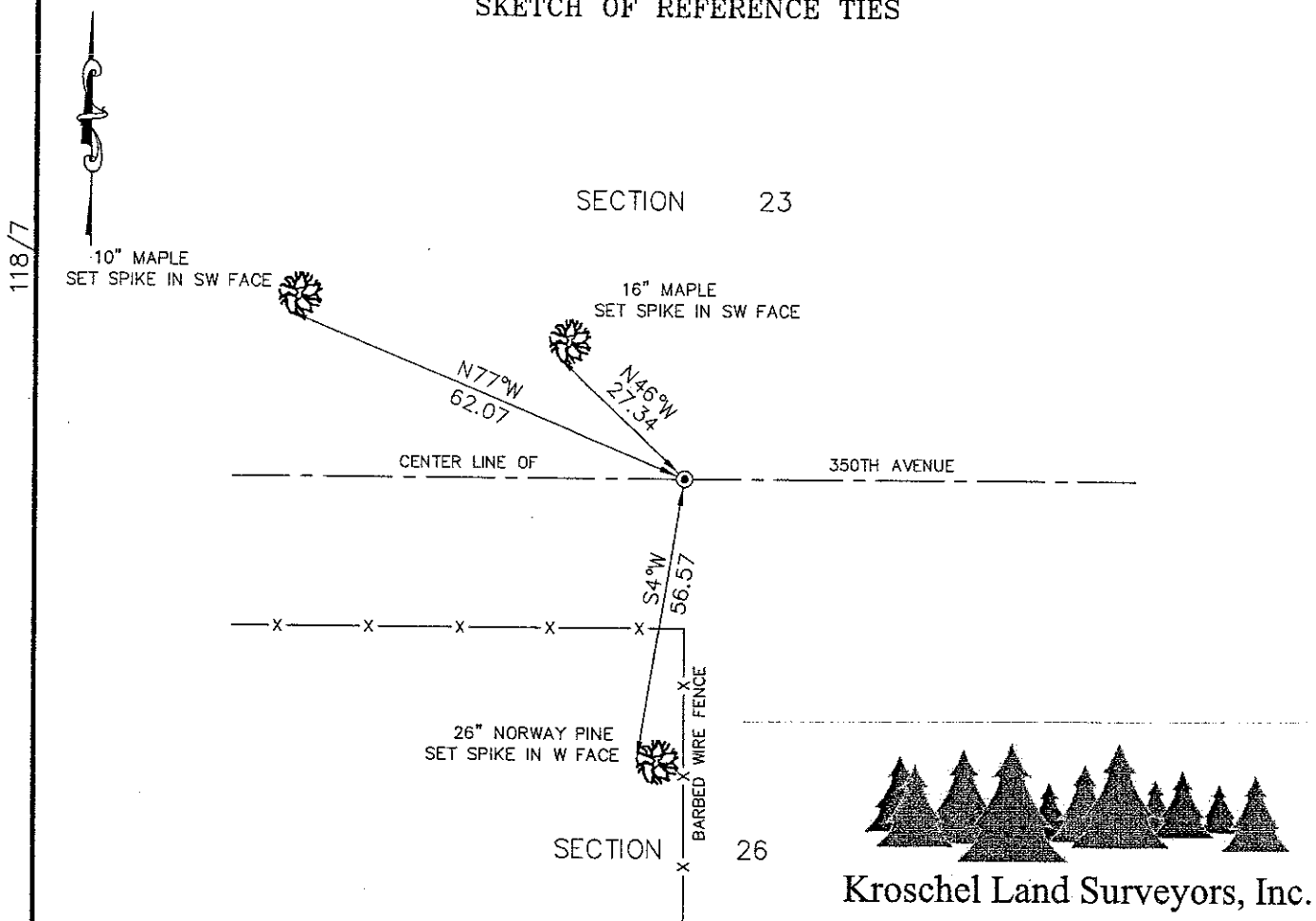
North Quarter Corner of Section 26, Township 42, Range 22,
4th Principal Meridian, Kanabec County, State of Minnesota

At the corner location shown on the sketch:
On 6/11/2009 set a 7/8" x 24" Rebar Monument
with Aluminum Cap.

Kanabec County U.S. Survey Feet Coordinates
NAD 1983, HARN 1996 Adjustment
Obtained by RTK GPS observation
Northing: 235088.9640
Easting: 452814.0205

Note: NAD 1983, HARN 1996 Adjustment
coordinates are NOT compatible with
NAD 1983 coordinates
Note: 1 Meter = 3937/1200 U.S. Survey Feet

SKETCH OF REFERENCE TIES



Statement of evidence relative to this corner location is on back of page.

I hereby certify that this document and
the data contained herein was prepared
by me or under my direct supervision.

Tyler J. Kroschel 6-30-2009
Tyler J. Kroschel Date

License No. 44490

- Land Surveyor Professional Engineer
- County Surveyor County Engineer

OFFICE OF THE COUNTY RECORDER
County of Kanabec

I hereby certify that this document was filed in the
County Recorders office at _____ .M. on the
_____ day of _____ A.D., 20____

County Recorder _____
By _____, Deputy

DOCUMENT NO. _____

Statement of Evidence:

In November of 1855, Deputy Surveyor Isaac Banker set a post to mark the North Quarter Corner of Section 26, Township 42 North, Range 22 West, 4th Principal Meridian.

Reference ties were taken to:

5 inch Tamarack at SOUTH a distance of 22 links

7 inch Tamarack at North 23 degrees 15 minutes West a distance of 5 links

All of the original Government corner evidence was searched for. None was found.

There is no resurvey information available for this corner.

On 6/7/1915 a Township Supervisor's Road Order was filed in the Office of the County Auditor opening a Township road along the north line of Section 26. There is no survey attached to the road order.

In June 2009, a survey was made around Section 26, Township 42 North, Range 22 West, 4th Principal Meridian for Mark Hickle to locate existing monuments, lines of occupation and establish search areas.

On June 3, 2009, we made a 10' x 15' x 2' deep excavation with Marvin Rostberg's Bobcat. The excavation was centered at the intersection of the township road and a fence line south. No evidence was found in the excavation.

On June 11, 2009 set a 7/8" x 24" Rebar Monument with Aluminum Cap at the intersection of the centerline of the township road and fence line south extended north. This location is determined to be the best available evidence of the original corner location. Established reference ties and assigned Kanabec County Coordinates.