

CERTIFICATE OF LOCATION OF GOVERNMENT CORNER

Northeast Corner of Section 27, Township 42, Range 22,
4th Principal Meridian, Kanabec County, State of Minnesota

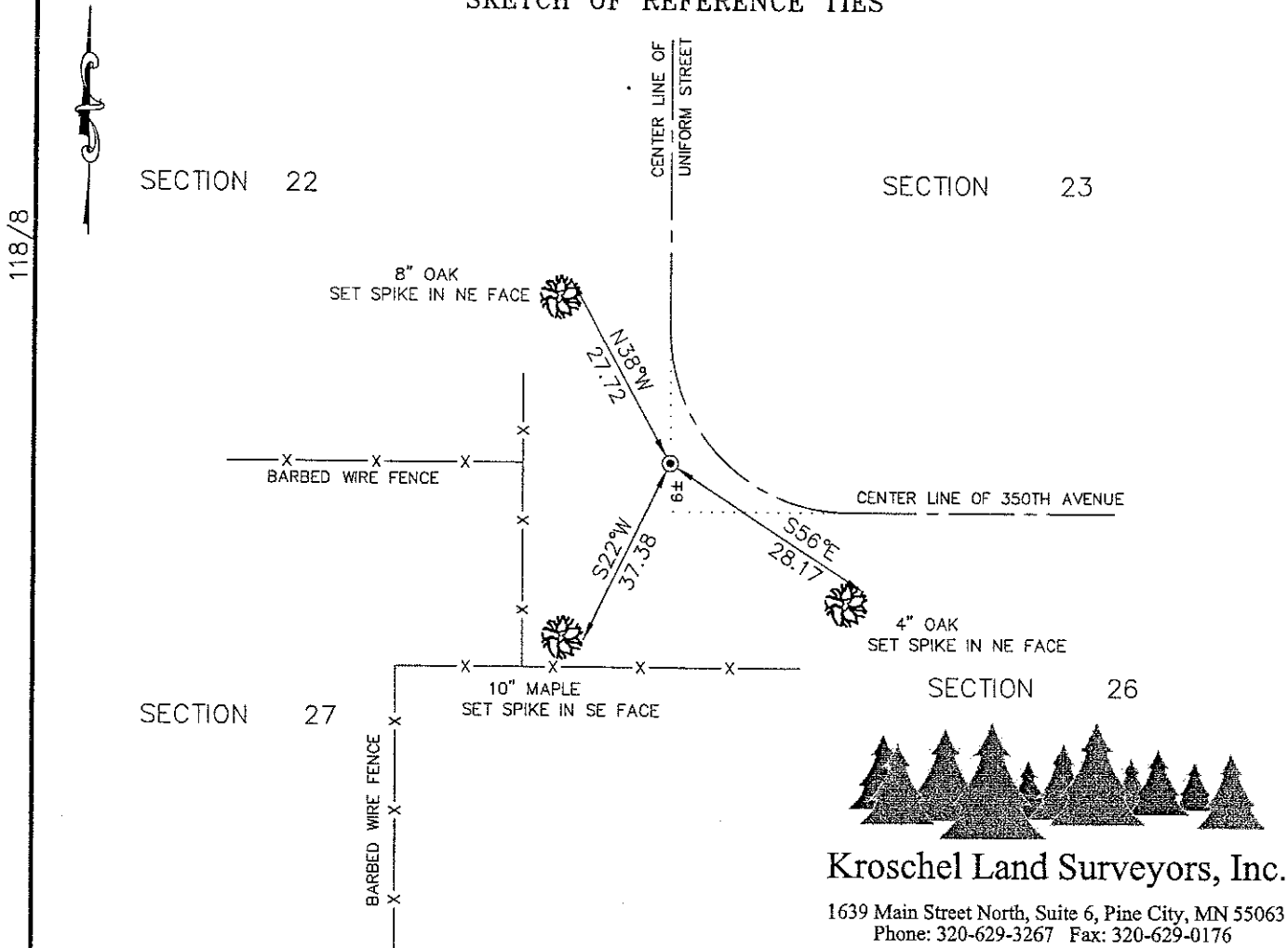
At the corner location shown on the sketch:
On 6/15/2009 set a 7/8" x 24" Rebar Monument
with Aluminum Cap.

Kanabec County U.S. Survey Feet Coordinates
NAD 1983, HARN 1996 Adjustment
Obtained by RTK GPS observation
Northing: 235127.3718
Easting: 450152.6180

Note: NAD 1983, HARN 1996 Adjustment
coordinates are NOT compatible with
NAD 1983 coordinates

Note: 1 Meter = 3937/1200 U.S. Survey Feet

SKETCH OF REFERENCE TIES



Kroschel Land Surveyors, Inc.

1639 Main Street North, Suite 6, Pine City, MN 55063
Phone: 320-629-3267 Fax: 320-629-0176

Statement of evidence relative to this corner location is on back of page.

I hereby certify that this document and the data contained herein was prepared by me or under my direct supervision.

Tyler J. Kroschel 6-30-2009

Tyler J. Kroschel Date

License No. 444490

- Land Surveyor Professional Engineer
- County Surveyor County Engineer

OFFICE OF THE COUNTY RECORDER
County of Kanabec

I hereby certify that this document was filed in the
County Recorders office at _____ M. on the
_____ day of _____ A.D., 20____

County Recorder _____
By _____, Deputy

DOCUMENT NO. _____

Statement of Evidence:

In November of 1855, Deputy Surveyor Isaac Banker set a post to mark the Northeast Corner of Section 27, Township 42 North, Range 22 West, 4th Principal Meridian.

Reference ties were taken to:

- 12 inch White Birch at South 42 degrees East a distance of 58 links
- 12 inch Yellow Birch at South 22 degrees West a distance of 44 links
- 10 inch White Birch at North 79 degrees East a distance of 22 links
- 6 inch White Birch at North 37 degrees 30 minutes West a distance of 26 links

All of the original Government corner evidence was searched for. None was found.

On 6/7/1915 a Township Supervisor's Road Order was filed in the Office of the County Auditor opening a Township road along the north line of Section 26. There is no survey attached to the road order.

On 11/12/1918, a Township Supervisor's Road Order was filed in the Office of the County Auditor opening a Township road along the East line of Sections 22 and 27. There is a map of the road but no survey information is shown.

On 11/4/1919 County Surveyor George Jenks found an old stake and replaced it with a stone marked "x" according to his corner certificate filed on 3/21/1925. Ties were taken to a blazed Pine stump Southeast 30.4 feet and a blazed Pine stump Southwest 59.0 feet.

In June 2009, a survey was made around Section 26, Township 42 North, Range 22 West, 4th Principal Meridian for Mark Hickle to locate existing monuments, lines of occupation and establish search areas.

On June 3, 2009, we made 3 excavations with Marvin Rostberg's Bobcat. The first was 6' x 7' x 1' deep near the fence corner on the west side of the road. The second excavation was 15' x 15' x 1' deep and centered at the center line intersection of the township road and a fence line west. The third excavation was 15' x 15' x 1' deep and centered at the center line of the township road east and Government distance from the northeast corner of Section 26. No evidence was found in any excavation.

On June 15, 2009 set a 7/8" x 24" Rebar Monument with Aluminum Cap at the intersection of the centerline of the township road north extended south and fence line west extended east. This location is determined to be the best available evidence of the original corner location. Established reference ties and assigned Kanabec County Coordinates.