

CERTIFICATE OF LOCATION OF GOVERNMENT CORNER

East Quarter Corner of Section 27, Township 42, Range 22,
4th Principal Meridian, Kanabec County, State of Minnesota

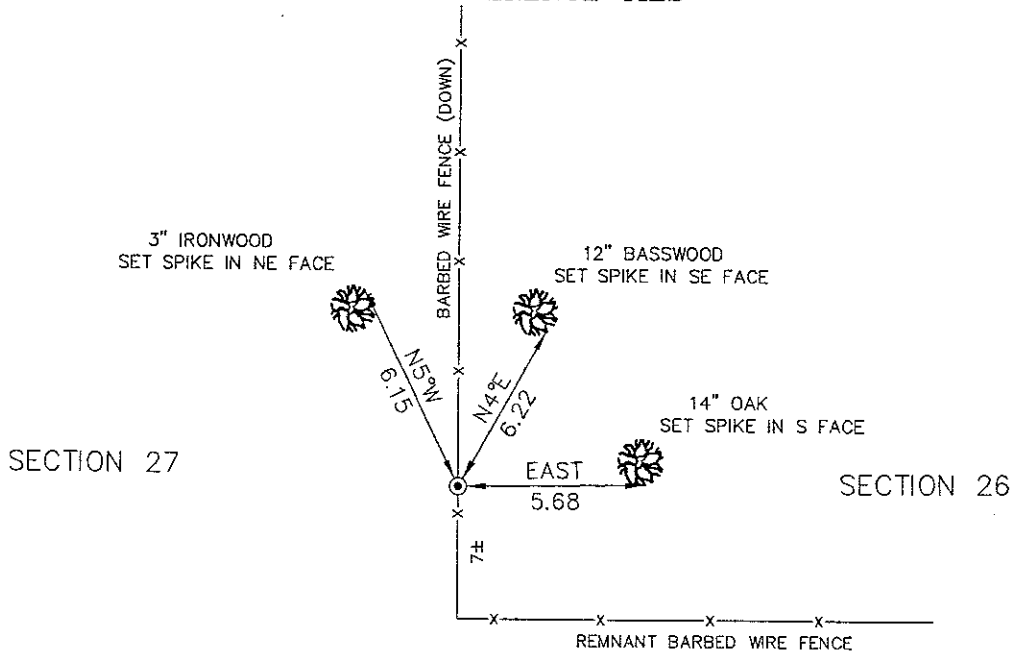
At the corner location shown on the sketch:
On 6/5/2009 set a 7/8" x 24" Rebar Monument
with Aluminum Cap in place of a 7" x 12" x 14"
Sandstone Monument with cross mark.

Kanabec County U.S. Survey Feet Coordinates
NAD 1983, HARN 1996 Adjustment
Obtained by RTK GPS observation
Northing: 232477.2846
Easting: 450063.8374

Note: NAD 1983, HARN 1996 Adjustment
coordinates are NOT compatible with
NAD 1983 coordinates
Note: 1 Meter = 3937/1200 U.S. Survey Feet

SKETCH OF REFERENCE TIES

118/6



Kroschel Land Surveyors, Inc.

1639 Main Street North, Suite 6, Pine City, MN 55063
Phone: 320-629-3267 Fax: 320-629-0176

Statement of evidence relative to this corner location is on back of page.

I hereby certify that this document and
the data contained herein was prepared
by me or under my direct supervision.

Tyler J. Kroschel

6-30-2009
Date

License No. 44490

- Land Surveyor
- Professional Engineer
- County Surveyor
- County Engineer

OFFICE OF THE COUNTY RECORDER County of Kanabec

I hereby certify that this document was filed in the
County Recorders office at _____ .M. on the
_____ day of _____ A.D., 20____

County Recorder _____
By _____, Deputy

DOCUMENT NO. _____

Statement of Evidence:

In November of 1855, Deputy Surveyor Isaac Banker set a post to mark the East Quarter Corner of Section 27, Township 42 North, Range 22 West, 4th Principal Meridian.

Reference ties were taken to:

12 inch ASPEN at South 14 degrees West a distance of 6 links

10 inch ASPEN at North 50 degrees East a distance of 12 links

All of the original Government corner evidence was searched for. None was found.

There is no resurvey data available for this corner.

On 11/12/1918, a Township Supervisor's Road Order was filed in the Office of the County Auditor opening a Township road along the West line of Section 26. There is a map of the road but no survey information is shown. It does not appear that a road was ever built along this line.

In June 2009, a survey was made around Section 26, Township 42 North, Range 22 West, 4th Principal Meridian for Mark Hickle to locate existing monuments, lines of occupation and establish search areas.

On June 5, 2009, a search was made by probing with machetes and checking with a magnetic locator. Approximately 7 feet north of an old fence corner we found a 7" x 12" x 14" Sandstone Monument with cross mark. We removed the Sandstone and replaced it with a 7/8" x 24" Rebar Monument with Aluminum Cap.

The found Sandstone is determined to be the best available evidence of the original corner monument location.

Established reference ties and assigned Kanabec County Coordinates. No excavation was made at the corner location.