

CERTIFICATE OF LOCATION OF GOVERNMENT CORNER

EAST QUARTER Corner of Section 34, Township 42, Range 22, 4TH P.M.

STATE OF MINNESOTA, County of KANABEC

At the corner location shown on the sketch:
2/1/2010: SET A KANABEC COUNTY MONUMENT

Kanabec County U.S. Survey Feet Coordinates
NAD 1983, HARN 1996 Adjustment
Obtained by RTK GPS Observation

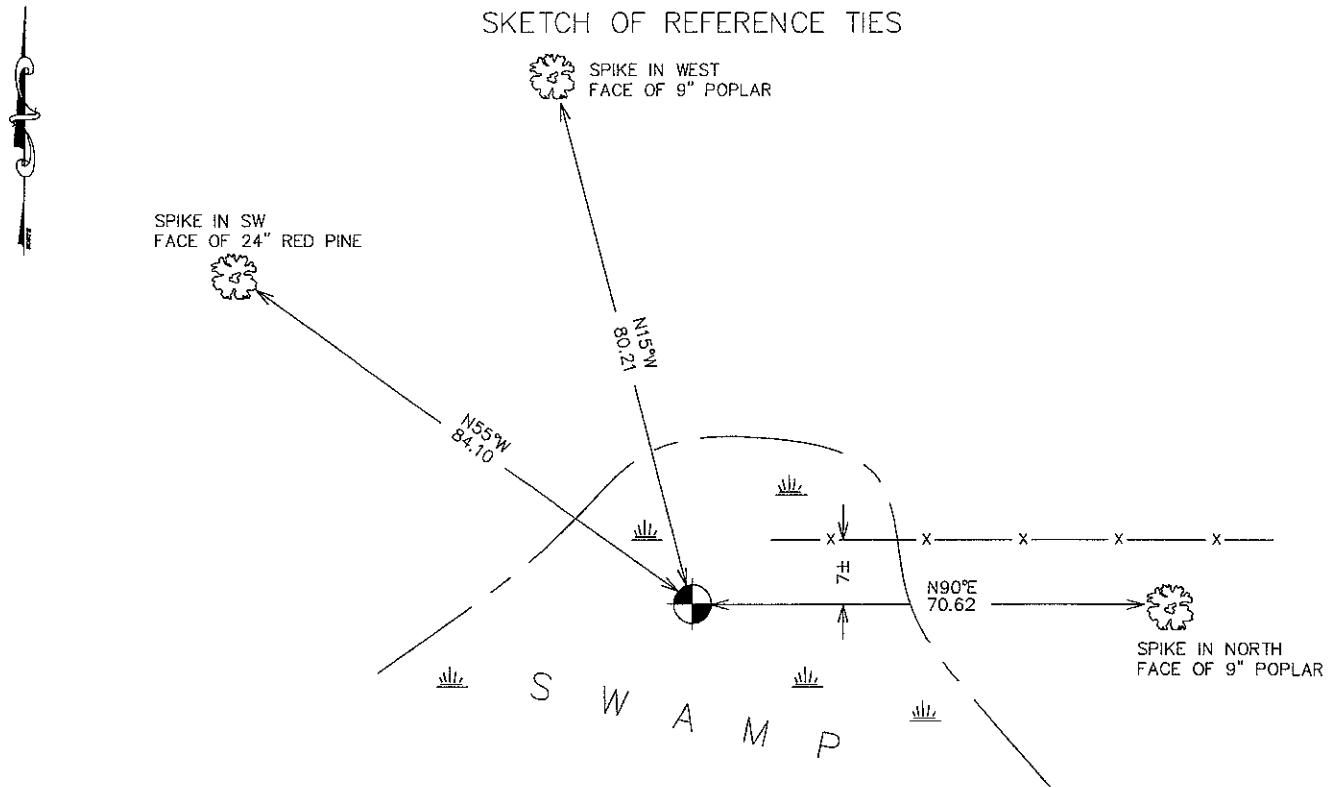
Northing= 227195.53

Easting= 450035.63

Note: NAD 1983, HARN 1996 Adjustment
coordinates are NOT compatible with
NAD 1983 coordinates

Note: 1 Meter=3937/1200 U.S. Survey Feet

SKETCH OF REFERENCE TIES



Statement of evidence relative to this corner location is on back of page.

I hereby certify that this document and the data contained herein was prepared by me or under my direct supervision.

Ernest Blund 2-02-2010
Signature Date

Registration No. 9808

Land Surveyor, Professional Engineer

County Surveyor, County Engineer

OFFICE OF THE COUNTY RECORDER

County of _____

I hereby certify that this document was filed in the County Recorder's office at _____ M. on the

_____ day of _____ A.D., 20 _____

County Recorder _____

BY _____ Deputy

DOCUMENT NO. _____

E 1/4 CORNER, SEC. 34, T42, R22

STATEMENT OF EVIDENCE

THE ORIGINAL GOVERNMENT POST WAS SET BY DEPUTY SURVEYOR ISAAC BANKER IN NOVEMBER 1855 AND 2 BEARING TREES WERE NOTED:

8" TAMARACK, S64°E @ 64 LINKS

8" TAMARACK, N81°30'W @ 22 LINKS

NO VISIBLE EVIDENCE REMAINS FOR THE ORIGINAL POST OR BEARING TREES.

NO RECORDS OF ANY SUBSEQUENT SURVEYS ALONG THIS LINE COULD BE FOUND AT THE KANABEC COUNTY OFFICES.

IN FEBRUARY E.G. RUD AND SONS DID A SURVEY AROUND THIS SECTION TO TO A SURVEY FOR DON BANKS IN THE SE 1/4 OF SEC. 35.

THIS CORNER FALLS IN A SWAMP AND 1± CHAIN SOUTH OF THE NORTHERN EDGE OF SWAMP AS NOTED IN G.L.O. NOTES. A LOST POSITION FALLS 7± FEET SOUTH OF OLD FENCE REMNANTS GOING EAST AND ON THE SOUTHERLY EXTENSION OF TOWNSHIP ROAD RUNNING NORTH.

ON FEBRUARY 1, 2010 E.G. RUD AND SONS SET A KANABEC COUNTY MONUMENT ON A LINE AND EQUIDISTANT FROM THE NE TO THE SE CORNER OF SEC. 34. TIES WERE TAKEN AND KANABEC COUNTY COORDINATES ESTABLISHED ON THIS MONUMENT.