

CERTIFICATE OF LOCATION OF GOVERNMENT CORNER

E 1/4 Corner of Section 2, Township 42, Range 22, 4TH P.M.
STATE OF MINNESOTA, County of KANABEC

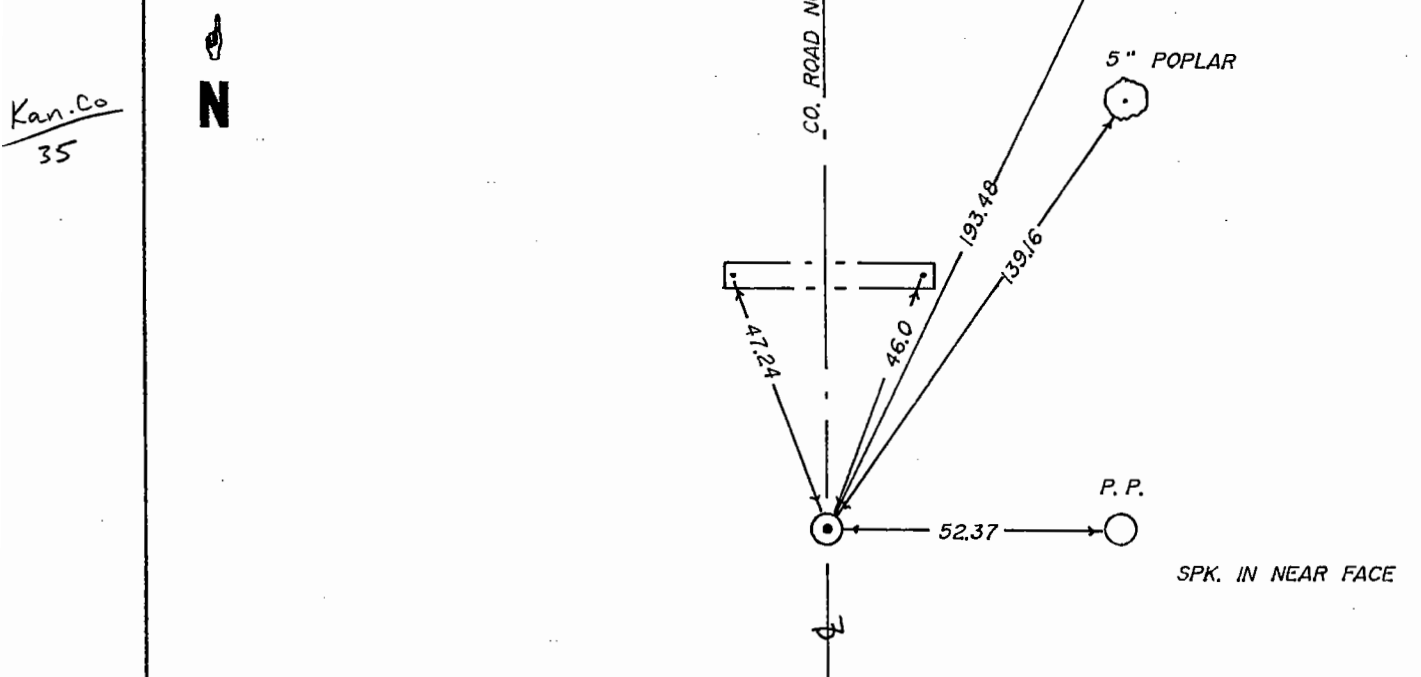
At the corner location shown on the sketch

On 9-12-94 found a PLASTIC CAPPED 3/8" REBAR MARKED
Date
R.L.S. NO. 13115

left monument as found, lowered monument, removed monument (explain)

On 10-4-94 placed a 7/8" x 24" CAPPED REBAR
Date

SKETCH OF REFERENCE TIES



Statement of evidence relative to this corner location is on back of page.

I hereby certify that this document and the data contained herein was prepared by me or under my direct supervision.

[Signature] 11-18-94
Signature Date

Registration No. 8195

Land Surveyor, Professional Engineer

County Surveyor, County Engineer

OFFICE OF THE COUNTY RECORDER

County of _____

I hereby certify that this document was filed in the County Recorder's office at _____ M. on the _____ day of _____ A.D., 19 _____

County Recorder _____

By _____ Deputy

DOCUMENT NO. _____

STATEMENT OF EVIDENCE

All of the original government bearing trees are now gone.

In 1909, the former county surveyor, John Nelson, did a survey for a town road order and found the government corner post.

In 1985, Terry Johnson, a Registered Land Surveyor, set this corner in a survey in Section 2.

in September of 1994, we made a survey around Section 1, Township 42, Range 22 to locate existing monuments, lines of occupation and to establish search areas. We found a 3/8" rebar set by Terry Johnson at this corner.

On September 29, 1994, we made a 6' by 15' by 15' excavation with a backhoe. No additional evidence of the original corner was found in the excavation.

The location of Terry Johnson's corner is in harmony with the survey records from John Nelson the County Surveyor in 1909, and was accepted as the perpetuated location of this corner.