

CERTIFICATE OF LOCATION OF GOVERNMENT CORNER

N 1/4 Corner of Section 12, Township 42, Range 22, 4TH P.M.
STATE OF MINNESOTA, County of KANABEC

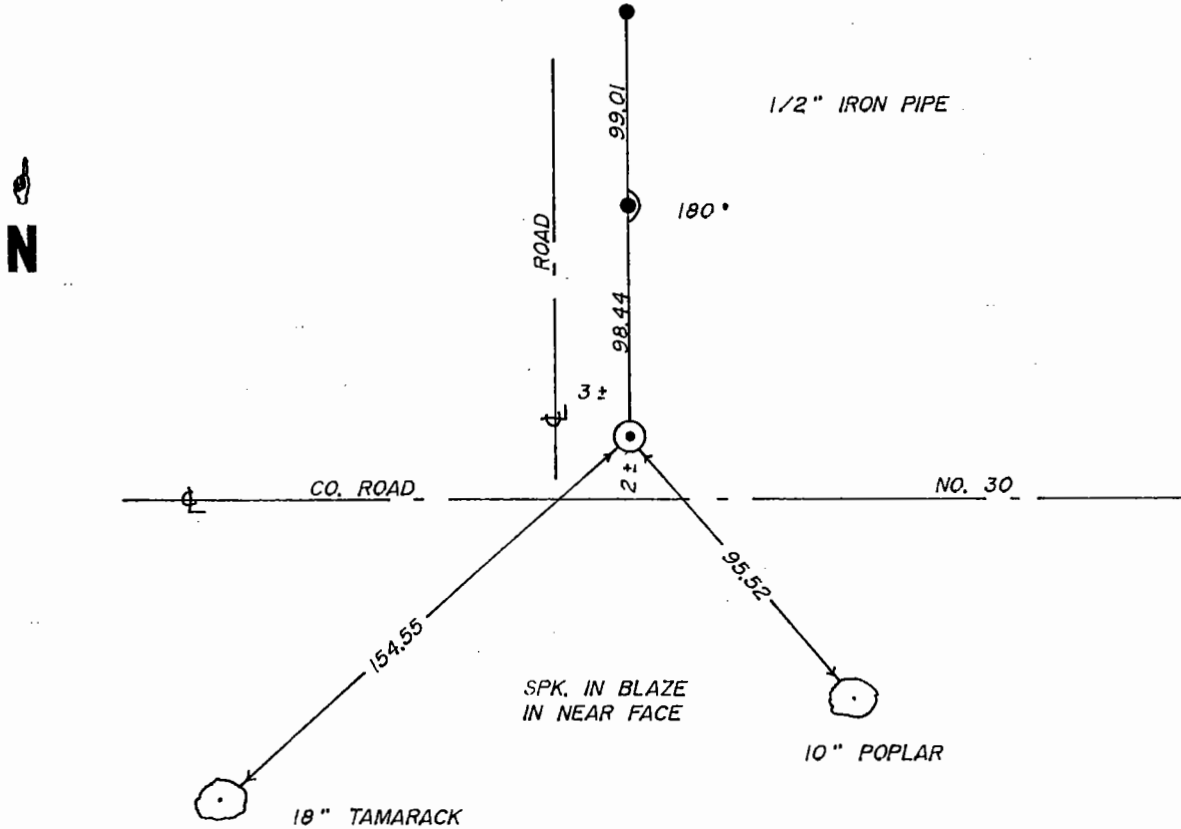
At the corner location shown on the sketch

On _____ found a _____
Date

left monument as found, lowered monument, removed monument (explain)

On 10 - 5 - 94 placed a 7/8" x 24" CAPPED REBAR
Date

SKETCH OF REFERENCE TIES



Kan. Co.
35

Statement of evidence relative to this corner location is on back of page.

I hereby certify that this document and the data contained herein was prepared by me or under my direct supervision.

[Signature] 11-18-94
Signature Date

Registration No. 8195

Land Surveyor, Professional Engineer

County Surveyor, County Engineer

OFFICE OF THE COUNTY RECORDER

County of _____

I hereby certify that this document was filed in the County Recorder's office at _____ M. on the

_____ day of _____ A.D., 19 _____

County Recorder _____

By _____ Deputy

DOCUMENT NO. _____

STATEMENT OF EVIDENCE

All of the original government bearing trees are now gone.

Two town road orders dated in 1904 calls for a town road along the north line of Section 12 and in 1908, a town road order for a town road to start at the south quarter corner of Section 1 and to run north on the east quarter line, per the records at the County Auditor's Office.

In September of 1994, we made a survey around Section 1, Township 42, Range 22, to locate existing monuments, lines of occupation and to establish search areas. This corner falls at the intersection of roads east-west and north.

On September 29, 1994, we made a 3' by 15' by 15' excavation with a backhoe and found no evidence of the corner in the excavation.

We set this ^{corner} on line and proportional measurements between the northeast and northwest corners of Section 12. This location is in harmony with the town road orders of file.