

CERTIFICATE OF LOCATION OF GOVERNMENT CORNER

E 1/4 Corner of Section 11, Township 42, Range 22, 4TH P.M.
STATE OF MINNESOTA, County of KANABEC

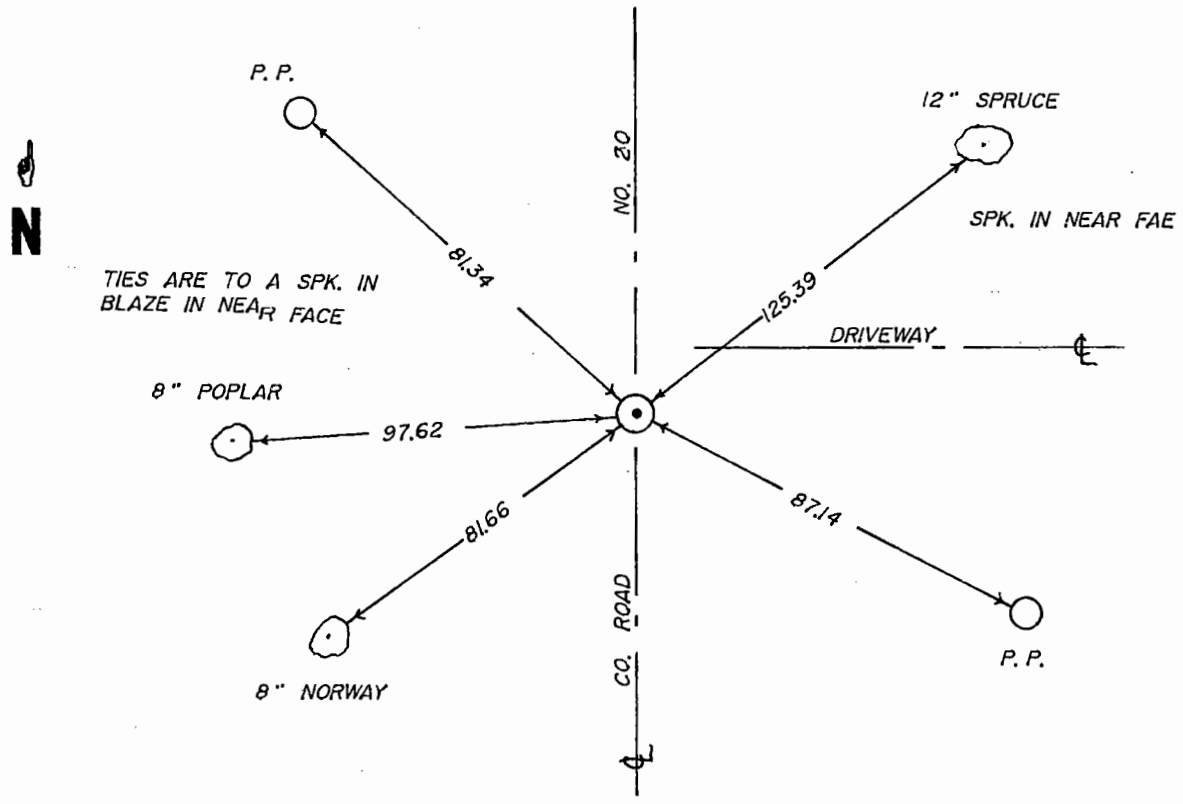
At the corner location shown on the sketch

On 9-12-94 found a 1/2" IRON PIPE
Date

left monument as found, lowered monument, removed monument (explain)

On 10-5-94 placed a 7/8" x 24" CAPPED REBAR
Date

SKETCH OF REFERENCE TIES



Kan. Co
37

Statement of evidence relative to this corner location is on back of page.

I hereby certify that this document and the data contained herein was prepared by me or under my direct supervision.

[Signature] 11-18-94
Signature Date

Registration No. 8195

Land Surveyor, Professional Engineer
 County Surveyor, County Engineer

OFFICE OF THE COUNTY RECORDER

County of _____

I hereby certify that this document was filed in the County Recorder's office at _____ M. on the _____ day of _____ A.D., 19 _____

County Recorder _____

By _____ Deputy

DOCUMENT NO. _____

STATEMENT OF EVIDENCE

All of the original government bearing trees are now gone.

was

This corner/reestablished by Newbert W. Swanson, a Registered Land Surveyor, in a survey for the plat of DEEPHAVEN in 1961 and used by him in the plat of POINT ELEVEN in 1970.

In 1982, I looked for this corner and found Neubert W. Swanson's monument has been destroyed. I set a $\frac{1}{2}$ " iron pipe at this corner from monuments and survey records in the plat of POINT ELEVEN.

On September 12, 1994, we found the $\frac{1}{2}$ " iron pipe set in 1982 to replace Swanson's monument and replaced the $\frac{1}{2}$ " iron pipe with a capped $\frac{7}{8}$ " by 24" rebar and made new reference ties.