

CERTIFICATE OF LOCATION OF GOVERNMENT CORNER

North Quarter Corner of Section 13, Township 42 North, Range 22 West,
4th Principal Meridian, Kanabec County, State of Minnesota

At the corner location shown on the sketch:

On 7/19/2017 set a 7/8" x 36" rebar with Aluminum Cap
at a lost position.

Kanabec County U.S. Survey Feet Coordinates
NAD 1983, HARN 1996 Adjustment
Obtained by RTK GPS observation
Northing: 245557.6429
Easting: 458252.4808

Note: NAD 1983, HARN 1996 Adjustment
coordinates are NOT compatible with
NAD 1983 coordinates

Note: 1 Meter = 3937/1200 U.S. Survey Feet

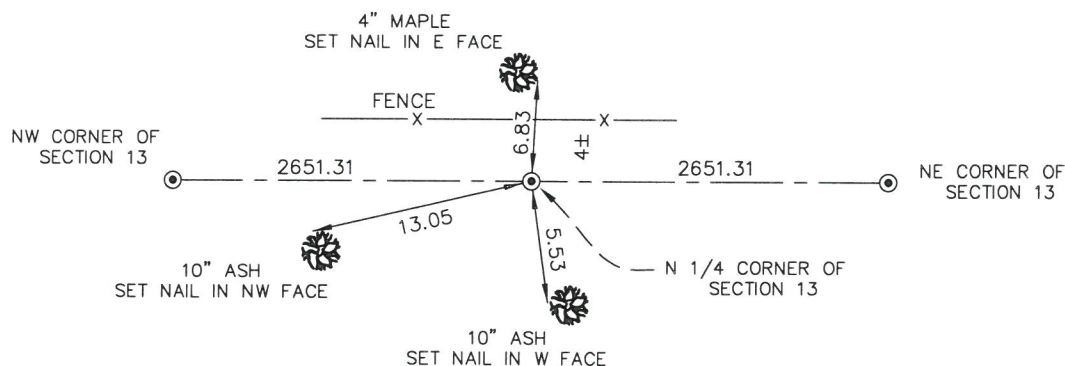
SKETCH OF REFERENCE TIES

NOT TO SCALE

KROSCHER LAND SURVEYORS, INC.
ASSUMES NO LIABILITY FOR THE ACCURACY
OF THE GPS COORDINATES SHOWN HEREON.
ALL COORDINATES AND DIMENSIONS
SHOULD BE FIELD VERIFIED BY THE USER.

THE BASIS OF BEARINGS FOR THIS
DRAWING IS THE KANABEC COUNTY
COORDINATE SYSTEM BY MNDOT,
NAD 1983, HARN 1996 ADJUSTMENT

SECTION 12



SECTION 13



Kroschel Land Surveyors, Inc.

1639 Main Street North, Suite 6, Pine City, MN 55063
Phone: 320-629-3267 Fax: 320-629-0176

Statement of evidence relative to this corner location is on back of page.

I hereby certify that this survey, plan, or report was prepared by me or under my direct supervision, that the United States public land survey monument record is correct and complete to the best of my knowledge and belief, and that I am a duly Licensed Land Surveyor under the laws of the State of Minnesota.

Tyler J. Kroschel

Date

12-29-2017

License No. 44490

☐ Land Surveyor

☒ County Surveyor

OFFICE OF THE COUNTY RECORDER

County of Kanabec

I hereby certify that this document was filed in the
County Recorder's office at _____ .M. on the
_____ day of _____ A.D., 20____

County Recorder _____

By _____, Deputy

DOCUMENT NO. _____

Statement of Evidence:

In November of 1855, Deputy Surveyor Isaac Banker set a post to mark the North Quarter Corner of Section 13, Township 42 North, Range 22 West, 4th Principal Meridian.

Reference ties were taken to:

14 inch Aspen at North 18 degrees 30 minutes East a distance of 18 links

20 inch Aspen at South 26 degrees 30 minutes West a distance of 32 links

All of the original Government corner evidence was searched for. None was found.

There is no resurvey information available for this corner.

In July 2017, a survey was made around Section 13, Township 42 North, Range 22 West, 4th Principal Meridian for Juventino Zamora to locate existing monuments, lines of occupation and establish search areas.

On 7/19/2017 I made a search with a metal locator and by probing the ground with machetes. The search location was on-line and halfway between the Northeast and Northwest corners of Section 13. No evidence of the corner was found. I determined the corner lost and set a 7/8" x 36" Rebar with Aluminum Cap on-line and halfway between the Northeast and Northwest corners of Section 13. Established reference ties and assigned Kanabec County Coordinates. This location fits an old east-west fence line within 4 feet±.



Kroschel Land Surveyors, Inc.

1639 Main Street North, Suite 6, Pine City, MN 55063
Phone: 320-629-3267 Fax: 320-629-0176