

# CERTIFICATE OF LOCATION OF GOVERNMENT CORNER

NORTHEAST Corner of Section 14, Township 42, Range 22, 4TH P.M.  
STATE OF MINNESOTA, County of KANABEC

At the corner location shown on the sketch:  
IN MARCH 2014 FOUND A KANABEC COUNTY MONUMENT

Kanabec County U.S. Survey Feet Coordinates  
NAD 1983, HARN 1996 Adjustment  
Obtained by RTK GPS Observation

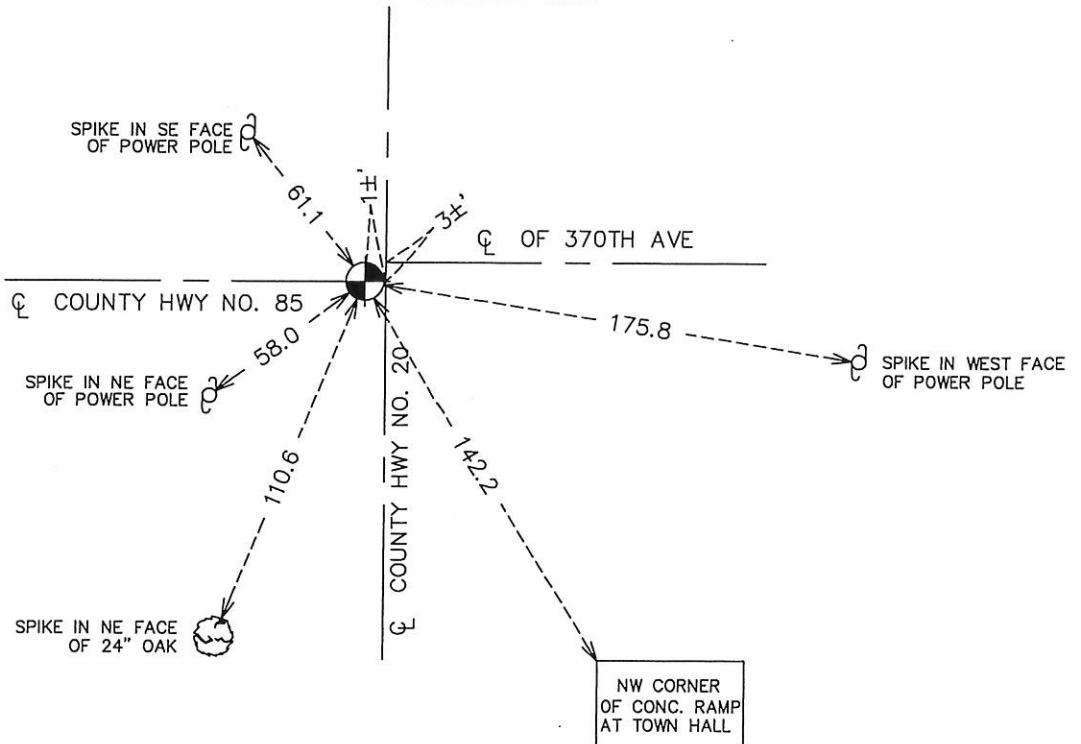
Northing= 245553.35

Easting= 455601.15

Note: NAD 1983, HARN 1996 Adjustment  
coordinates are NOT compatible with  
NAD 1983 coordinates

Note: 1 Meter=3937/1200 U.S. Survey Feet

## SKETCH OF REFERENCE TIES



Statement of evidence relative to this corner location is on back of page.

I hereby certify that this document and the data contained herein was prepared by me or under my direct supervision.

*Ernest G. Rud* Signature      12-10-14 Date

Registration No. Minn # 9008

Land Surveyor,      [ ] Professional Engineer

[ ] County Surveyor,      [ ] County Engineer

## OFFICE OF THE COUNTY RECORDER

County of \_\_\_\_\_

I hereby certify that this document was filed in the County Recorder's office at \_\_\_\_\_ M. on the

\_\_\_\_\_ day of \_\_\_\_\_ A.D., 20\_\_

County Recorder \_\_\_\_\_

BY \_\_\_\_\_ Deputy

DOCUMENT NO. \_\_\_\_\_

NE CORNER, SEC. 14, T42, R22

**STATEMENT OF EVIDENCE**

**IN 1975, M.B. RUDE FOUND AN IRON PIN AT THIS CORNER AND REPLACED IT WITH A CAST ALUMINUM MONUMENT AND FILED A CORNER CERTIFICATE.**

**IN 1994 HE FOUND THE CAST ALUMINUM MONUMENT SET IN 1975 IN GOOD CONDITION AND MADE NEW REFERENCE TIES.**

**IN MARCH 2000 HE FOUND THE BASE OF THE CAST ALUMINUM MONUMENT AND SET A 7/8" CAPPED REBAR ON TOP OF THE BROKEN OFF C.A.M. AND MADE NEW REFERENCE TIES.**

**IN MARCH 2014, E.G. RUD AND SONS FOUND THIS CAST IRON MONUMENT IN GOOD CONDITION AND ESTABLISHED KANABEC COUNTY COORDINATES ON THIS POSITION.**