

CERTIFICATE OF LOCATION OF GOVERNMENT CORNER

East Quarter Corner of Section 14, Township 42 North, Range 22 West,
4th Principal Meridian, Kanabec County, State of Minnesota

At the corner location shown on the sketch:
On 7/19/2017 set a Mag Spike.

Kanabec County U.S. Survey Feet Coordinates
NAD 1983, HARN 1996 Adjustment
Obtained by RTK GPS observation
Northing: 242980.7720
Easting: 455541.4425

Note: NAD 1983, HARN 1996 Adjustment
coordinates are NOT compatible with
NAD 1983 coordinates

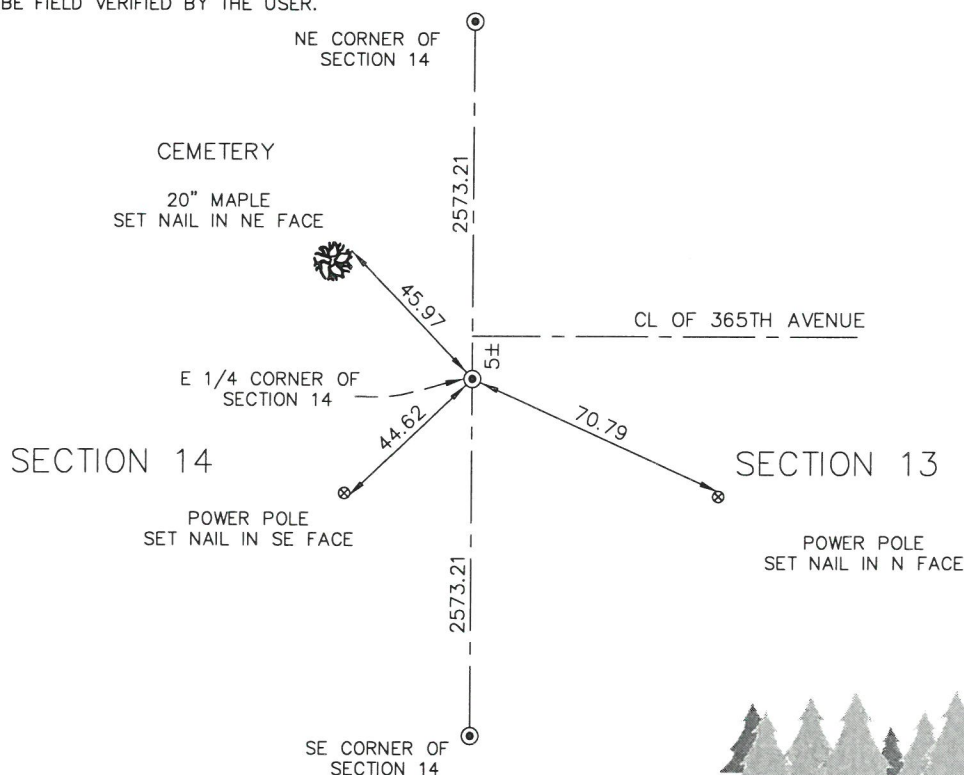
Note: 1 Meter = 3937/1200 U.S. Survey Feet

SKETCH OF REFERENCE TIES

NOT TO SCALE

KROSCHER LAND SURVEYORS, INC.
ASSUMES NO LIABILITY FOR THE ACCURACY
OF THE GPS COORDINATES SHOWN HEREON.
ALL COORDINATES AND DIMENSIONS
SHOULD BE FIELD VERIFIED BY THE USER.

THE BASIS OF BEARINGS FOR THIS
DRAWING IS THE KANABEC COUNTY
COORDINATE SYSTEM BY MNDOT,
NAD 1983, HARN 1996 ADJUSTMENT

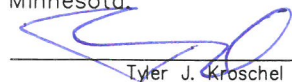


Kroschel Land Surveyors, Inc.

1639 Main Street North, Suite 6, Pine City, MN 55063
Phone: 320-629-3267 Fax: 320-629-0176

Statement of evidence relative to this corner location is on back of page.

I hereby certify that this survey, plan, or report was prepared by me or under my direct supervision, that the United States public land survey monument record is correct and complete to the best of my knowledge and belief, and that I am a duly Licensed Land Surveyor under the laws of the State of Minnesota.


Tyler J. Kroschel

12-29-2017
Date

License No. 44490

☐ Land Surveyor ☒ County Surveyor

OFFICE OF THE COUNTY RECORDER

County of Kanabec

I hereby certify that this document was filed in the
County Recorder's office at _____ M. on the
_____ day of _____ A.D., 20____

County Recorder _____

By _____, Deputy

DOCUMENT NO. _____

Statement of Evidence:

In November of 1855, Deputy Surveyor Isaac Banker set a post to mark the East Quarter Corner of Section 14, Township 42 North, Range 22 West, 4th Principal Meridian.

Reference ties were taken to:

- 40 inch White Pine at North 85 degrees East a distance of 15 links
- 10 inch Aspen at North 66 degrees West a distance of 16 links

All of the original Government corner evidence was searched for. None was found.

1903— A Supervisor's Road Order is filed in the County Auditor's Office opening a 66 foot road along the east line of Section 14.

1903— Book 1 of 2 of Surveys, P.26 filed at the County Highway Department. John Nelson surveyed a road for Kroschel Township along the east line of Section 14. He gives a distance of 77.97 chains (5146.02 feet) along the east line of Section 14. He does not state if anything was found or set at the East Quarter corner.

1958— Highway Construction plans filed at the County Highway Department do not show any information about the East Quarter corner of Section 14. The plans do show a fence line along the south line of the cemetery on the west side of the road. The plans also show a subcut in this area.

In July 2017, a survey was made around Section 13, Township 42 North, Range 22 West, 4th Principal Meridian for Juventino Zamora to locate existing monuments, lines of occupation and establish search areas.

On 7/19/2017 I made a search at the centerline intersection and at a lost position with a magnetic locator. No evidence of the corner was found. I measure 5146.42 feet along the east line of Section 14, which compares very well with Nelson's survey. I set a Mag Spike at the centerline of the County Highway and halfway between the Northeast and Southeast corners of Section 14. Established reference ties and assigned Kanabec County Coordinates. This location fits the southerly occupation line of the cemetery. There is no road order for the township road running east.

I accepted this position as the best available evidence of the original corner. I could not find any recorded maps of the cemetery. No excavation was made at this location. Any evidence of the original corner would have been removed by road construction.



Kroschel Land Surveyors, Inc.

1639 Main Street North, Suite 6, Pine City, MN 55063
Phone: 320-629-3267 Fax: 320-629-0176