

# CERTIFICATE OF LOCATION OF GOVERNMENT CORNER

North Quarter Corner of Section 24, Township 42 North, Range 22 West,  
4th Principal Meridian, Kanabec County, State of Minnesota

At the corner location shown on the sketch:  
On 1/13/2016 set a 7/8" x 36" Rebar with Aluminum Cap at a lost position.

Kanabec County U.S. Survey Feet Coordinates  
NAD 1983, HARN 1996 Adjustment  
Obtained by RTK GPS observation  
Northing: 240373.4223  
Easting: 458154.9420

Note: NAD 1983, HARN 1996 Adjustment coordinates are NOT compatible with NAD 1983 coordinates

Note: 1 Meter = 3937/1200 U.S. Survey Feet

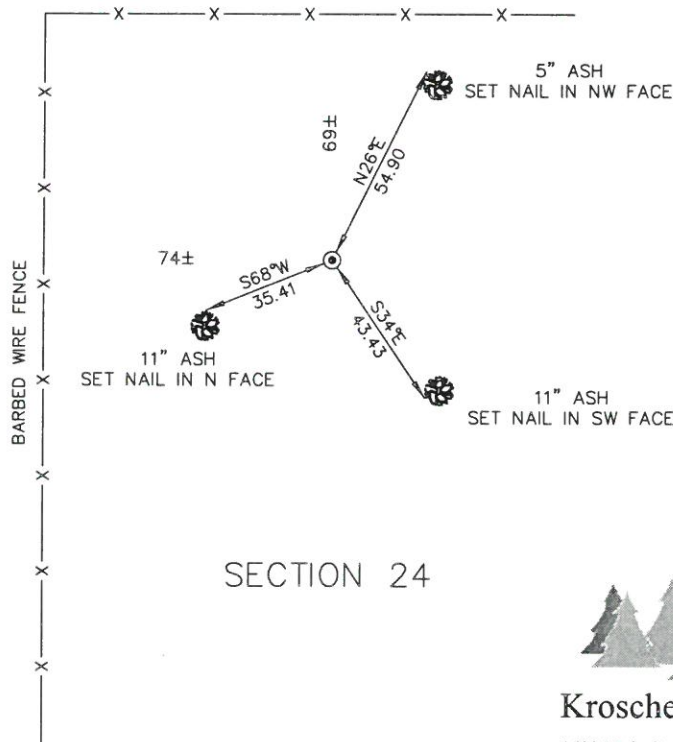
## SKETCH OF REFERENCE TIES

KROSCHEL LAND SURVEYORS, INC.  
ASSUMES NO LIABILITY FOR THE ACCURACY OF THE GPS COORDINATES SHOWN HEREON.  
ALL COORDINATES AND DIMENSIONS SHOULD BE FIELD VERIFIED BY THE USER.

NOT TO SCALE

THE BASIS OF BEARINGS FOR THIS DRAWING IS THE KANABEC COUNTY COORDINATE SYSTEM BY MNDOT, NAD 1983, HARN 1996 ADJUSTMENT

### SECTION 13



### SECTION 24



**Kroschel Land Surveyors, Inc.**

1639 Main Street North, Suite 6, Pine City, MN 55063  
Phone: 320-629-3267 Fax: 320-629-0176

Statement of evidence relative to this corner location is on back of page.

I hereby certify that this survey, plan, or report was prepared by me or under my direct supervision, that the United States public land survey monument record is correct and complete to the best of my knowledge and belief, and that I am a duly Licensed Land Surveyor under the laws of the State of Minnesota.

  
Tyler J. Kroschel

9-30-2016  
Date

License No. 44490

Land Surveyor

County Surveyor

### OFFICE OF THE COUNTY RECORDER

County of Kanabec

I hereby certify that this document was filed in the County Recorder's office at \_\_\_\_\_ .M. on the \_\_\_\_\_ day of \_\_\_\_\_ A.D., 20\_\_\_\_

County Recorder \_\_\_\_\_

By \_\_\_\_\_, Deputy

DOCUMENT NO. \_\_\_\_\_

Statement of Evidence:

In November of 1855, Deputy Surveyor Isaac Banker set a post to mark the North Quarter Corner of Section 24, Township 42 North, Range 22 West, 4th Principal Meridian.

Reference ties were taken to:

- 14 inch Spruce at North 20 degrees East a distance of 14 links
- 12 inch Spruce at South 10 degrees East a distance of 8 links

All of the original Government corner evidence was searched for. None was found.

There is no resurvey information on file for this corner.

In January 2016, I made a survey around Section 24, Township 42 North, Range 22 West, 4th Principal Meridian for Rodney and Bill Foss to locate existing monuments, lines of occupation and establish search areas.

On 1/13/2016, a search was made by checking with a magnetic locator by probing the ground with machetes. No evidence of the corner was found. Landowner Rodney Foss told me the fences were built by himself and his father and they had no knowledge of the actual corner location. I determined the corner lost and set a 7/8" x 36" Rebar with Aluminum Cap on-line and halfway between the Northeast and Southeast corners of Section 24. Established reference ties and assigned Kanabec County coordinates.

This location was determined to be the best available evidence of the original corner location.

The bearing and distance to the Northeast corner of Section 24 is S89°15'11"E 2675.71 feet.

The bearing and distance to the Northwest corner of Section 24 is N89°15'11"W 2675.71 feet.



**Kroschel Land Surveyors, Inc.**

1639 Main Street North, Suite 6, Pine City, MN 55063  
Phone: 320-629-3267 Fax: 320-629-0176