

CERTIFICATE OF LOCATION OF GOVERNMENT CORNER

Northeast Corner of Section 23, Township 42 North, Range 22 West,
4th Principal Meridian, Kanabec County, State of Minnesota

At the corner location shown on the sketch:
On 1/13/2016 set a Mag Nail in blacktop.

Kanabec County U.S. Survey Feet Coordinates
NAD 1983, HARN 1996 Adjustment
Obtained by RTK GPS observation
Northing: 240408.3053
Easting: 455479.4632

Note: NAD 1983, HARN 1996 Adjustment
coordinates are NOT compatible with
NAD 1983 coordinates
Note: 1 Meter = 3937/1200 U.S. Survey Feet

SKETCH OF REFERENCE TIES

KROSCHEL LAND SURVEYORS, INC.
ASSUMES NO LIABILITY FOR THE ACCURACY
OF THE GPS COORDINATES SHOWN HEREON.
ALL COORDINATES AND DIMENSIONS
SHOULD BE FIELD VERIFIED BY THE USER.

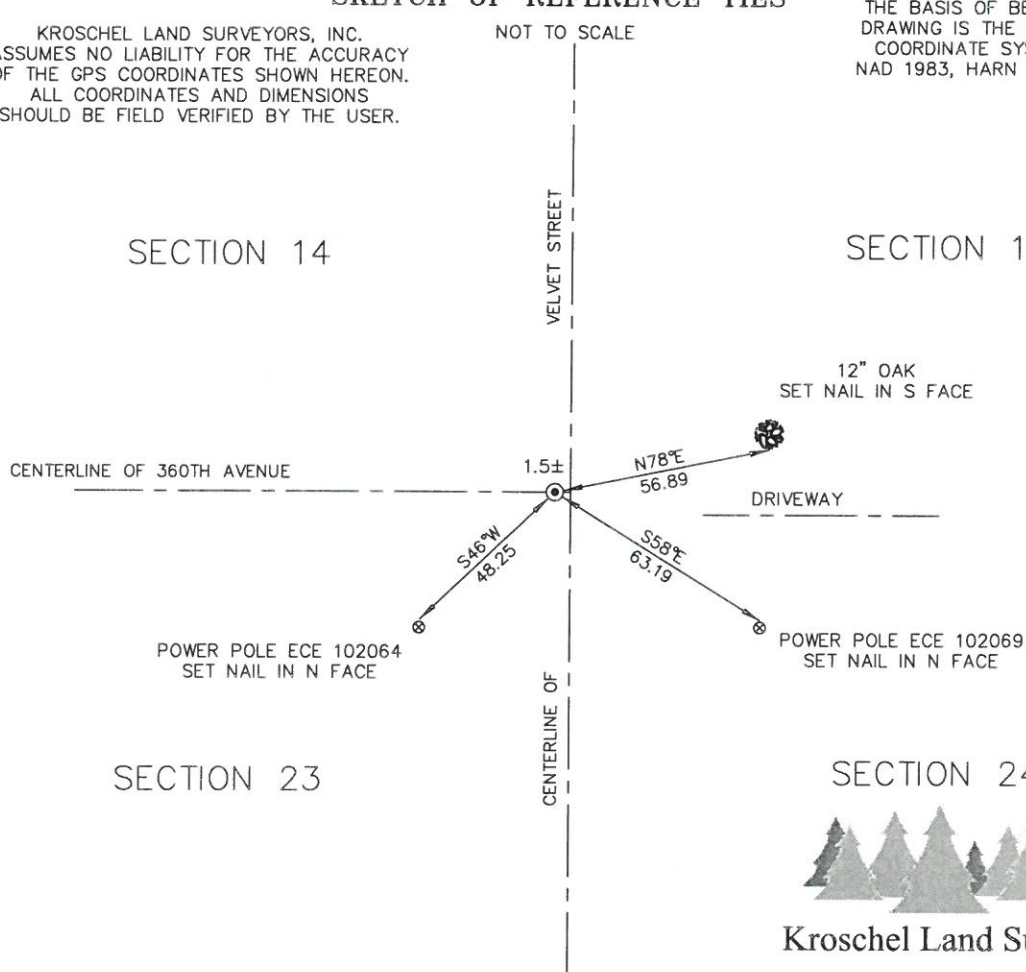
NOT TO SCALE

THE BASIS OF BEARINGS FOR THIS
DRAWING IS THE KANABEC COUNTY
COORDINATE SYSTEM BY MNDOT,
NAD 1983, HARN 1996 ADJUSTMENT



SECTION 14

SECTION 13



SECTION 23

SECTION 24




Kroschel Land Surveyors, Inc.

1639 Main Street North, Suite 6, Pine City, MN 55063
Phone: 320-629-3267 Fax: 320-629-0176

Statement of evidence relative to this corner location is on back of page.

I hereby certify that this survey, plan, or report was prepared by me or under my direct supervision, that the United States public land survey monument record is correct and complete to the best of my knowledge and belief, and that I am a duly Licensed Land Surveyor under the laws of the State of Minnesota.



Tyler J. Kroschel
License No. 44490
 Land Surveyor County Surveyor
Date 9-30-2016

OFFICE OF THE COUNTY RECORDER
County of Kanabec

I hereby certify that this document was filed in the County Recorder's office at _____ .M. on the _____ day of _____ A.D., 20____
County Recorder _____
By _____, Deputy
DOCUMENT NO. _____

120/43

Statement of Evidence:

In November of 1855, Deputy Surveyor Isaac Banker set a post to mark the Northeast Corner of Section 23, Township 42 North, Range 22 West, 4th Principal Meridian.

Reference ties were taken to:

- 16 inch Aspen at South 31 degrees East a distance of 33 links
- 8 inch W Birch at North 32 degrees East a distance of 14 links
- 9 inch Spruce at North 59 degrees 30 minutes West a distance of 27 links
- 14 inch Aspen at South 57 degrees West a distance of 45 links

All of the original Government corner evidence was searched for. None was found.

1903—County Surveyor John Nelson surveyed several roads in Kroschel Township. He measured 80.36 chains along the East line of Section 23 and 77.97 chains along the East line of Section 14. He does not state what type of monument was found or set at the Northeast corner of Section 23.

1958—Highway plans for County Highway 20 show the corner to be at the centerline intersection. A slight subcut was made through this intersection.

In January 2016, I made a survey around Section 24, Township 42 North, Range 22 West, 4th Principal Meridian for Rodney and Bill Foss to locate existing monuments, lines of occupation and establish search areas.

On 1/13/2016, a search was made by checking with a magnetic locator. No evidence of the corner was found. The corner falls in a newly paved road. I set a Mag Nail at the centerline intersection of the County Highway and the Township road running west. Established reference ties and assigned Kanabec County coordinates.

I measured 5296.98 feet to the Southeast corner of Section 23 (Nelson 5303.76 feet) and 5146.53 feet to the Northeast corner of Section 14 (Nelson 5146.02 feet).

This location was determined to be the best available evidence of the original corner location. No excavation was made at this location because of new pavement.



Kroschel Land Surveyors, Inc.

1639 Main Street North, Suite 6, Pine City, MN 55063
Phone: 320-629-3267 Fax: 320-629-0176