

CERTIFICATE OF LOCATION OF GOVERNMENT CORNER

East Quarter corner of Section 35, Township 42 North, Range 22 West,
4th Principal Meridian, Kanabec County, State of Minnesota

At the corner location shown on the sketch:
On 3/25/2010 found a Mag Nail.

Kanabec County U.S. Survey Feet Coordinates
NAD 1983, HARN 1996 Adjustment
Obtained by RTK GPS observation
Northing: 227251.4254
Easting: 455403.1131

Note: NAD 1983, HARN 1996 Adjustment
coordinates are NOT compatible with
NAD 1983 coordinates

Note: 1 Meter = 3937/1200 U.S. Survey Feet

SKETCH OF REFERENCE TIES

NOT TO SCALE

DISTANCE UNITS FOR THIS DRAWING IS
U.S. SURVEY FEET

THE BASIS OF BEARINGS FOR THIS
DRAWING IS THE KANABEC COUNTY
COORDINATE SYSTEM BY MNDOT,
NAD 1983, HARN 1996 ADJUSTMENT



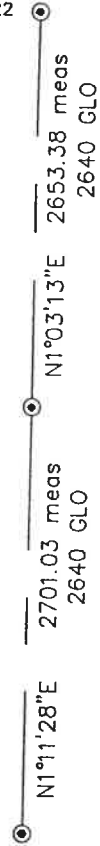
NE CORNER OF SECTION 35, T.42, R.22
KANABEC COUNTY MONUMENT

E 1/4 CORNER OF SECTION 35, T.42, R.22
FOUND MAG NAIL

SECTION 35

SECTION 36

SE CORNER OF SECTION 35, T.42, R.22
KANABEC COUNTY MONUMENT



Kroschel Land Surveyors, Inc.

1639 Main Street North, Suite 6, Pine City, MN 55063
Phone: 320-629-3267 Fax: 320-629-0176

Statement of evidence relative to this corner location is on back of page.

I hereby certify that this report was prepared by me or under my direct supervision, that the United States public land survey monument record is correct and complete to the best of my knowledge and belief, and that I am a duly Licensed Land Surveyor under the laws of the State of Minnesota.

Tyler J. Kroschel, County Surveyor

3-1-2022
Date

License No. 44490

OFFICE OF THE COUNTY RECORDER
County of Kanabec

I hereby certify that this document was filed in the
County Recorder's office at _____ .M. on the
_____ day of _____ A.D., 20____
County Recorder _____

_____, Deputy
DOCUMENT NO. _____

Statement of Evidence:

In November of 1857, Deputy Surveyor Isaac Banker set a post to mark the East Quarter Corner of Section 35, Township 42 North, Range 22 West, 4th Principal Meridian.

Reference ties were taken to:

- 16 inch Tamarack at North 44 degrees 50 minutes East a distance of 15 links
- 18 inch Tamarack at North 69 degrees 45 minutes West a distance of 42 links

All of the original Government corner evidence was searched for. None was found.

Circa 1900— Surveyor T. B. Vickery, made a survey of a road recorded in Book A of Surveys, Page 216 along the East line of Section 35. Vickery measured a distance of 81 chains along the east line of Section 35. His survey does not show if any Government corners were found or set.

1958— County Highway Plans for CSAH No. 20 show a highway PI at or near the East Quarter corner of Section 35. The highway PI is located at the centerline of the highway and fence lines east and west.

In March 2010, I made a survey around Section 36, Township 42 North, Range 22 West, 4th Principal Meridian for Doug Glaser to locate existing monuments, lines of occupation and establish search areas.

On 3/25/2010, I found a Mag Nail in the blacktop surface at the East Quarter corner of Section 35. The found Mag Nail was placed by former County Surveyor Ernie Rud, LS 9808, for a survey in Section 35, using the centerline of the County Highway and a fence line west. I accepted the found Mag Nail as the best available evidence of the original corner location. I left the Mag Nail as found and assigned Kanabec County Coordinates.

No excavation was made at this location.