

CERTIFICATE OF LOCATION OF GOVERNMENT CORNER

SOUTH QUARTER Corner of Section 36, Township 42, Range 22, 4TH P.M.

STATE OF MINNESOTA, County of KANABEC

At the corner location shown on the sketch:
On 10/ /2003 Found a 7/8" by 24" capped Rebar.

Kanabec County U.S. Survey Feet Coordinates
NAD 1983, HARN 1996 Adjustment
Obtained by RTK GPS Observation

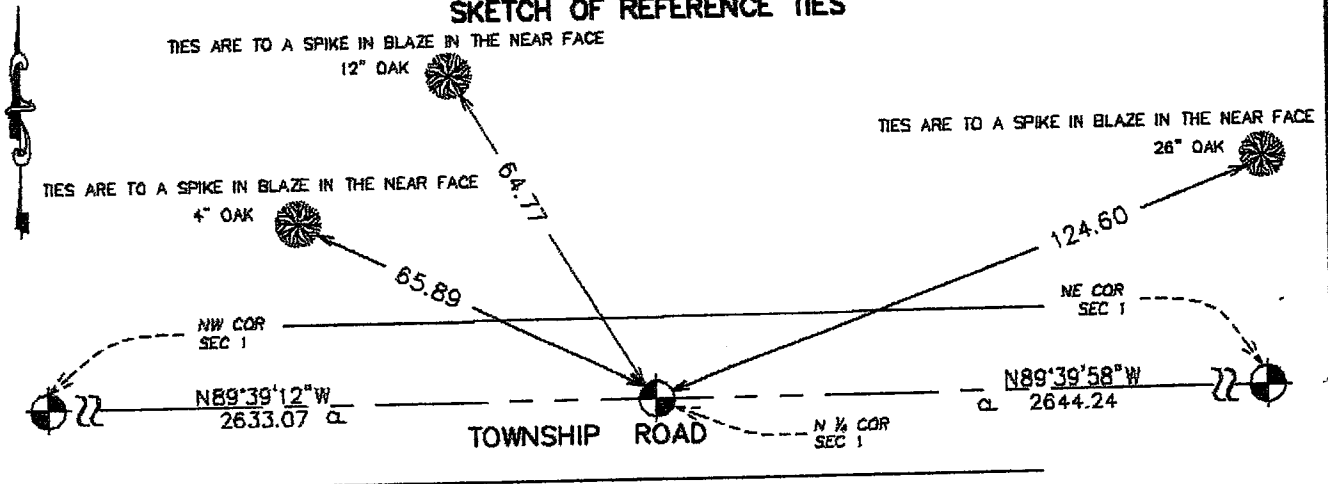
Northing= 224535.146

Easting= 457980.236

Note: NAD 1983, HARN 1996 Adjustment
coordinates are NOT compatible with
NAD 1983 coordinates

Note: 1 Meter=3937/1200 U.S. Survey Feet

SKETCH OF REFERENCE TIES



Statement of evidence relative to this corner location is on back of page.

I hereby certify that this document and the data contained herein was prepared by me or under my direct supervision.

Ernest Weed
Signature

11-30-2003
Date

Registration No. 9808

- Land Surveyor, Professional Engineer
 County Surveyor, County Engineer

OFFICE OF THE COUNTY RECORDER

County of Kanabec

I hereby certify that this document was filed in the County Recorder's office at 8:00 A.M. on the

3 day of December A.D., 2003

County Recorder Rhonda Olson

BY _____ Deputy

DOCUMENT NO. _____

STATEMENT OF EVIDENCE
(from tie sheet no. 894)

All of the original bearing trees are now gone.

There is no re-survey data on file for this corner.

In January of 1994, we ran a survey from the northeast corner of Section 1, Township 41, Range 21, to the northeast corner of Section 4, Township 41, Range 22, to locate existing monuments, lines of occupation and search areas.

This corner falls on an existing east-west township road.

A search was made for evidence of the corner, but no evidence was found. There is an existing fence running North from this corner that is 7 feet West of a split of the north line of Section 1.

The centerline of the existing east-west road and fence line North, extended South, was accepted as the best available evidence of the perpetuated location of this corner.

In October 2003, we did a survey around Section 1 and found this monument set by M.B. Rude in 1994. Checked the ties and established Kanabec County coordinates on this position.