

CERTIFICATE OF LOCATION OF GOVERNMENT CORNER

SOUTHEAST Corner of Section 35, Township 42, Range 22, 4TH P.M.

STATE OF MINNESOTA, County of KANABEC

At the corner location shown on the sketch:
On 10/ /2003 Found a 7/8" by 24" capped Rebar.

Kanabec County U.S. Survey Feet Coordinates
NAD 1983, HARN 1996 Adjustment
Obtained by RTK GPS Observation

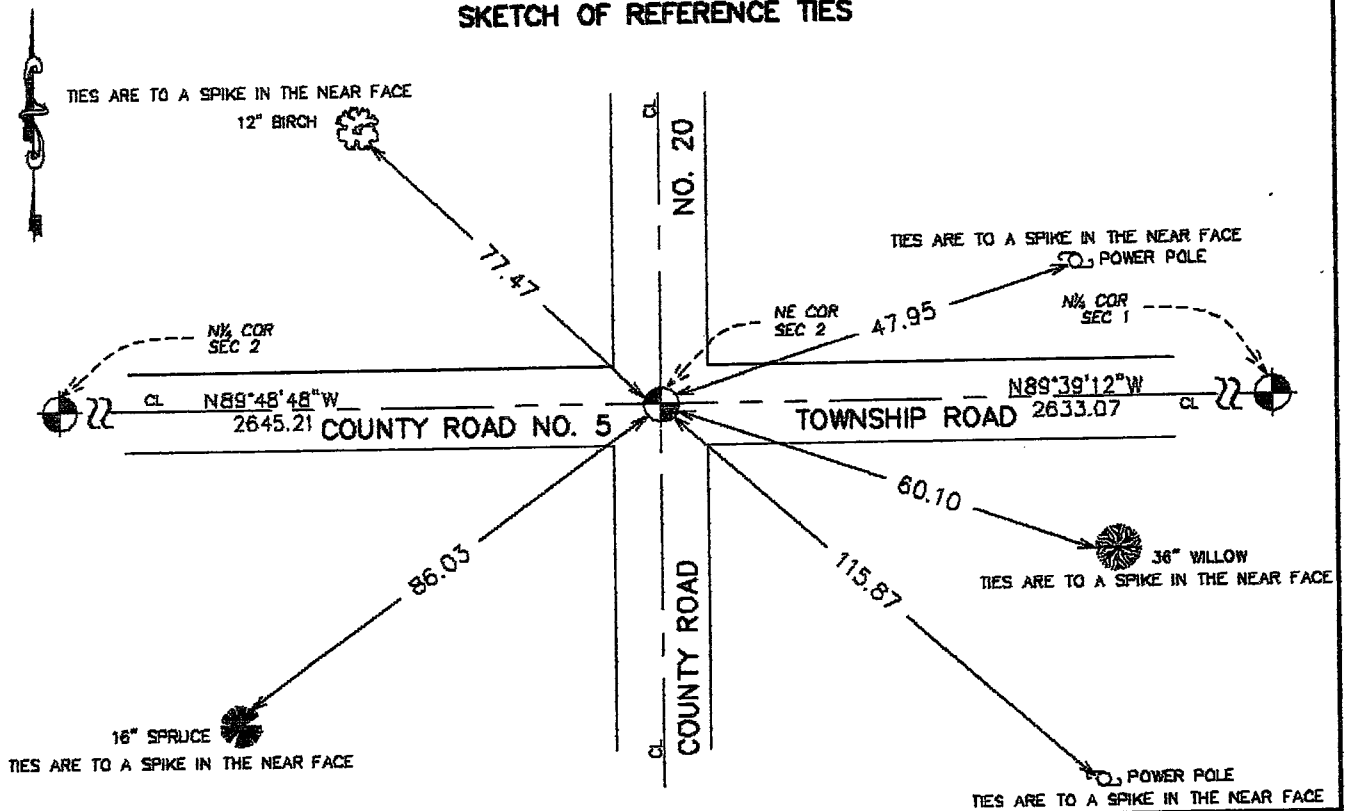
Northing= 224550.975

Easting= 455346.970

Note: NAD 1983, HARN 1996 Adjustment
coordinates are NOT compatible with
NAD 1983 coordinates

Note: 1 Meter=3937/1200 U.S. Survey Feet

SKETCH OF REFERENCE TIES



Statement of evidence relative to this corner location is on back of page.

I hereby certify that this document and the data contained herein was prepared by me or under my direct supervision.

Ernst Olson
Signature

11-30-03
Date

Registration No. 9808

Land Surveyor, Professional Engineer

County Surveyor, County Engineer

OFFICE OF THE COUNTY RECORDER

County of Kanabec

I hereby certify that this document was filed in the County Recorder's office at 8:00 A.M. on the 2 day of December A.D., 2003

County Recorder Rhonda Olson

BY _____ Deputy

DOCUMENT NO. _____

STATEMENT OF EVIDENCE
(from tie sheet no. 887)

All of the original government bearing trees are now gone.

In 1936, former County Surveyor, Frank Turnacliff, set a stone with no markings, surrounded by four stones and a whiskey bottle.

In December of 1993, we ran a survey from the northeast corner of Section 4, Township 41, Range 22, to the northeast corner of Section 1, Township 41, Range 21, to locate existing monuments, lines of occupation and establish search areas.

In May of 1994, we made a 4' by 10 feet by 10 feet excavation with a backhoe and found no evidence of the stone monument. The road appears to have been subcut and refilled.

The centerline intersection of roads was accepted as the best available evidence of the original corner location. The old records show a distance of 10581 feet to the northeast corner of Section 4; our measurement is 10578.46 feet.

In October 2003, we did a survey around Sections 1 and 2 and found the monument set by M.B.R. in 1994. We checked the ties and established Kanabec County coordinates on this position.