

CERTIFICATE OF LOCATION OF GOVERNMENT CORNER

SOUTH QUARTER Corner of Section 35, Township 42, Range 22, 4TH P.M.
 STATE OF MINNESOTA, County of KANABEC

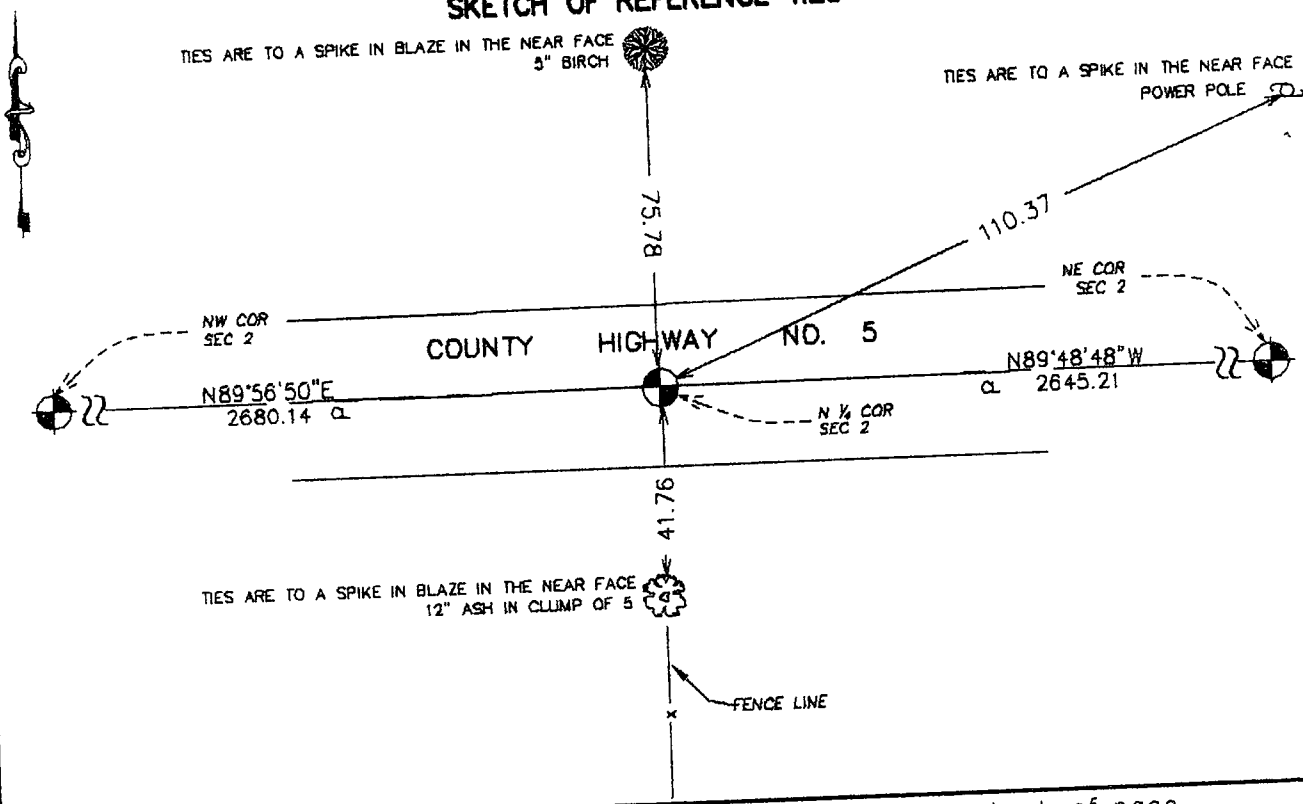
At the corner location shown on the sketch:
 On 10/ /2003 Found a 7/8" by 24" capped Rebar.

Kanabec County U.S. Survey Feet Coordinates
 NAD 1983, HARN 1996 Adjustment
 Obtained by RTK GPS Observation

Northing= 224559.588
 Easting= 452701.778

Note: NAD 1983, HARN 1996 Adjustment
 coordinates are NOT compatible with
 NAD 1983 coordinates
 Note: 1 Meter=3937/1200 U.S. Survey Feet

SKETCH OF REFERENCE TIES



Statement of evidence relative to this corner location is on back of page.

I hereby certify that this document and the data
 contained herein was prepared by me or under
 my direct supervision.

Ernest Blud
 Signature

11-30-2003
 Date

Registration No. 9808

- Land Surveyor, Professional Engineer
 County Surveyor, County Engineer

OFFICE OF THE COUNTY RECORDER

County of Kanabec

I hereby certify that this document was filed in
 the County Recorder's office at 8:00A M. on the

3 day of December A.D., 2003

County Recorder Randa Olson

BY _____ Deputy

DOCUMENT NO. _____

STATEMENT OF EVIDENCE
(from tie sheet no. 945)

All of the original government ties are now gone.

A supervisor's road order, dated October 23, 1899, runs along the north line of Section 2, Township 41, Range 22.

In May of 1997, we made a survey along the north and east lines of Section 2, Township 41, Range 22, to locate existing monuments, lines of occupation and establish search areas.

On May 19, 1997, we made a 2 ? feet by 15 feet by 30 feet excavation with a backhoe. No evidence of the corner was found in the excavation.

We accepted the centerline of the east-west road per the town road order and fence line South, extended North, as the perpetuated location of this corner.

In October 2003, we did a survey around Sections 1 and 2. We located this monument set by M.B. Rude in 1997. We established Kanabec County coordinates on this position.