

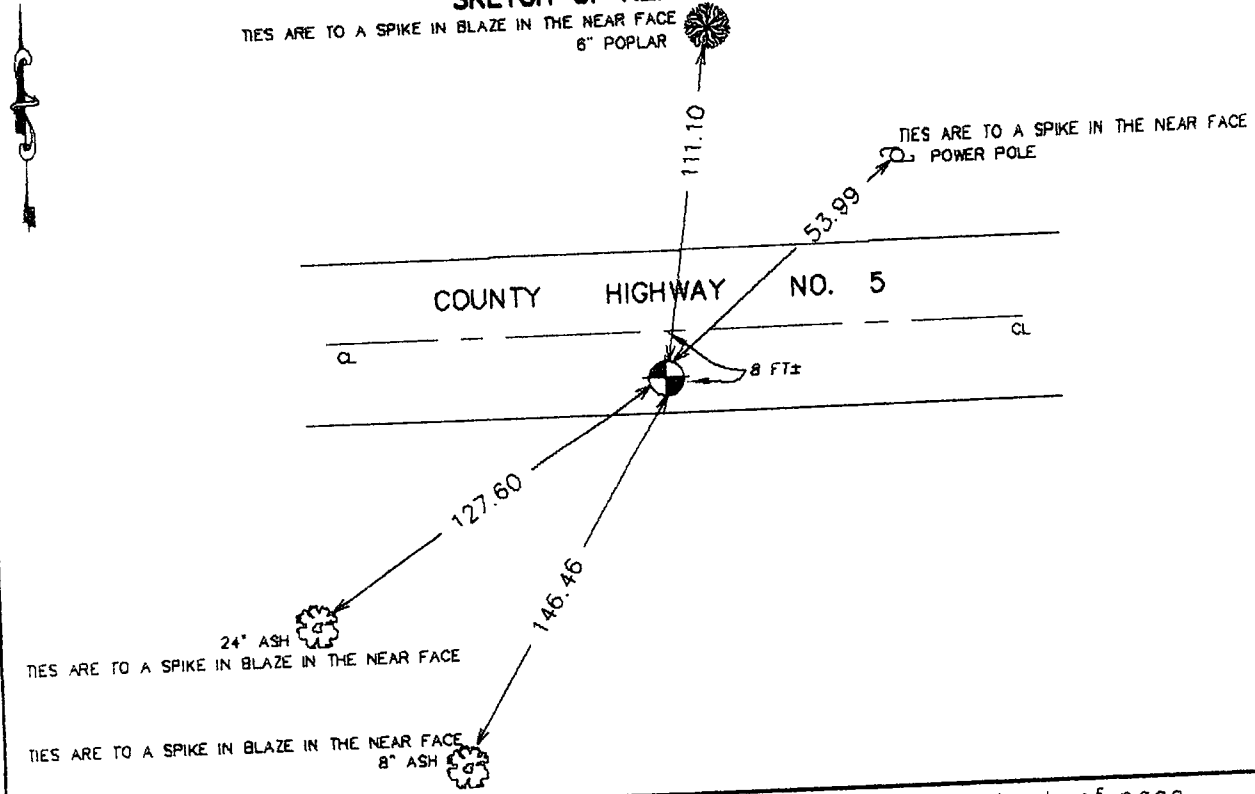
# CERTIFICATE OF LOCATION OF GOVERNMENT CORNER

SOUTHEAST Corner of Section 34, Township 42, Range 22, 4TH P.M.  
STATE OF MINNESOTA, County of KANABEC

At the corner location shown on the sketch:  
On 10/ /2003 Found a 7/8" by 24" capped Rebar.

Kanabec County U.S. Survey Feet Coordinates  
NAD 1983, HARN 1996 Adjustment  
Obtained by RTK GPS Observation  
Northing= 224557.117  
Easting= 450021.644  
Note: NAD 1983, HARN 1996 Adjustment  
coordinates are NOT compatible with  
NAD 1983 coordinates  
Note: 1 Meter=3937/1200 U.S. Survey Feet

### SKETCH OF REFERENCE TIES



Statement of evidence relative to this corner location is on back of page.

I hereby certify that this document and the data contained herein was prepared by me or under my direct supervision.

Ernst Hub 11-25-03  
Signature Date

Registration No. 9808

- Land Surveyor, [ ] Professional Engineer
- [ ] County Surveyor, [ ] County Engineer

### OFFICE OF THE COUNTY RECORDER

County of Kanabec

I hereby certify that this document was filed in the County Recorder's office at 8:00 A.M. on the

2 day of December A.D., 2003

County Recorder Rhonda Olson

BY \_\_\_\_\_ Deputy

DOCUMENT NO. \_\_\_\_\_

STATEMENT OF EVIDENCE  
(from tie sheet no. 944)

All of the original government ties are now gone.

A supervisors road order, dated October 23, 1899, runs along the north line of Section 2, Township 41, Range 22. In 1936, former County Surveyor, Fran Turinacliff, set a stone surrounded by four stones and a whiskey bottle, per the certificate of file at the County Recorder's Office.

In May of 1997, we made a survey along the north and east lines of Section 2, Township 41, Range 22, to locate existing monuments, lines of occupation and establish search areas.

On May 14, 1997, we made a 4' by 15 feet by 38 feet excavation with a backhoe and found a stone with four stones surrounding it. We accepted the found stone as the perpetuated corner from Frank Turinacliff's records.

In October 2003, we did a survey around Section 1 and 2. We found the monument set by M.B. Rude in 1997. We checked the ties and established Kanabec County coordinates on this position.