

CERTIFICATE OF LOCATION OF GOVERNMENT CORNER

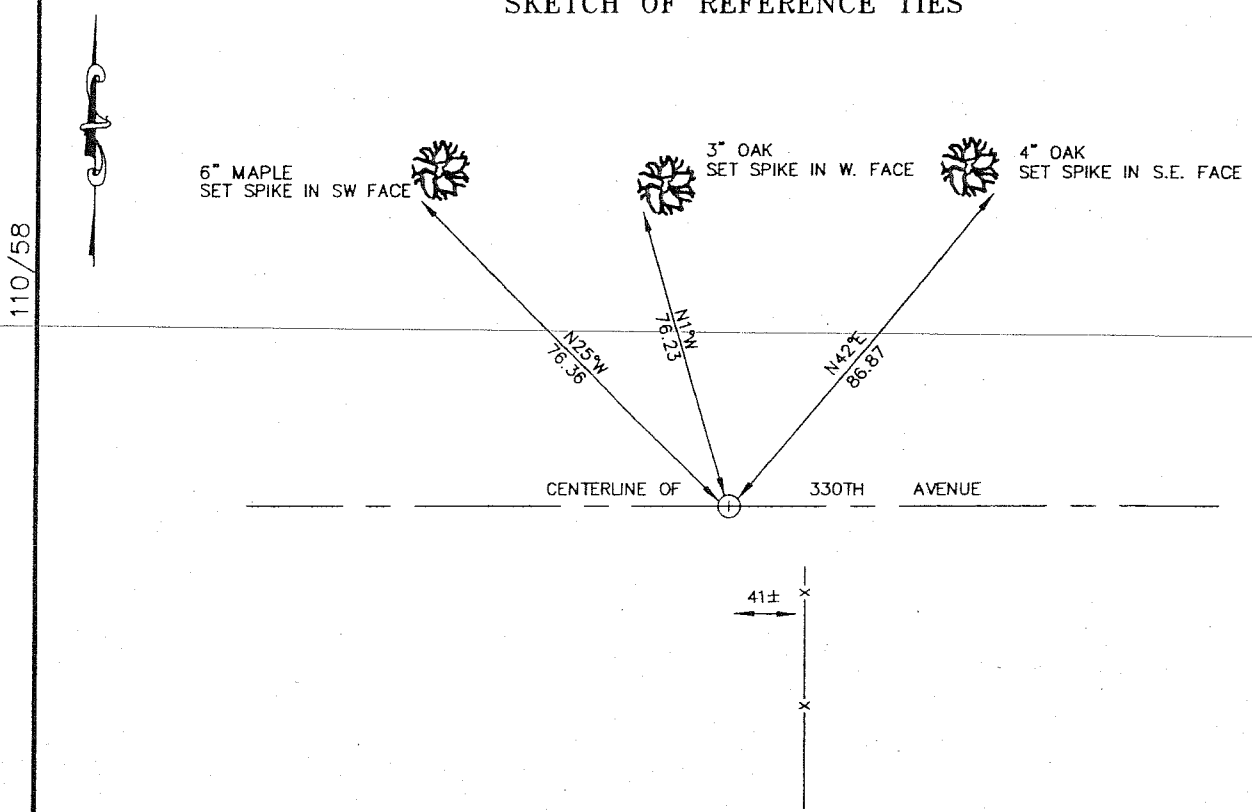
N1/4 Corner of Section 3, Township 41, Range 22,
4th Principal Meridian, Kanabec County, State of Minnesota

At the corner location shown on the sketch:
On 10/13/2005 Placed a 7/8" X 24" CAPPED
REBAR Monument at the N1/4 Corner of Sec. 3, T.
41, R. 22.

Kanabec County U.S. Survey Feet Coordinates
NAD 1983, HARN 1996 Adjustment
Obtained by RTK GPS observation
Northing: 224587.61
Easting: 447395.21

Note: NAD 1983, HARN 1996 Adjustment
coordinates are NOT compatible with
NAD 1983 coordinates
Note: 1 Meter = 3937/1200 U.S. Survey Feet

SKETCH OF REFERENCE TIES



110/58

Statement of evidence relative to this corner location is on back of page.

I hereby certify that this document and the data contained herein was prepared by me or under my direct supervision.

Mike B... 11-15-05
Signature Date

License No. 0195

- Land Surveyor
- Professional Engineer
- County Surveyor
- County Engineer

OFFICE OF THE COUNTY RECORDER County of Kanabec

I hereby certify that this document was filed in the County Recorders office at _____ .M. on the _____ day of _____ A.D., 20____

County Recorder _____
By _____, Deputy

DOCUMENT NO. _____

Statement of Evidence:

All the original bearing trees are now gone.

A Township Road Order was filed with the County Auditor's Office, dated October 23, 1899, which layed out a road along the North line of Sections 2 and 3, T. 41, R. 22.

In August of 2005, a survey was made around Section 3, T. 41, R. 22 for Michael and Michelle Henderschott to locate existing monuments, lines of occupation and to establish search areas.

On October 13, 2005, we made two 2.5' x 15' x 15' excavations with the County backhoe. The first excavation was made at the intersection of the Centerline of the road and a fence line South. The second excavation was made at the intersection of the road and at equal distance between the Northeast and Northwest Corners of Sec. 3. No evidence of the corner was found in either excavation. We placed a 7/8" x 24" CAPPED REBAR at the centerline of the road and at equal distance between the Northeast and Northwest Corners of Sec. 3. Established reference ties and assigned Kanabec County Coordinates.