

CERTIFICATE OF LOCATION OF GOVERNMENT CORNER

~~SE~~ SOUTHEAST Corner of Section 33, Township 42, Range 22, 4TH P.M.

STATE OF MINNESOTA, County of KANABEC

At the corner location shown on the sketch:
FOUND CAST ALUMINUM MONUMENT

Kanabec County U.S. Survey Feet Coordinates
NAD 1983, HARN 1996 Adjustment
Obtained by RTK GPS Observation

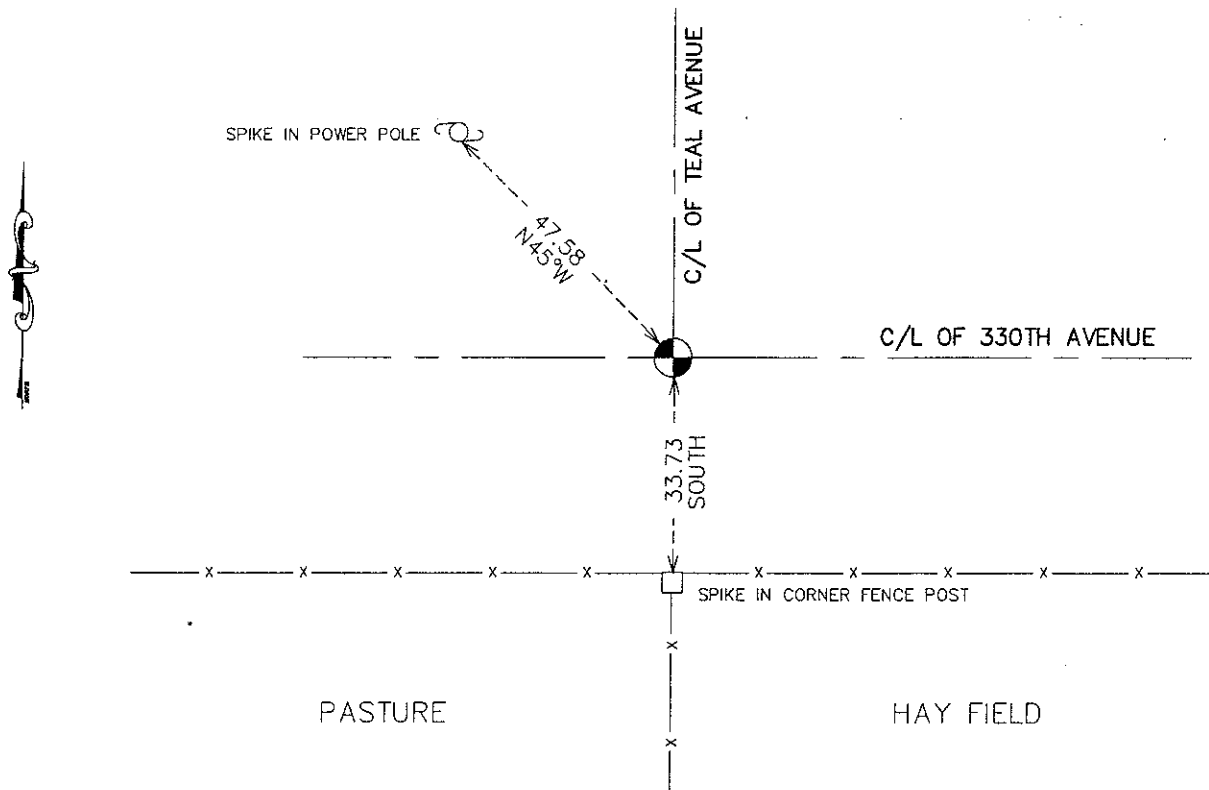
Northing= 224607.41

Easting= 444768.71

Note: NAD 1983, HARN 1996 Adjustment
coordinates are NOT compatible with
NAD 1983 coordinates

Note: 1 Meter=3937/1200 U.S. Survey Feet

SKETCH OF REFERENCE TIES



Statement of evidence relative to this corner location is on back of page.

I hereby certify that this document and the data contained herein was prepared by me or under my direct supervision.

E. J. Rud
Signature

11-27-10
Date

Registration No. 9808

Land Surveyor, Professional Engineer

County Surveyor, County Engineer

OFFICE OF THE COUNTY RECORDER

County of _____

I hereby certify that this document was filed in the County Recorder's office at _____ M. on the

_____ day of _____ A.D., 20__

County Recorder _____

BY _____ Deputy

DOCUMENT NO. _____

SE CORNER, SEC. 33, T42, R22

STATEMENT OF EVIDENCE

ON SEPT. 5, 1975 M.B. RUDE SET A MONUMENT FROM OLD WOOD STAKE, WHICH HE FOUND IN EXCAVATION, WHICH FIT THE CENTERLINE OF THE EAST-WEST ROAD AND TO BE SLIGHTLY WEST OF THE LINE OF OCCUPATION TO THE SOUTH. ALSO FOUND A SANDSTONE BELOW THE STAKE.

THE STAKE WAS FOUND BY GEO. H. JENKS IN 1920 AND HE SAID HE ALSO SET A SANDSTONE MARKED "X". THIS STONE COULD POSSIBLY BE THE ONE HE SET AS HE COULD HAVE MADE A MISTAKE.

ON APRIL 2010, E.G. RUD AND SONS, INC. FOUND THIS CAST ALUMINUM MONUMENT, RECHECKED THE TIES AND KANABEC COUNTY COORDINATES WERE ESTABLISHED ON THIS POSITION.