

CERTIFICATE OF LOCATION OF GOVERNMENT CORNER

544 NORTH QUARTER Corner of Section 33 , Township 47 N , Range 22 W , 4th P.M.

STATE OF MINNESOTA, County of KANABEC

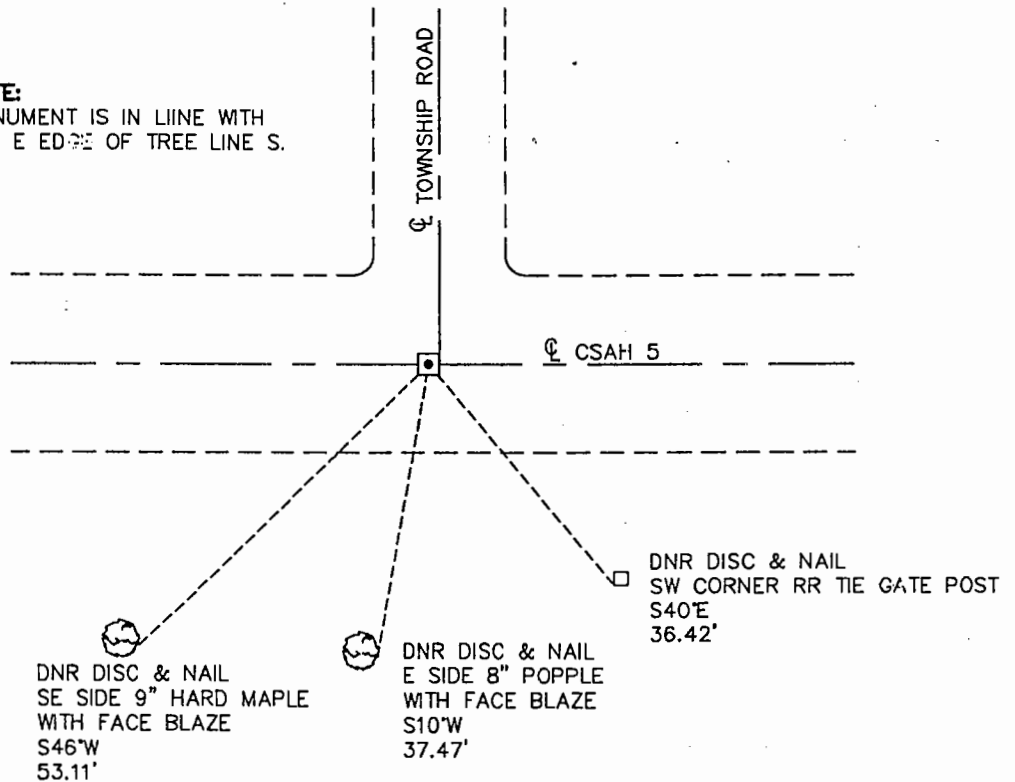
At the corner location shown on the sketch:

- On SEPT 1995 found a 1" x 2" x 4" WOOD STAKE LYING FLAT (DOWN 2')
DATE
- left monument as found, lowered monument, removed monument (explain)
- On 10-12-95 Placed a 3/4" x 24" REBAR WITH AN ALUMINUM CAP STAMPED: "DNR SURVEY MARKER"
DATE
IN CENTER LINE OF E-W ROAD, 1' W OF CENTER LINE TOWNSHIP ROAD N (DOWN 0.6').

SKETCH OF REFERENCE TIES



NOTE:
MONUMENT IS IN LINE WITH
THE E EDGE OF TREE LINE S.



NAD 1983
KANABEC
COUNTY
COORDINATES
N 224626.04
E 442128.88

NOT TO SCALE
BEARINGS OBSERVED WITH A COMPASS

Statement of evidence relative to this corner location is on back of page.

MARCH 1997
WMA01539

I hereby certify that this document and the data contained herein was prepared by me or under my direct supervision.

John D. Walker SIGNATURE 3/20/97 DATE

License Number 16098

- Land Surveyor, Professional Engineer
- County Surveyor, County Engineer

OFFICE OF THE COUNTY RECORDER

County of _____

I hereby certify that this document was filed in the Co. recorders office at _____ .M. on the _____ day of _____ A.D., 19____

County Recorder _____

By _____, Deputy

DOCUMENT NO. _____

North Quarter Corner Section 4, Township 41 North, Range 22 West, 4th P.M.

The Department of Natural Resources, Bureau of Engineering (BOE) made the following contacts for information concerning this corner:

Minnesota Secretary of States Office
County Auditor, Engineer, Recorder and Surveyor

1849 The U.S. General Land Office set a post to mark this corner and the following bearing trees were marked:

Tamarac 7"	S 35° W	3 links (1.98')
Tamarac 10"	N 35° W	3 links (1.98')

1995 The BOE hired the County Highway Department to dig for this corner. A 12'x12' hole was dug to a depth of 3.5' centered on the centerline of Co. Rd. 5 and a township road north. A 1"x 2" pointed stake, 4" long lying flat was found, but we couldn't tell where it had been in the ground. A Department Survey Marker was set at the obliterated position for the corner in the centerline of Co. Rd. 5, in line with the east edge of trees south and 1' west of the centerline of the township road north. This corner is 2644.21' from the northwest corner of section 4 and 2640.15' from the northeast corner.

For information regarding this survey, contact the MN Department of Natural Resources, Bureau of Engineering, Survey Section, 500 Lafayette Road, St. Paul, MN 55155-4029.