

# CERTIFICATE OF LOCATION OF GOVERNMENT CORNER

SW Corner of Section 31 , Township 42 , Range 23 , 4TH P.M.  
SOUTHEAST

STATE OF MINNESOTA, County of KANABEC

At the corner location shown on the sketch:  
On 03/ /2004 Set a Kanabec County Monument.

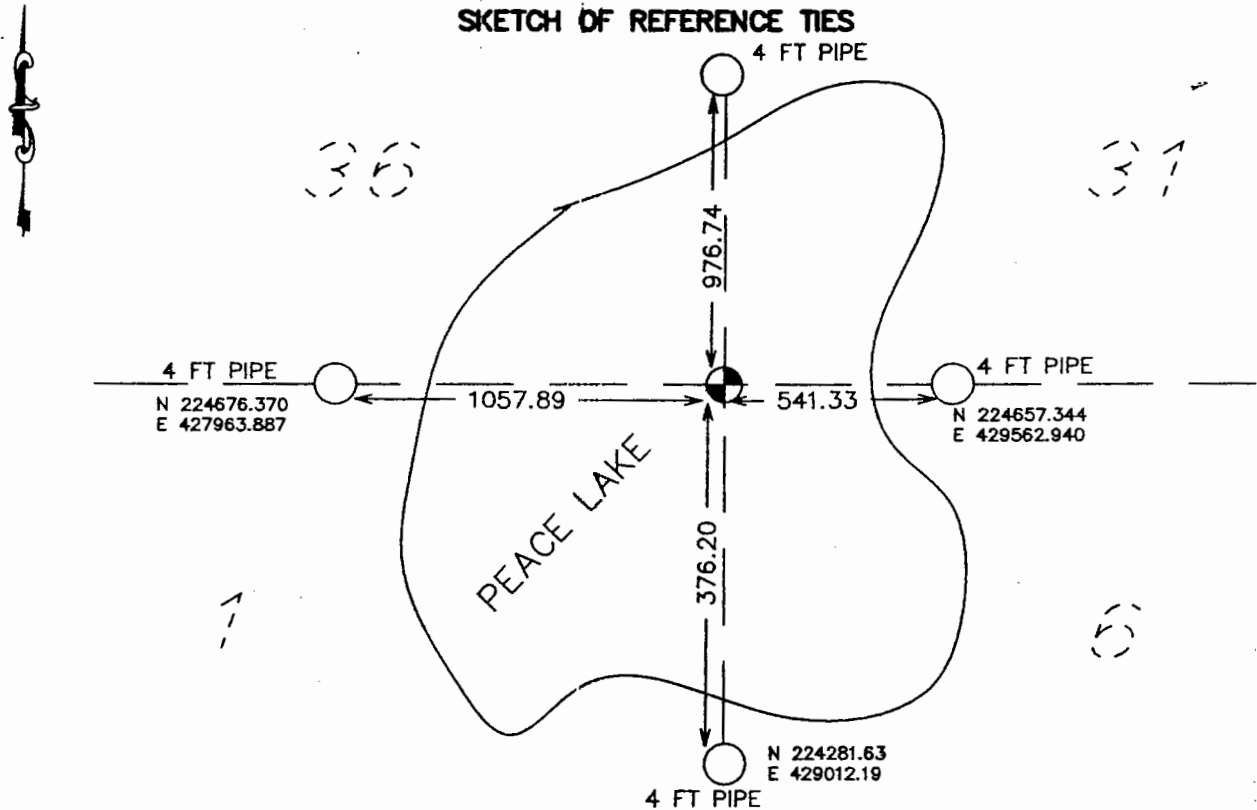
Kanabec County U.S. Survey Feet Coordinates  
NAD 1983, HARN 1996 Adjustment  
Obtained by RTK GPS Observation

Northing= 224657.71 (CORNER FALLS IN LAKE)  
Easting= 429021.61

Note: NAD 1983, HARN 1996 Adjustment coordinates are NOT compatible with NAD 1983 coordinates

Note: 1 Meter=3937/1200 U.S. Survey Feet

## SKETCH OF REFERENCE TIES



Statement of evidence relative to this corner location is on back of page.

I hereby certify that this document and the data contained herein was prepared by me or under my direct supervision.

Ernest Ihud  
Signature

9-08-05  
Date

Registration No. 9808

Land Surveyor, [ ] Professional Engineer

[ ] County Surveyor, [ ] County Engineer

## OFFICE OF THE COUNTY RECORDER

County of Kanabec

I hereby certify that this document was filed in the County Recorder's office at 8:00 A M. on the

21<sup>st</sup> day of Sept A.D., 2005

County Recorder Rhonda A. Olsun

BY \_\_\_\_\_ Deputy

DOCUMENT NO. \_\_\_\_\_

## STATEMENT OF EVIDENCE

Original corner was established in October 1851 by Deputy Surveyor John M. Gray. This corner fell in lake, so witness corners were set on the south and west shores of Peace Lake.

Evidence to the witness corners no longer remain. Witness corners were also set on the north and east sides of the lake in subsequent surveys. No record of surveys using this corner could be found at the Kanabec County offices or the DNR office in Brainerd.

This corner is surrounded by public land in all four quadrants. In March 2004, we surveyed several miles of lines in all four directions from this corner.

We set this corner basically on the easterly extension of the south line of Township 42, Range 23, and the south quarter extension of the east line of Township 42, Range 23. This fit the northerly extension of the east line of Township 41, Range 23.

This corner fell in Peace Lake, so we set four witness corners to the township corners and established Kanabec County coordinates on all witness corners.