

# CERTIFICATE OF LOCATION OF GOVERNMENT CORNER

West quarter 19 42 22  
East quarter Corner of Section 34, Township 42, Range 22, 4th P.M.

STATE OF MINNESOTA, County of KANABEC

At the corner location shown on the sketch:

*On March 16, 2004 we set a #7 x 24" rebar with an aluminum cap at intersection of old fences.*

Kanabec County U.S. Survey Feet Coordinates  
NAD 1983, HARN 1996 Adjustment  
Obtained by RTK GPS Observation

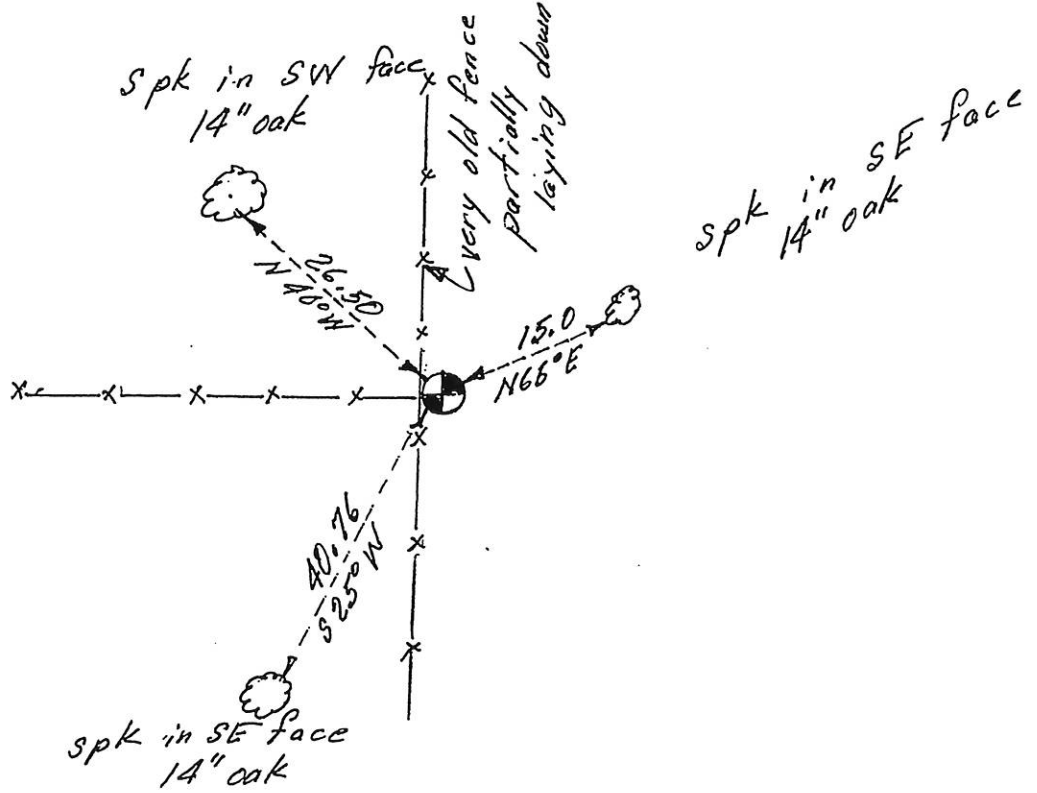
Northing= 237807.533

Easting= 429109.424

Note: NAD 1983, HARN 1996 Adjustment coordinates are NOT compatible with NAD 1983 coordinates

Note: 1 Meter=3937/1200 U.S. Survey Feet

### SKETCH OF REFERENCE TIES



Statement of evidence relative to this corner location is on back of page.

I hereby certify that this document and the data contained herein was prepared by me or under my direct supervision.

Ernest L. Rud  
Signature

May 1, 2014  
Date

Registration No. 9808

Land Surveyor,  Professional Engineer

County Surveyor,  County Engineer

### OFFICE OF THE COUNTY RECORDER

County of \_\_\_\_\_

I hereby certify that this document was filed in the County Recorder's office at \_\_\_\_\_ M. on the

\_\_\_\_\_ day of \_\_\_\_\_ A.D., 20\_\_

County Recorder \_\_\_\_\_

BY \_\_\_\_\_ Deputy

DOCUMENT NO. \_\_\_\_\_

West Quarter Corner Section 19, township 42, Range 22

4222032

East Quarter Corner Section 24, Township 42, Range 23

4223006

The original Government post was set by U.S. Deputy Surveyor in November, 1849 and two bearing trees noted as being;

10" Aspen bearing South 20° East at 14 Links

8" Birch bearing South 20° West at 7 Links

No evidence for the corner or bearing trees could be found.

No records of subsequent surveys could be found at Kanabec County.

There is a very old fence running north, south & west at this location. No evidence of a corner could be found but we considered this fence corner location to be the best evidence for the perpetuation of this corner. A #7 rebar 24" long with an aluminum cap was set, ties taken and Kanabec County Coordinates established on this position. This position is 4' south and 18' east of a last position.