

4222030

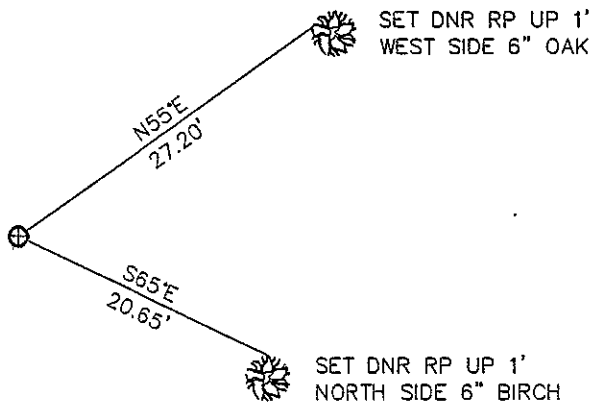
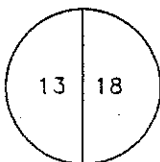
Index No. L-25

# CERTIFICATE OF LOCATION OF GOVERNMENT CORNER

EAST QUARTER Corner of Section 13, Township 42 N, Range 23 W  
4TH Principal Meridian, State of Minnesota, County of KANABEC

At the corner location shown on the sketch:

- On \_\_\_\_\_ found a \_\_\_\_\_  
DATE
- left monument as found,  lowered monument,  removed monument (explain)
- On 4/4/05 Placed a 1" X 3.5' IRON PIPE WITH SURVEY CAP IN POPLAR SLASH  
DATE



KANABEC COUNTY  
COORDINATE SYSTEM  
NAD 83 96 ADJ.  
N = 243104.53  
E = 429110.90

BEARINGS OBSERVED WITH A COMPASS

Statement of evidence for this corner location is on back of this page.

OCTOBER 2005  
SFT00056

I certify that this document was researched and prepared by me or under my direct supervision.

SIGNATURE [Signature] DATE 12/4/09 License Number 16098

Title:  Land Surveyor  Professional Engineer  County Surveyor  County Engineer

**East Quarter Corner Section 13, Township 42 North, Range 23 West**

The Department of Natural Resources, Division of Lands and Minerals, contacted the following offices for information regarding this corner:

MN Secretary of State  
Kanabec County Surveyor  
Kanabec County Recorder's Office  
Kanabec County Engineer's Office  
E.G. Rud & Sons, Inc., Land Surveyors

1849 The US General Land Office field notes, on file in the Secretary of State's Office, show this corner to be marked with a post and the following bearing trees were marked:

Spruce 12" N 60°W 22 links (14.52')  
Spruce 7" S 55°E 6 links (3.96')

2003 LLS Ernie Rud in a survey for Section 12 showed a County Monument for the Northeast Corner of Section 13 and listed the coordinates.

2004 LLS Ernie Rud certified the Northeast Corner of Section 24 and listed the coordinates.

2005 In April the DNR survey crew searched for evidence of the corner and found nothing. A lost position for the corner was calculated using Rud's coordinates and a 1" iron pipe with survey cap was set in a poplar slash and ties were taken.

Northeast Corner Section 13 bears N00°12'42"E 2646.30'  
Northeast Corner Section 24 bears S00°12'42"W 2646.30'

For more information on our survey in this area, please contact MN DNR, Division of Lands and Minerals, Survey Section, 1601 Minnesota Drive, Brainerd, MN 56401