

990

Index No. J-25

# CERTIFICATE OF LOCATION OF GOVERNMENT CORNER

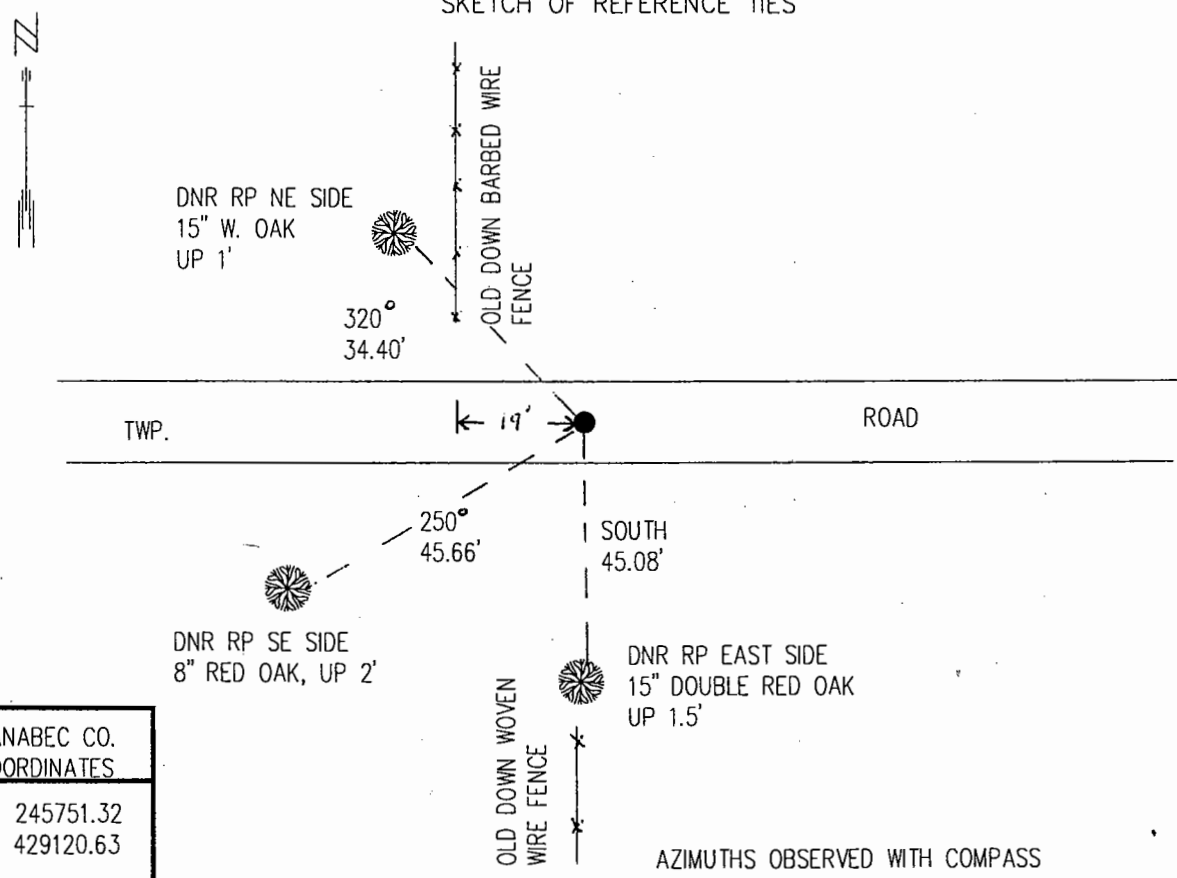
<sup>nw</sup>  
~~NORTHEAST~~ Corner of Section 15<sup>18</sup>, Township 42, Range 23<sup>22</sup>, 4TH P.M.

STATE OF MINNESOTA, County of KANABEC

At the corner location shown on the sketch:

- On \_\_\_\_\_ found a \_\_\_\_\_  
DATE
- left monument as found,  lowered monument,  removed monument (explain)
- On 8/17/98 Placed a 3/4" X 24" IRON ROD WITH "MN DNR SURVEY MARKER" CAP  
DATE

## SKETCH OF REFERENCE TIES



KANABEC CO. COORDINATES	
N	245751.32
E	429120.63

AZIMUTHS OBSERVED WITH COMPASS

Statement of evidence relative to this corner location is on back of page.

12/98  
WMA00271

I hereby certify that this document and the data contained herein was prepared by me or under my direct supervision.

John D. Walker 12/8/98  
SIGNATURE DATE

License Number 16098

Land Surveyor,  Professional Engineer  
 County Surveyor,  County Engineer

OFFICE OF THE COUNTY RECORDER  
County of \_\_\_\_\_

I hereby certify that this document was filed in the Co. recorders office at \_\_\_\_\_ M. on the \_\_\_\_\_ day of \_\_\_\_\_ A.D., 19\_\_\_\_

County Recorder \_\_\_\_\_  
By \_\_\_\_\_, Deputy

DOCUMENT NO. \_\_\_\_\_

Northeast Corner Section 13, Township 42 North, Range 23 West

The DNR Bureau of Engineering contacted the following for survey information:

Minnesota Secretary of State's Office  
Kanabec County Recordors's Office  
Kanabec County Highway Engineer  
Kanabec County Surveyor  
Bill Hayden, Land Surveyor  
Terrence Johnson, Land Surveyor

1849 U.S. General Land Office notes obtained from the Secretary of State's Office states that a post was set to mark the corner with the following bearing trees marked:

Sugar 10" S 22° E 32 links (21.12 feet)  
Birch 10" N 89° E 30 links (19.80 feet)  
W. Pine 20" S 73° E/W 36 links (23.76 feet)?  
Sugar 16" N 40° E 22 links (14.52 feet)

1909 County Surveyor, John Nelson, terminated four mile road at the section corner.

1997 MN DNR Bureau of Engineering searched for the corner at the lost position and found nothing.

1998 MN DNR Bureau of Engineering established this corner at the intersection of road east-west, and fence line south and set a DNR Survey Marker. Ties taken as shown on the face of this certificate. Measurements to the section corner east, Northeast Corner Section 36 south and the Northeast Corner Section 1 north are:

S89°44'58"W 5344.11 feet  
S00°14'46"W 15835.82 feet  
N00°50'43" 10677.73 feet

For more information on our survey in this area please contact MN DNR, Bureau of Engineering, Survey Section, 1601 Minnesota Drive, Brainerd, MN 56425