

4222027

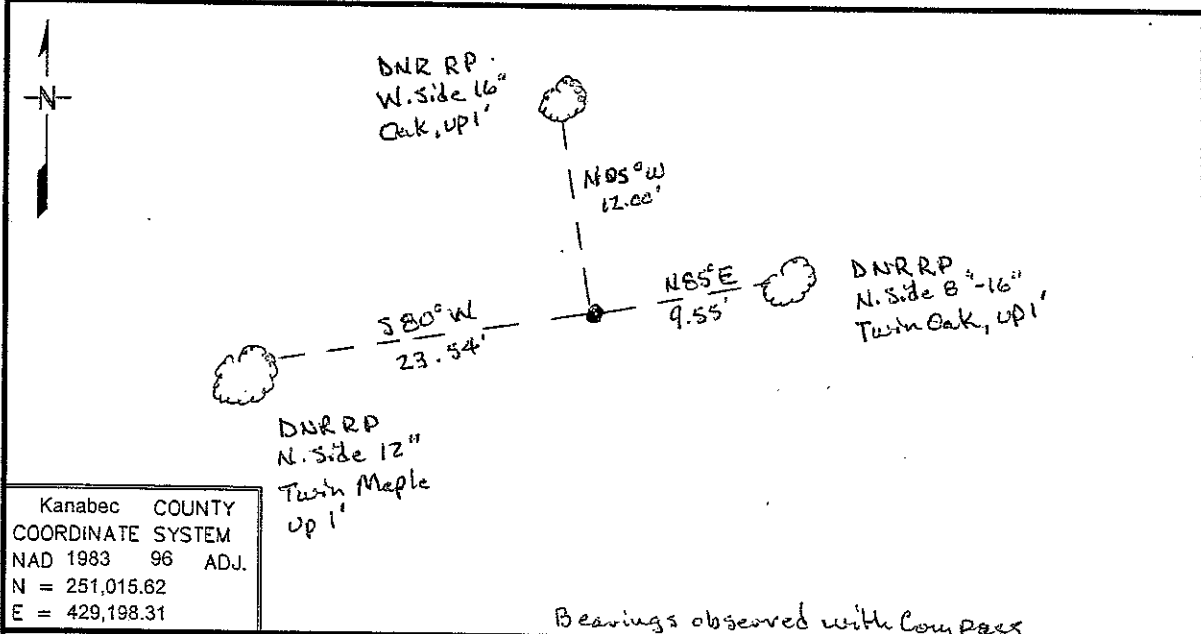
Index No. E - 25

CERTIFICATE OF LOCATION OF GOVERNMENT CORNER

Northeast Corner of Section 12, Township 42, Range 23
4th Principal Meridian, State of Minnesota, County of Kanabec

At the corner location shown on the sketch:

- On _____ found a _____
DATE _____
- left monument as found, lowered monument, removed monument (explain)
- On 4/27/2009 Placed a 3/4" X 24" Rebar with LLS cap #16098. flush in woods
DATE _____



Kanabec COUNTY
COORDINATE SYSTEM
NAD 1983 96 ADJ.
N = 251,015.62
E = 429,198.31

Bearings observed with Compass

Statement of evidence for this corner location is on back of this page.

July 2009 JDW
SFT00056 Req.#845

I certify that this document was researched and prepared by me or under my direct supervision.

SIGNATURE [Signature] DATE 7/8/09 License Number 16098
 Title: Land Surveyor Professional Engineer County Surveyor County Engineer

Northeast Corner Section 12, Township 42 North, Range 23 West

The DNR Bureau of Engineering contacted the following for survey information:

Minnesota Secretary of State's Office
Kanabec County Recorder's Office
Kanabec County Highway Engineer
Kanabec County Surveyor
Bill Hayden, Land Surveyor
Terrence Johnson, Land Surveyor

- 1849 U.S. General Land Office notes obtained from the Secretary of State's Office states that a post was set to mark the corner with the following bearing trees marked:
Maple 9" S 60° W 23 links (15.18 feet)
Sugar 8" N 58° W 34 links (22.44 feet)
Sugar 14" N 35° E 6 links (3.96 feet)
Balsam 10" S 10° E 16 links (10.56 feet)
- 1998 MN DNR Bureau of Engineering established this corner lost between the Northeast Corner Section 13 and the Northeast Corner Section 1. The corner was not searched for at this time. The distances to the corners south and north are:
S00°50'43"W 5264.83 feet
N00°50'43"E 5412.90 feet
- 2009 MNDNR Survey crew searched for this without success. A 3/4" x 24'' rebar with a plastic cap stamped LS 16098 on it was set to mark the lost position for this corner.

For more information on our survey in this area please contact MNDNR, Division of Lands and Minerals, Survey Section, 1601 Minnesota Drive, Brainerd, MN 56425