

# CERTIFICATE OF LOCATION OF GOVERNMENT CORNER

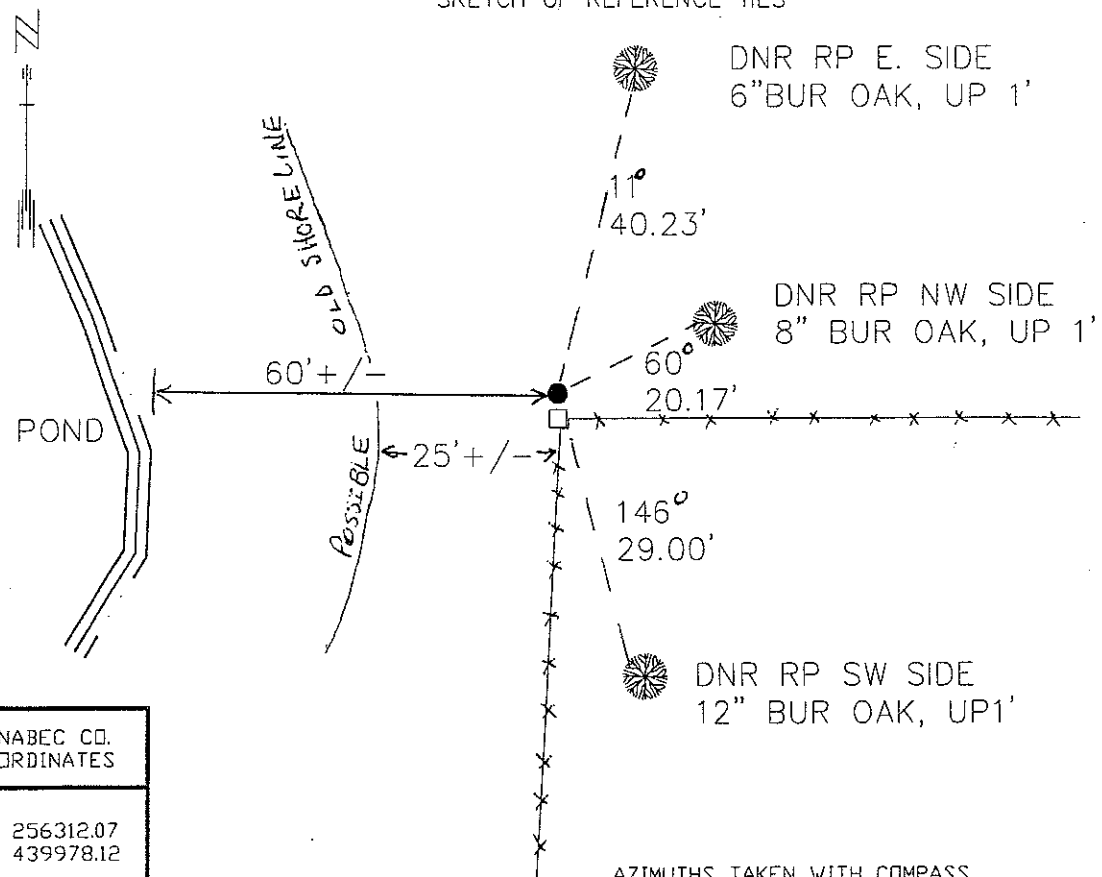
NORTHEAST Corner of Section 5, Township 42, Range 22, 4TH P.M.

STATE OF MINNESOTA, County of KANABEC

At the corner location shown on the sketch:

- On 9/15/97 found a CORNER FENCE POST  
DATE
- left monument as found,     lowered monument,     removed monument (explain)
- On 8/18/98 Placed a 3/4" X 24" IRON ROD WITH A "MNDNR SURVEY MARKER" CAP  
DATE

SKETCH OF REFERENCE TIES



KANABEC CO.  
COORDINATES

N 256312.07  
E 439978.12

AZIMUTHS TAKEN WITH COMPASS

Statement of evidence relative to this corner location is on back of page.

12/98  
WMA00271

I hereby certify that this document and the data contained herein was prepared by me or under my direct supervision.

John D. Walker      12/8/98  
SIGNATURE                      DATE

License Number 16098

- Land Surveyor,     Professional Engineer
- County Surveyor,     County Engineer

OFFICE OF THE COUNTY RECORDER  
 County of \_\_\_\_\_

I hereby certify that this document was filed in the Co. recorders office at \_\_\_\_\_ .M. on the \_\_\_\_\_ day of \_\_\_\_\_ A.D., 19\_\_\_\_

County Recorder \_\_\_\_\_  
 By \_\_\_\_\_, Deputy

DOCUMENT NO. \_\_\_\_\_

## Northeast Corner Section 5, Township 42 North, Range 22 West

The DNR Bureau of Engineering contacted the following for survey information:

Minnesota Secretary of State's Office  
 Kanabec County Recorders's Office  
 Kanabec County Highway Engineer  
 Kanabec County Surveyor  
 Aitkin County Recorder's Office  
 Aitkin County Land Department  
 Bill Hayden, Land Surveyor  
 Terrence Johnson, Land Surveyor

1849 U.S. General Land Office notes obtained from the Secretary of State's Office states that a post was set to mark the corner with the following bearing trees marked:

W. Oak 12" N 70° E 20 links (13.20 feet)  
 Balsam 7" S 65° E 21 links (13.86 feet)  
 W. Oak 7" S 40° W 36 links (23.76 feet)

A 30" White Pine was on the township line 4.42 chains (291.7') east and a pond was 0.5 chains (33') west of the corner.

1997 MN DNR Bureau of Engineering searched for the corner at the lost position and a fence corner was located in the corner area.

1998 MN DNR Bureau of Engineering set a DNR Survey Marker at a fence corner, fences east and south-southwest. There are depressions in the ground that fits the GLO bearing tree locations northeast and southeast and the line tree east. The pond is now 60'+/- west of the corner fence post, but there is a definite difference in vegetation about 25' west. Ties were taken as shown on the face of this certificate. Measurements to the quarter section corners south, west, and Northeast Corner Section 3 east are:

S01°20'44"W 2729.12 feet  
 N89°22'48"W 2632.37 feet  
 S89°45'53"E 10479.53 feet

For more information on our survey in this area please contact MN DNR, Bureau of Engineering, Survey Section, 1601 Minnesota Drive, Brainerd, MN 56425