

# CERTIFICATE OF LOCATION OF GOVERNMENT CORNER

NORTH QUARTER Corner of Section 4, Township 42., Range 22., 4TH P.M.

STATE OF MINNESOTA, County of KANABEC

At the corner location shown on the sketch:  
 3/4" IRON PIPE WITH CAP STAMPED "RLS 40341"

Kanabec County U.S. Survey Feet Coordinates  
 NAD 1983, HARN 1996 Adjustment  
 Obtained by RTK GPS Observation

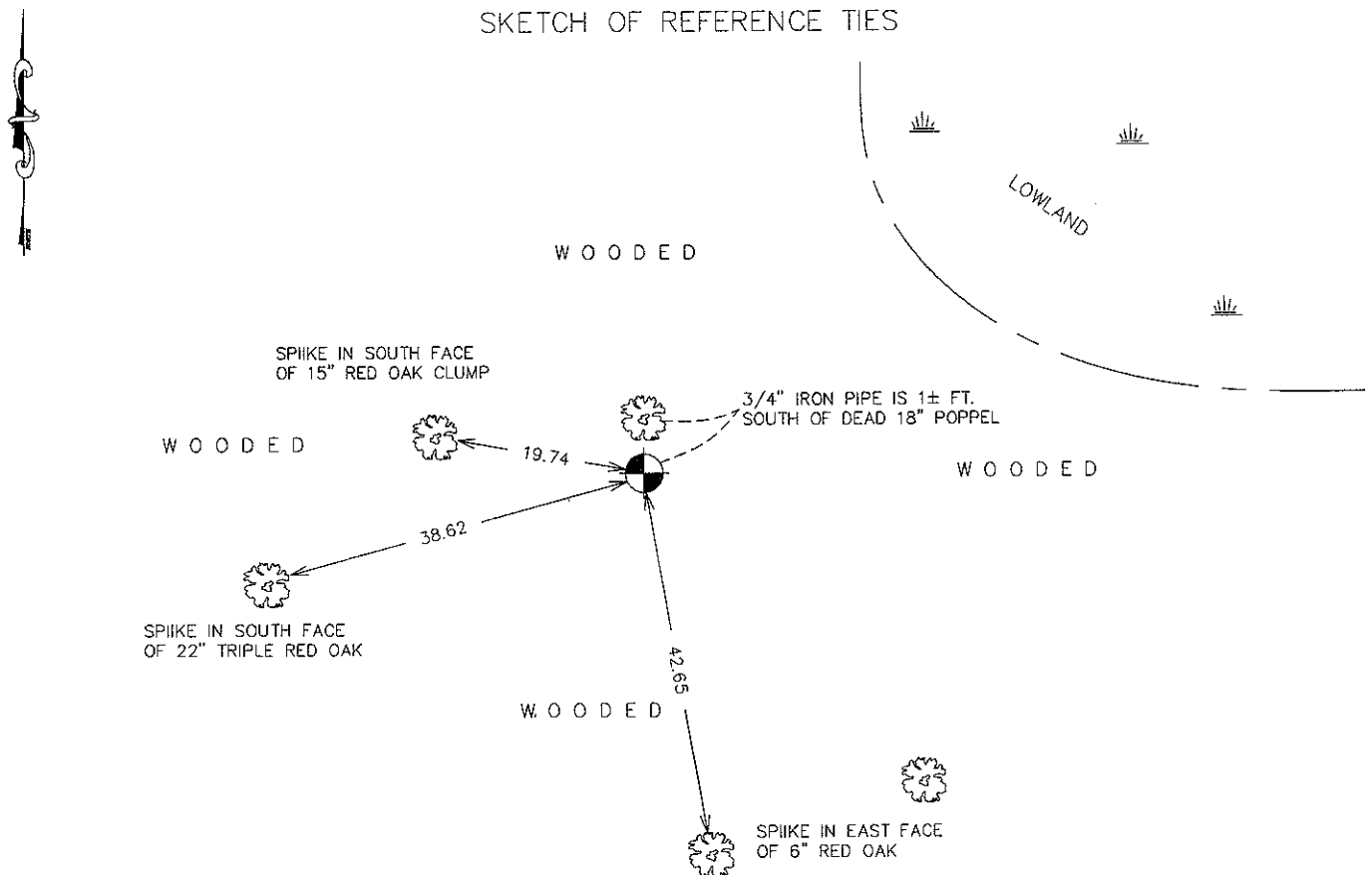
Northing= 256301.30

Easting= 442598.04

Note: NAD 1983, HARN 1996 Adjustment  
 coordinates are NOT compatible with  
 NAD 1983 coordinates

Note: 1 Meter=3937/1200 U.S. Survey Feet

SKETCH OF REFERENCE TIES



Statement of evidence relative to this corner location is on back of page.

I hereby certify that this document and the data contained herein was prepared by me or under my direct supervision.

*Ernest J. Rud*  
 Signature

2-02-2010  
 Date

Registration No. 9808

- Land Surveyor,       Professional Engineer  
 County Surveyor,     County Engineer

## OFFICE OF THE COUNTY RECORDER

County of \_\_\_\_\_

I hereby certify that this document was filed in the County Recorder's office at \_\_\_\_\_ M. on the

\_\_\_\_\_ day of \_\_\_\_\_ A.D., 20\_\_

County Recorder \_\_\_\_\_

BY \_\_\_\_\_ Deputy

**DOCUMENT NO.** \_\_\_\_\_

N 1/4 CORNER, SEC. 4, T42, R22

**STATEMENT OF EVIDENCE**

IN 1894, DURING THE ORIGINAL UNITED STATES G.L.O. SURVEY, THIS CORNER WAS ESTABLISHED AT 40.00 CHAINS FROM THE OPPOSING SECTION CORNERS. A WOOD POST WAS SET AND RECORDS WERE MADE TO THE FOLLOWING BEARING TREES:

12" DIA. SUGAR MAPLE, N20°W @ 26 LINKS

36" DIA. WHITE PINE, S50°E @ 30 LINKS

IN 1999 THE MINNESOTA DEPARTMENT OF NATURAL RESOURCES (MN DNR) PERFORMED A SURVEY OF THE LAKE FIVE WILDLIFE MANAGEMENT AREA TO THE WEST AND SOUTH IN SECTIONS 5, 8 AND 9.

IN OCTOBER 2004, KRAMER LEAS DeLEO, INC. PERFORMED A SURVEY IN THE NW 1/4 OF SEC. 4. EVIDENCE OF THE WOOD POST, BEARING TREES OR LINES OF OCCUPATION WAS NOT FOUND AT THIS TIME. THE NEAREST OPPOSING SECTION CORNERS FOUND TO BE MARKED BY A MONUMENT WERE THE NE CORNER OF SEC. 5 (MN DNR MONUMENT) AND THE NE CORNER OF SEC. 2 (IRON PIPE WITH PLASTIC CAP, UNREADABLE). THE DISTANCES WERE FOUND TO MEASURE 5239.76 FEET PER MILE OVER THE 2 MILES BETWEEN THE FOUND MONUMENTS. THE CORNER POSITION WAS ESTABLISHED USING SINGLE PROPORTIONAL MEASURE BETWEEN THE CORRESPONDING CORNERS AND 3/4" DIAMETER IRON PIPE WITH PLASTIC CAP STAMPED "RLS 40341" WAS SET AND REFERENCE TIMES WERE RECORDED.

SEE ATTACHED REPORT BY E.G. RUD AND SONS, INC.

## County Line between Township 42 & 43 Range 22

The GLO originally ran this line in 1849. The corners between Section 1 and 36 have been perpetuated through previous surveys by County and private surveyors along with corners between Section 2 and 35. From the northeast corner of Section 3 to the northwest corner of Section 6 records of previous surveys are non-existent. In 1997 and 1998 the D.N.R. under the supervision of Registered Land Surveyor, John Walker did extensive work to set corners in Sections 5, 8 and 9, Township 42, Range 22. In this survey work the North Quarter corner and the northeast corner of Section 5 were set and those locations accepted by surveyors doing subsequent surveys in Section 4. This leaves the North Quarter and northeast corner of Section 4 and the North Quarter corner of Section 3 to be established. The distance from the northeast corner of section 5 to the northeast corner of Section 3 measures 10479.5 feet and if this is divided equally it leaves 5239.75 feet for the north line of Sections 3 and 4. However there are some well established lines of occupation between Sections 3 and 34. At the Quarter corner there is a power line with a rock pile under it running to the North. There are fences running North and South at the East 1/16 corner and a gravel road running South at the northwest corner of Section 3. All these lines of occupation agree within themselves but this puts a 300 foot +/- surplus into the section line between Sections 3 and 34. The landowners, Brian Zimmerman and Phyllis Erickson, state the fences have been in since about 1950 but nobody knows how the location was established. Dale Anderson, Registered Land Surveyor #16091 doing a plat in Section 4, Sam DeLeo, Registered Land Surveyor #40341 doing a boundary survey in Section 4 and John Rengo, Registered Land Surveyor #25344 doing a boundary survey in Section 34 has put a priority on the need to set these 3 missing section corners.

Sam DeLeo pro rated the distance between northeast corners of Section 3 and 5 and set the North Quarter corner and northeast corner of Section 4.

The closest survey in Aitkin County we could find was a survey by Neubert Swanson done in 1959 and 1970 to set the southwest corner of Section 26, Township 43, Range 22 which is the northeast corner of Section 34. This corner was found and tied into E.G. Rud's survey. From the Northeast of 34 to the southeast corner computes to be 5305.86 feet. Neubert Swanson noted a post on his drawing and notes at the East Quarter corner of Section 34. Nuebert distance is 2676 feet from the northeast corner to the East Quarter corner of 34.

Nuebert also measured to a North-South line at the northwest corner of Section 34, which was established, by testimony and this distance is 5256.7 feet. If a line is drawn from the southwest corner of Section 34 (being set by proportionate measurement) to the Northwest corner of Section 27 a distance of 5214.56 is computed. Within reason and no search was made at northwest corner of Section 34.

3 excavations were made with the county backhoe. 1 excavation at northwest corner of Section 3, 1 at occupation line at North Quarter corner Section 3 and 1 at pro rated location for North Quarter corner Section 3.

### Northwest corner Section 3

An excavation 8 feet wide and 16 feet long was made at the pro rated location. A half inch iron pipe with Sam DeLeo's cap was found just below the surface. At the depth of 4 feet a 1 inch by 2 inch hub was found at original ground grade. No other evidence was found.

North Quarter corner Section 3 at occupation line

An excavation was made at the centerline of the road and power line going North. The excavation went 3 feet down but this roadway was in a cut section so if anything was set it got taken out with roadway construction.

North Quarter corner at pro rated distance

An excavation was made 8 feet wide and 20 feet long and 1 foot into natural ground. No evidence could be found. However at 6 feet West of the corner a large stump was encountered. The type of wood could not be determined. The government notes state that one of the bearing trees was a 30 inch White Pine 5 links Southwest of corner. No line trees were noted in this area.

Road Openings

(Section 10)

Road opening surveyed by John Nelson January 11, 1904 begins at southeast corner of Section 11; thence South 82 degrees, 36 minutes west 80.5 chains to southeast corner Section 10; thence North 7 degrees 35 minutes west 40.10 chains to East Quarter corner of Section 10; thence South 83 degrees West 83.11 chains to the West Quarter corner of Section 10; thence North 9 degrees 34 minutes west 40.06 chains to the southwest corner of Section 3. Stones were found at West Quarter corner of Section 10 and at southwest corner of Section 10.

(Section 2)

Road opening surveyed by John Nelson October 27, 1909 started at southeast corner of Section 2; thence North 9 degrees 42 minutes west 19.21 chains; thence South 71 degrees 45 minutes west 80.92 <sup>chains</sup> ~~feet~~; thence North 8 degrees 20 minutes West 60.33 <sup>feet</sup> ~~feet~~ to the northwest corner of Section 2. There is a very old road bed that follows along this opening but not open to the public anymore.

(Section 1-6)

Road opening dated August 20, 1912 created a road from the northeast corner of Section 1 to the northwest corner of Section 6. No survey was made; road is constructed only over the north lines of Section 1-3.

(Section 3)

Road opening dated March 2, 1917 starts at southwest corner of Section 10 and runs to West Quarter corner of Section 10. Opening then starts again at southwest corner of Section 3 and follows section line between section 3 and 4 except where the section line runs through a lake when the road will have to be established at the most convenient place running North to the Northwest corner of Section 3 where it terminates at the county line. A survey was not made for this opening.

Comparison of G.L.O. distance to measured distances

Section	1	GLO=5280	meas.	5256.45
Section	2	" "	"	5262.06
Section	3	" "	"	5239.73
Section	4	" "	"	5239.73
Section	5	" "	"	5264.74
Section	6	" <del>5451.6</del>	"	5435.84

Rufus Cook wrote in a note at the end of the T43, R23 notes the following:

Note In order to account for the deficiency in the length of the South boundary of Town 44 N R22W, I remeasured that line but finding no error on the measurement I concluded that there must be an error in the length of the south boundary of T43N R22W and was still more confident of that when I ranged West along the South boundary of T44N R23W and found no great excess in the length of that line and I consequently established these lines. I subsequently ascertained that though there is a slight and regular deficiency in each mile of the S boundary of T43N R22W yet there is no local error sufficient to account for the deficiency in the width on the north side of the Township. I was then convinced that the East & West boundaries of T43N R22W were run on different meridians - the East boundary corresponding with the established survey in the East while the West boundary corresponded with that on the West, and as by leaving the line between Ranges 22 & 23 as first run, the Subdivisions of Town 43 N R23W would be more true, the sections more nearly square and the east and west lines more nearly perpendicular to the North & South and as the survey of T43 NR22W would not be materially injured thereby I decided to make no correction of the Range line between Ranges 22&23.

JDW 8/14/07

