

# CERTIFICATE OF LOCATION OF GOVERNMENT CORNER

NORTHEAST Corner of Section 2, Township 42, Range 22, 4TH P.M.

STATE OF MINNESOTA, County of KANABEC

At the corner location shown on the sketch:

FOUND THIS MONUMENT  
AND ESTABLISHED KANABEC COUNTY COORDINATES ON ITS LOCATION.

Kanabec County U.S. Survey Feet Coordinates  
NAD 1983, HARN 1996 Adjustment  
Obtained by RTK GPS Observation

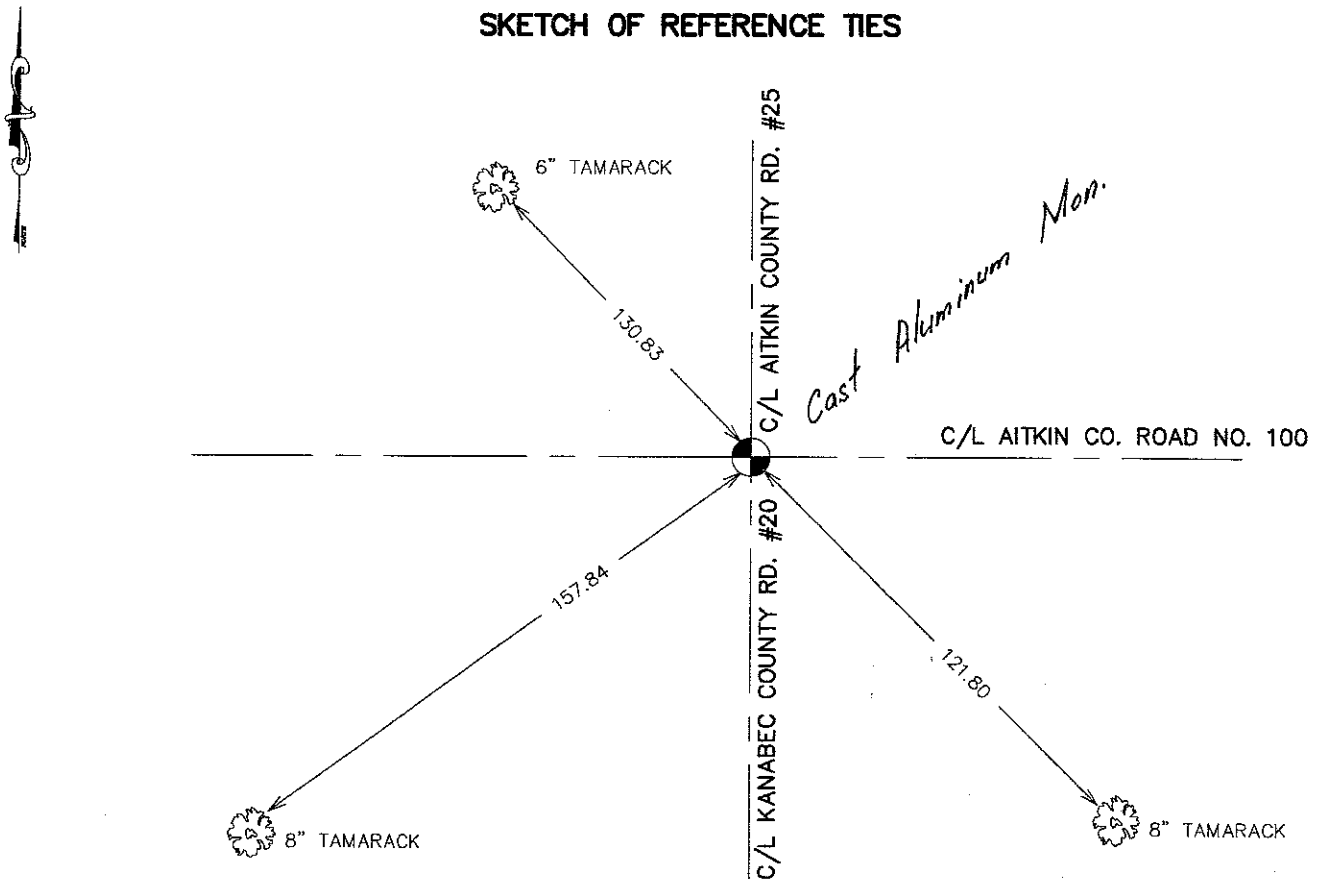
Northing= 256238.24

Easting= 455719.51

Note: NAD 1983, HARN 1996 Adjustment  
coordinates are NOT compatible with  
NAD 1983 coordinates

Note: 1 Meter=3937/1200 U.S. Survey Feet

## SKETCH OF REFERENCE TIES



Statement of evidence relative to this corner location is on back of page.

I hereby certify that this document and the data contained herein was prepared by me or under my direct supervision.

*Ernest J. Reed*  
Signature

8-20-2007  
Date

### OFFICE OF THE COUNTY RECORDER

County of \_\_\_\_\_

I hereby certify that this document was filed in the County Recorder's office at \_\_\_\_\_ M. on the \_\_\_\_\_ day of \_\_\_\_\_ A.D., 20\_\_\_\_

County Recorder \_\_\_\_\_

BY \_\_\_\_\_ Deputy

DOCUMENT NO. \_\_\_\_\_

Registration No. Minn No 9808

Land Surveyor,  Professional Engineer

County Surveyor,  County Engineer

NORTHEAST CORNER SECTION 2, T42, R22

**STATEMENT OF EVIDENCE**

ALL OF THE ORIGINAL GOVERNMENT BEARING TREES ARE NOW GONE.

IN 1955, CHARLES HANDSCHU, A REGISTERED LAND SURVEYOR, RECORDS FOR THE PLAT OF NELSON'S SUBDIVISION SHOW AN IRON PIPE AT THIS CORNER.

IN 1975, A SURVEY CREW WORKING FOR THE COUNTY, UNDER MY SUPERVISION, FOUND HANDSCHU'S IRON PIPE AND REPLACED IT WITH A CAST ALUMINUM MONUMENT.

ON OCTOBER 5, 1994, WE FOUND THE CAST ALUMINUM MONUMENT PER THE SURVEY RECORDS FROM 1975 AND MADE NEW REFERENCE TIES.

IN APRIL 2007 E.G. RUD AND SONS FOUND THE MONUMENT AND ESTABLISHED KANABEC COUNTY COORDINATES ON THIS POSITION.