

CERTIFICATE OF LOCATION OF GOVERNMENT CORNER

^{NE} Northwest Corner of Section ¹ 6, Township ²² 42, Range ²¹ 4 P.M.

STATE OF MINNESOTA, County of Pine & Kanabec

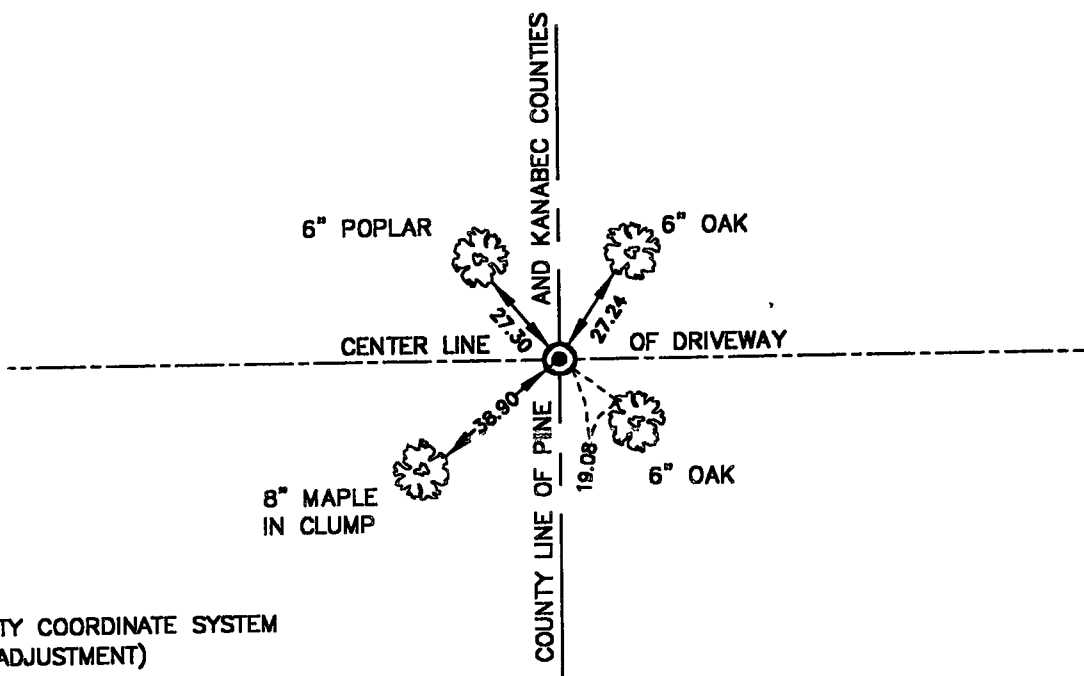
At the corner location shown on the sketch

On 12-6-00 found a 1" Iron Pipe, per Cert. on file at Pine Co. recorders Office.

left monument as found, [] lowered monument, [] removed monument (explain)

[] On _____ placed a _____

SKETCH OF REFERENCE TIES



MNDOT PINE COUNTY COORDINATE SYSTEM
(NAD83 HARN 96 ADJUSTMENT)
NORTHING = 256215.79
EASTING = 460975.68

TIES ARE TO A SPIKE IN BLAZE IN NEAR FACE.

Statement of evidence relative to this corner location is on back of page.

I hereby certify that this document and the data contained herein was prepared by me or under my direct supervision.

M. O. [Signature] 12-14-00
Signature Date

Registration No. 8195

[] Land Surveyor, [] Professional Engineer

County Surveyor, [] County Engineer

OFFICE OF THE COUNTY RECORDER

County of Kanabec

I hereby certify that this document was filed in the County Recorder's office at 3:00 P. M. on the 28 day of December A.D., 2000

County Recorder Rhonda A Olson

By _____ Deputy

DOCUMENT NO. _____

J/5

LAND CORNER HISTORY

NE. Corner of Section 6, Township 42, Range 21

In Sept. of 1994 we found a 1 inch iron pipe at this corner and filed a corner certificate

In March of 2000 we ran a survey along the west line of T. 42 R. 21 and corners east and west of the township line to locate existing monuments, lines of occupation and search areas.

We found the 1 inch iron pipe per the certificate on file and made new reference ties.