

CERTIFICATE OF LOCATION OF GOVERNMENT CORNER

E1/4 Corner of Section 01, Township 42, Range 22,
4th Principal Meridian, KANABEC County, State of Minnesota

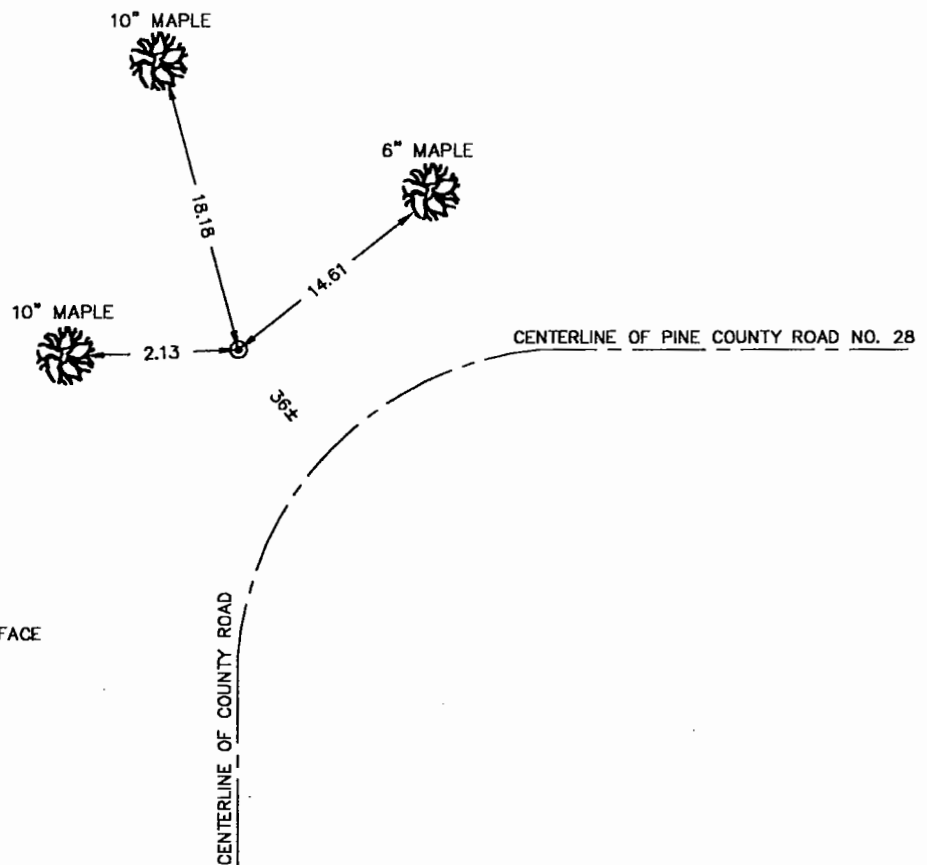
At the corner location shown on the sketch:
On 12/12/2000 Found a CAST ALUMINUM Monument
per certificate on file at the County Records
Office and left as found.

KANABEC County U.S. Survey Feet Coordinates
NAD 1983, HARN 1996 Adjustment
Obtained by RTK GPS observation
Northing: 253446.08
Easting: 460968.92

Note: NAD 1983, HARN 1996 Adjustment
coordinates are NOT compatible with
NAD 1983 coordinates

Note: 1 Meter=3937/1200 U.S. Survey Feet

SKETCH OF REFERENCE TIES



TIES ARE TO A SPIKE IN THE NEAR FACE

Statement of evidence relative to this corner location is on back of page.

I hereby certify that this document and
the data contained herein was prepared
by me or under my direct supervision.

M.B. [Signature] _____ 10-2-01 _____
Signature Date

License No. B195

- Land Surveyor
- Professional Engineer
- County Surveyor
- County Engineer

OFFICE OF THE COUNTY RECORDER

County of KANABEC

I hereby certify that this document was filed in the
County Records office at _____ .M. on the
_____ day of _____ A.D., 20_____

County Recorder _____
By _____, Deputy

DOCUMENT NO. _____

Kan. Co./36

Statement of Evidence:

Reference Certificate of Location of Government Corners dated 11/18/1994 and 2/13/1976.

On December 12, 2000 found a CAST Aluminum monument and assigned KANABEC County Coordinates.