

CERTIFICATE OF LOCATION OF GOVERNMENT CORNER

Northwest Corner of Section 7, Township 42, Range 21, 4 P.M.

STATE OF MINNESOTA, County of Pine

At the corner location shown on the sketch

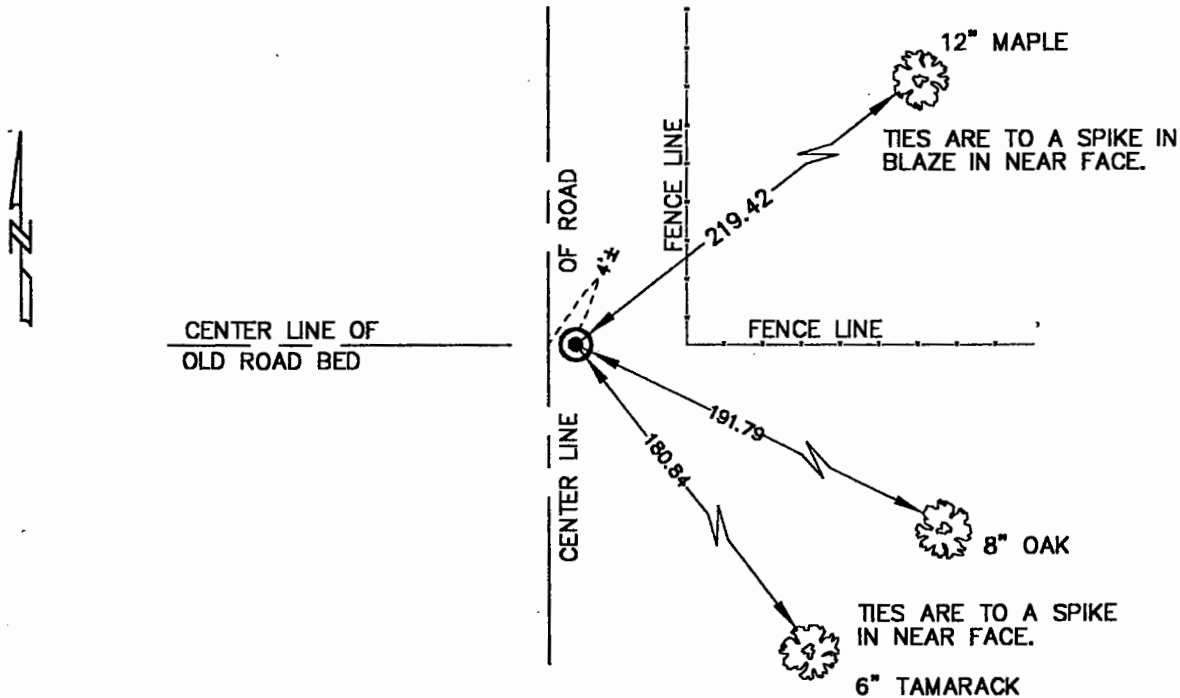
On 12-6-00 found a Cast Aluminum Monument, per Cert. on file in Pine Co. Recorders

Office. _____

left monument as found, [] lowered monument, [] removed monument (explain)

[] On _____ placed a _____

SKETCH OF REFERENCE TIES



J/5

MNDOT PINE COUNTY COORDINATE SYSTEM
(NAD83 HARN 96 ADJUSTMENT)
NORTHING = 250816.32
EASTING = 460953.94

Statement of evidence relative to this corner location is on back of page.

I hereby certify that this document and the data contained herein was prepared by me or under my direct supervision.

[Signature] 12-14-00
Signature Date

Registration No. 8195

[] Land Surveyor, [] Professional Engineer

County Surveyor, [] County Engineer

OFFICE OF THE COUNTY RECORDER

County of _____

I hereby certify that this document was filed in the County Recorder's office at _____ M. on the _____ day of _____ A.D., 19 _____

County Recorder _____

By _____ Deputy

DOCUMENT NO. _____

LAND CORNER HISTORY

NW. Corner of Section 7, Township 42, Range 21

In Sept. of 1994 we found a CAST ALUMINUM MONUMENT per the certificate on file and corner filed a new corner certificate.

In March of 2000 we ran a survey along the west line of T. 42 R. 21 and corners east and west of the township line to locate existing monuments, lines of occupation and search areas.

We found the CAST ALUMINUM MONUMENT per the certificate on file and made new reference ties.