

CERTIFICATE OF LOCATION OF GOVERNMENT CORNER

^{NE} Northwest Corner of Section ¹³ 18, Township ²² 42, Range ²¹ 4 P.M.

STATE OF MINNESOTA, County of Pine ~~4~~ KANABEE

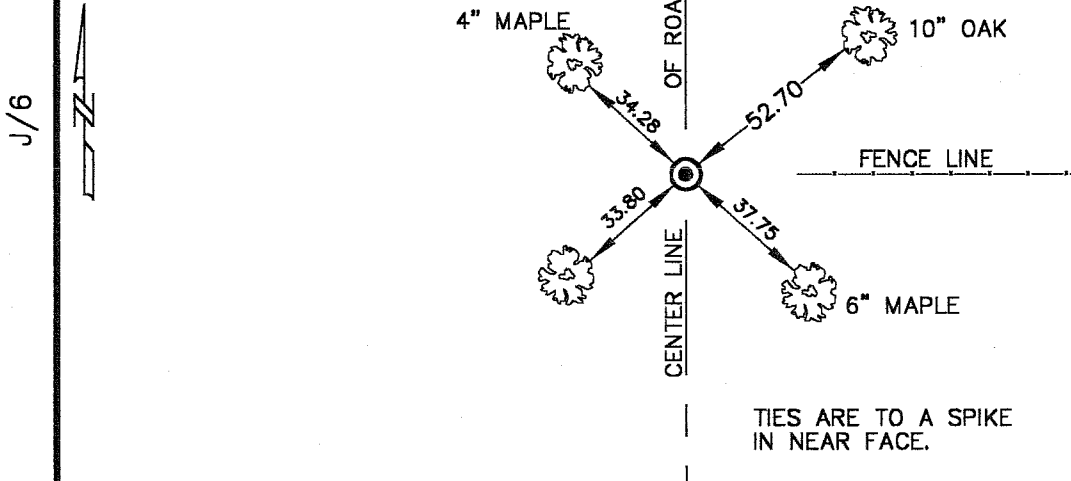
At the corner location shown on the sketch

On _____ found a _____
Date

left monument as found, lowered monument, removed monument (explain)

On 12-7-00 placed a 7/8" X 24" Capped Rebar
Date

SKETCH OF REFERENCE TIES



MNDOT PINE COUNTY COORDINATE SYSTEM
 (NAD83 HARN 96 ADJUSTMENT)
 NORTHING = 245561.99
 EASTING = 460903.78

Statement of evidence relative to this corner location is on back of page.

I hereby certify that this document and the data contained herein was prepared by me or under my direct supervision.

M. B. [Signature] 12-14-00
Signature Date

Registration No. 8195

Land Surveyor, Professional Engineer

County Surveyor, County Engineer

OFFICE OF THE COUNTY RECORDER

County of _____

I hereby certify that this document was filed in the County Recorder's office at _____ M. on the _____ day of _____ A.D., 19 _____

County Recorder _____

By _____ Deputy

DOCUMENT NO. _____

LAND CORNER HISTORY

NW. Corner of Section 18 Township 42 Range 21

All of the original bearing trees are now gone.

In March of 2000 we ran a survey along the west line of T. 42 R. 21 and corners east and west of the township line to locate existing monuments, lines of occupation and search areas.

There is no resurvey data on file in the Pine of or Kanabec court house for this corner.

There is a minimum maintenance road running from the NW corner of sec. 7 south to a point south of the NW corner of sec. 18.

There is evidence of an old fence line 1 foot north of a newer fence running east from this corner.

On May 11th, 2000 we made an excavation with the county backhoe at this corner. The excavation was 10 feet square center on the centerline of the road and fence line east extended west, the excavation was 2 feet deep 1 foot into natural ground. No evidence was found in the excavation.

The center line of the existing north – south road and old fence line east extended west was accepted as the best available evidence of the perpetuated corner location.