

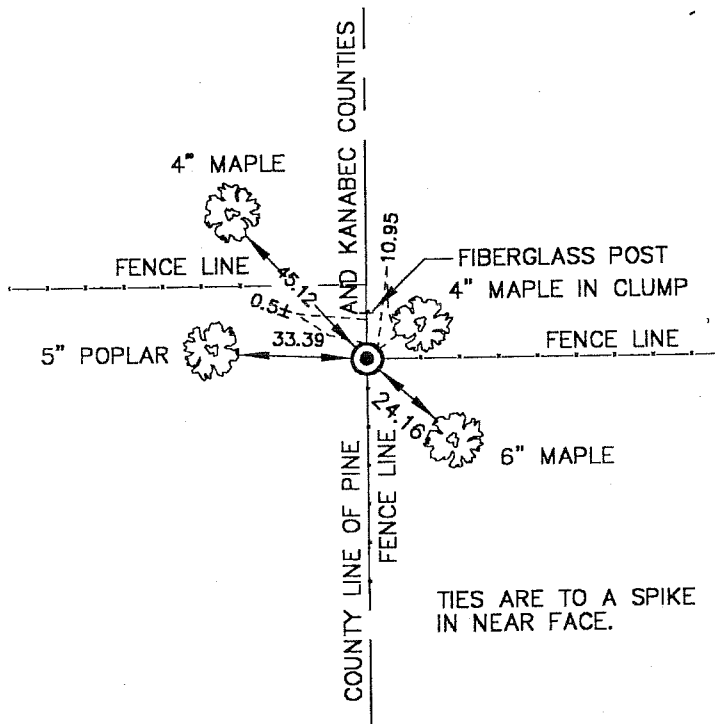
CERTIFICATE OF LOCATION OF GOVERNMENT CORNER

NE
Northwest Corner of Section 24 19, Township 42, Range 22 21, 4 P.M.
STATE OF MINNESOTA, County of Pine ~~← KANABEC~~

At the corner location shown on the sketch

- [] On _____ found a _____
Date _____
- [] left monument as found, [] lowered monument, [] removed monument (explain)
- [X] On 12-7-00 placed a 7/8" X 24" Capped Rebar
Date _____

SKETCH OF REFERENCE TIES



MNDOT PINE COUNTY COORDINATE SYSTEM
(NAD83 HARN 96 ADJUSTMENT)
NORTHING = 240338.54
EASTING = 460830.42

Statement of evidence relative to this corner location is on back of page.

I hereby certify that this document and the data contained herein was prepared by me or under my direct supervision.

[Signature] 12-14-00
Signature Date

Registration No. 8195

- [] Land Surveyor, [] Professional Engineer
[X] County Surveyor, [] County Engineer

OFFICE OF THE COUNTY RECORDER

County of _____

I hereby certify that this document was filed in the County Recorder's office at _____ M. on the _____ day of _____ A.D., 19 _____

County Recorder _____

By _____ Deputy

DOCUMENT NO. _____

J/6

LAND CORNER HISTORY

NW. Corner of Section 19 Township 42 Range 21

All of the original bearing trees are now gone.

In March of 2000 we ran a survey along the west line of T. 42 R. 21 and corners east and west of the township line to locate existing monuments, lines of occupation and search areas.

There is no resurvey data on file in the Pine of or Kanabec court house for this corner.

There is a fence line running south and east from this corner and a fence running west 30 feet north of the fence line east.

After analyze the field measurements and lines of occupation the fence corner at the fence line running east was accepted as the best available evidence of the perpetuated corner location.