

# CERTIFICATE OF LOCATION OF GOVERNMENT CORNER

<sup>E 1/4</sup>  
 West Quarter \_\_\_\_\_ Corner of Section <sup>24</sup> 19, Township 42, Range <sup>22</sup> 21, 4 P.M.

STATE OF MINNESOTA, County of Pine ~~KANABEK~~

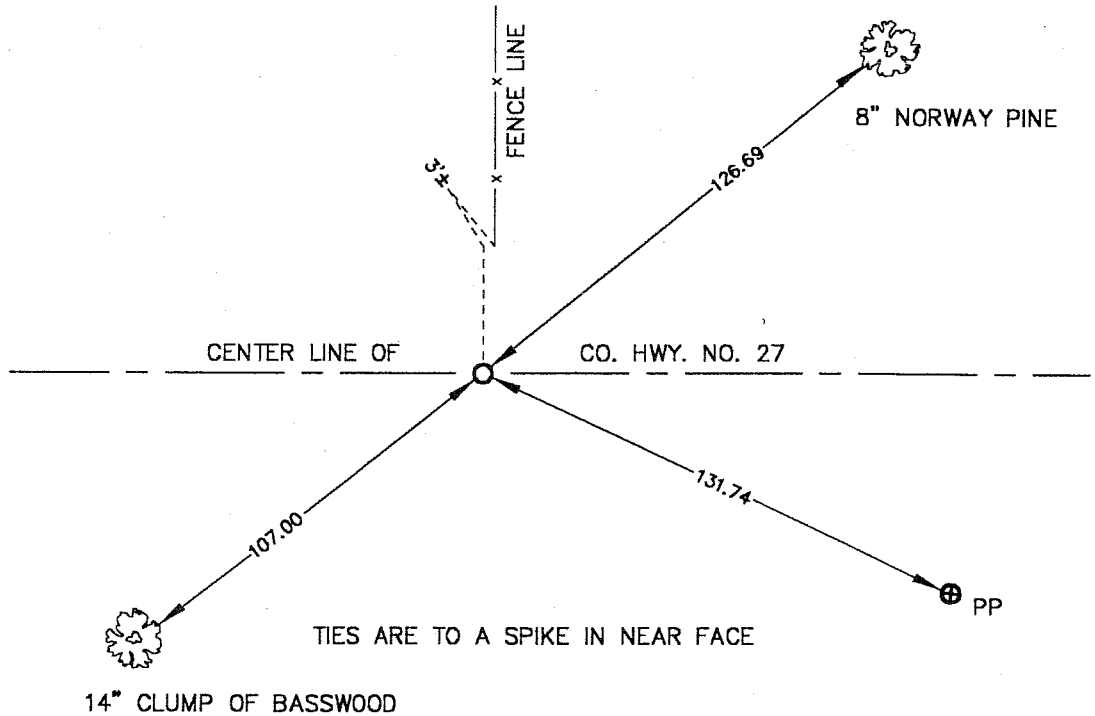
At the corner location shown on the sketch

On 11-12-99 found a 3/4" Iron Pipe  
Date

left monument as found,  lowered monument,  removed monument (explain)

On 11-13-00 placed a Spike  
Date

### SKETCH OF REFERENCE TIES



J/2

MNDOT PINE COUNTY COORDINATE SYSTEM  
 (NAD83 HARN 96 ADJUSTMENT)  
 NORTHING = 237720.37  
 EASTING = 460786.60

Statement of evidence relative to this corner location is on back of page.

I hereby certify that this document and the data contained herein was prepared by me or under my direct supervision.

M. B. [Signature] 12-14-00  
Signature Date

Registration No. 8195

Land Surveyor,  Professional Engineer

County Surveyor,  County Engineer

### OFFICE OF THE COUNTY RECORDER

County of \_\_\_\_\_

I hereby certify that this document was filed in the County Recorder's office at \_\_\_\_\_ M. on the \_\_\_\_\_ day of \_\_\_\_\_ A.D., 19 \_\_\_\_\_

County Recorder \_\_\_\_\_

By \_\_\_\_\_ Deputy

DOCUMENT NO. \_\_\_\_\_

## LAND CORNER HISTORY

W ¼ Corner of Section 19 Township 42 Range 21

All of the original bearing trees are now gone.

There is a township road order on file at the county auditors office dated may 23<sup>rd</sup>, 1931 that calls for the widening of a township road, to run west from the center of section 21 two and ½ miles to county line at the center of the west line of section 19.

In march of 2000 we ran a survey along the west line of T. 42 R. 21 to locate existing monuments, lines of occupation and search areas

County hwy. No. 27 runs along the east west ¼ line of section 19.

The county hwy. dept. set a iron pipe at this corner in the centerline of existing east – west road and fence line north extended south in 1966.

We found the county hwy. dept. iron pipe in the centerline of existing hwy no. 27 and 3 feet west of the existing fence line north extended south.

On may 17<sup>th</sup> 2000 we offset the iron pipe and made an excavation with the co. backhoe. The excavation was 3 feet west to 10 feet east and 3 feet north to 10 feet south of the found iron pipe. At 3 feet below the road surface in an old roadbed we found a 60-penny spike in the same horizontal location as the found pipe. We continued the excavation 1 more foot but no additional evidence was found.

The found county hwy dept iron pipe was accepted as the best available evidence of the perpetuated location of this corner.