

CERTIFICATE OF LOCATION OF GOVERNMENT CORNER

West Quarter E14 Corner of Section 25²⁵/₃₀, Township 42, Range 22/₂₁, 4 P.M.

STATE OF MINNESOTA, County of Pine KANABEC

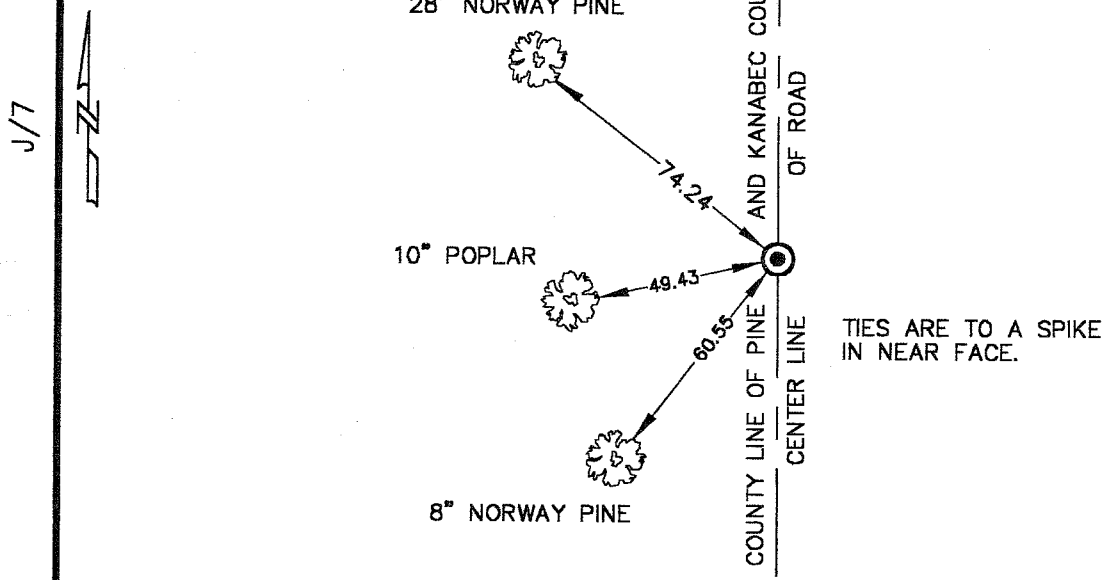
At the corner location shown on the sketch

On _____ found a _____
Date

left monument as found, lowered monument, removed monument (explain)

On 12-8-00 placed a 7/8" X 24" Capped Rebar
Date

SKETCH OF REFERENCE TIES



MNDOT PINE COUNTY COORDINATE SYSTEM
 (NAD83 HARN 96 ADJUSTMENT)
 NORTHING = 232468.35
 EASTING = 460722.77

Statement of evidence relative to this corner location is on back of page.

I hereby certify that this document and the data contained herein was prepared by me or under my direct supervision.

[Signature] 12-14-00
Signature Date

Registration No. 8195

Land Surveyor, Professional Engineer
 County Surveyor, County Engineer

OFFICE OF THE COUNTY RECORDER

County of _____

I hereby certify that this document was filed in the County Recorder's office at _____ M. on the _____ day of _____ A.D., 19 _____

County Recorder _____

By _____ Deputy

DOCUMENT NO. _____

LAND CORNER HISTORY

W 1/4. Corner of Section 30 Township 42 Range 21

All of the original bearing trees are now gone.

In March of 2000 we ran a survey along the west line of T. 42 R. 21 and corners east and west of the township line to locate existing monuments, lines of occupation and search areas.

There is no resurvey data on file in the Pine or Kanabec court house for this corner.

There are no lines of occupation east or west from this corner.

There is a township road running from the SW corner of Sec. 30 north to a point north of the W 1/4 corner of Sec. 30.

On May 11th, 2000 we made an excavation with the county backhoe at this corner. The excavation was 10 feet wide east-west and 15 feet long north-south center on the centerline of the road and a proportional measurement between the SW corner of Sec. 30 and the W 1/4 corner of Sec. 19; the excavation was 3 feet deep 1 foot into natural ground. No evidence was found in the excavation.

The center line of the existing north – south road and the mean of fence line 1/4 mile north of the W 1/4 corner and a proportional measurement from the SW corner of Sec.30 to the W 1/4 corner of Sec. 19 was accepted as the best available evidence of the perpetuated corner location.