

CERTIFICATE OF LOCATION OF GOVERNMENT CORNER

^{NE}
Northwest Corner of Section ³⁶ 31, Township 42, Range ²² 21, 4 P.M.

STATE OF MINNESOTA, County of Pine

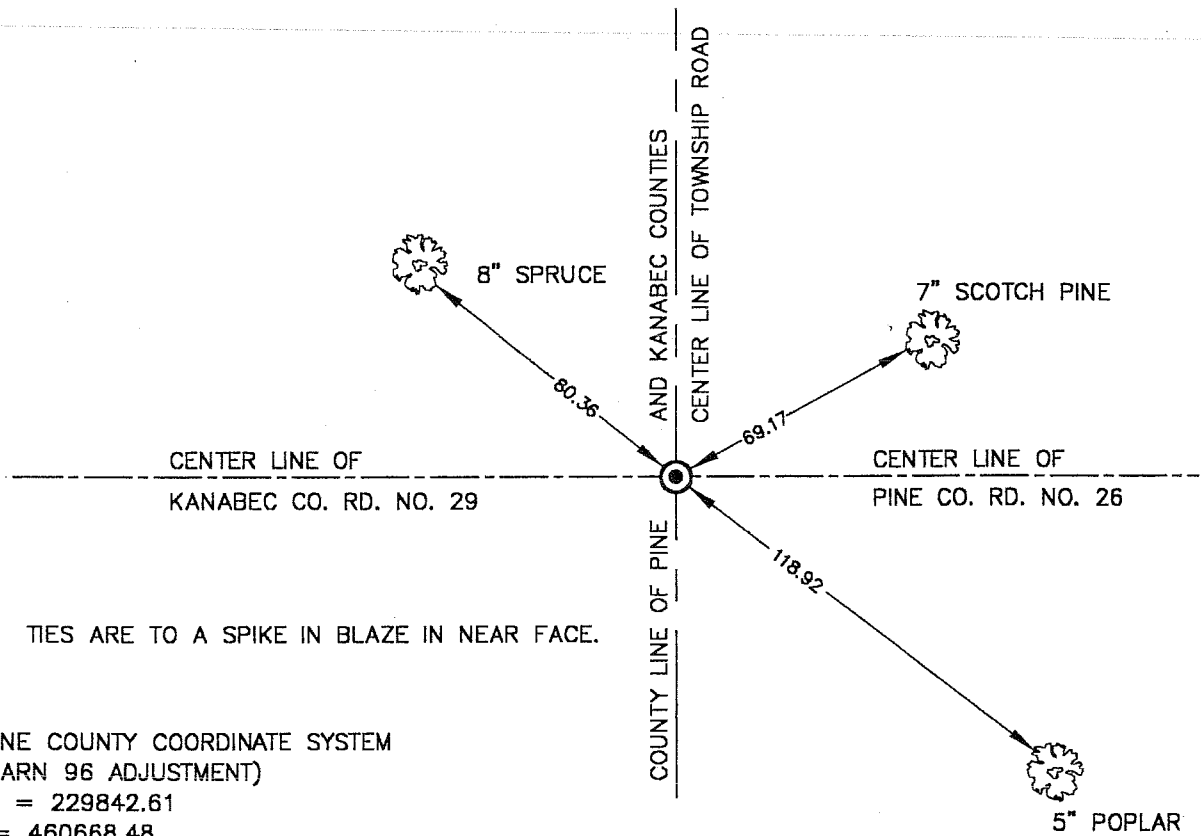
At the corner location shown on the sketch

On 12-5-00 found a 7/8" X 24" Capped Rebar, per Cert. on file at Pine Co. recorders Office.

left monument as found, [] lowered monument, [] removed monument (explain)

[] On _____ placed a _____

SKETCH OF REFERENCE TIES



TIES ARE TO A SPIKE IN BLAZE IN NEAR FACE.

MNDOT PINE COUNTY COORDINATE SYSTEM
(NAD83 HARN 96 ADJUSTMENT)
NORTHING = 229842.61
EASTING = 460668.48

Statement of evidence relative to this corner location is on back of page.

I hereby certify that this document and the data contained herein was prepared by me or under my direct supervision.

J.M. B. B. 12-14-00
Signature Date

Registration No. 8195

[] Land Surveyor, [] Professional Engineer

County Surveyor, [] County Engineer

OFFICE OF THE COUNTY RECORDER

County of _____

I hereby certify that this document was filed in the County Recorder's office at _____ M. on the _____ day of _____ A.D., 19 _____

County Recorder _____

By _____ Deputy

DOCUMENT NO. _____

J/5

LAND CORNER HISTORY

NW Corner of Section 31 Township 42 Range 21

In 1994 we set a 7/8 inch by 24 inch capped rebar at this corner and filed a corner certificate.

In march of 2000 we ran a survey along the west line of T. 42 R. 21 and corners east and west of the township line to locate existing monuments, lines of occupation and search areas.

We found the capped rebar per the certificate on file and made new reference ties.

CERTIFICATE OF LOCATION OF GOVERNMENT CORNER

NE Corner of Section 36, Township 42, Range 22, 4TH P.M.
STATE OF MINNESOTA, County of KANABEC

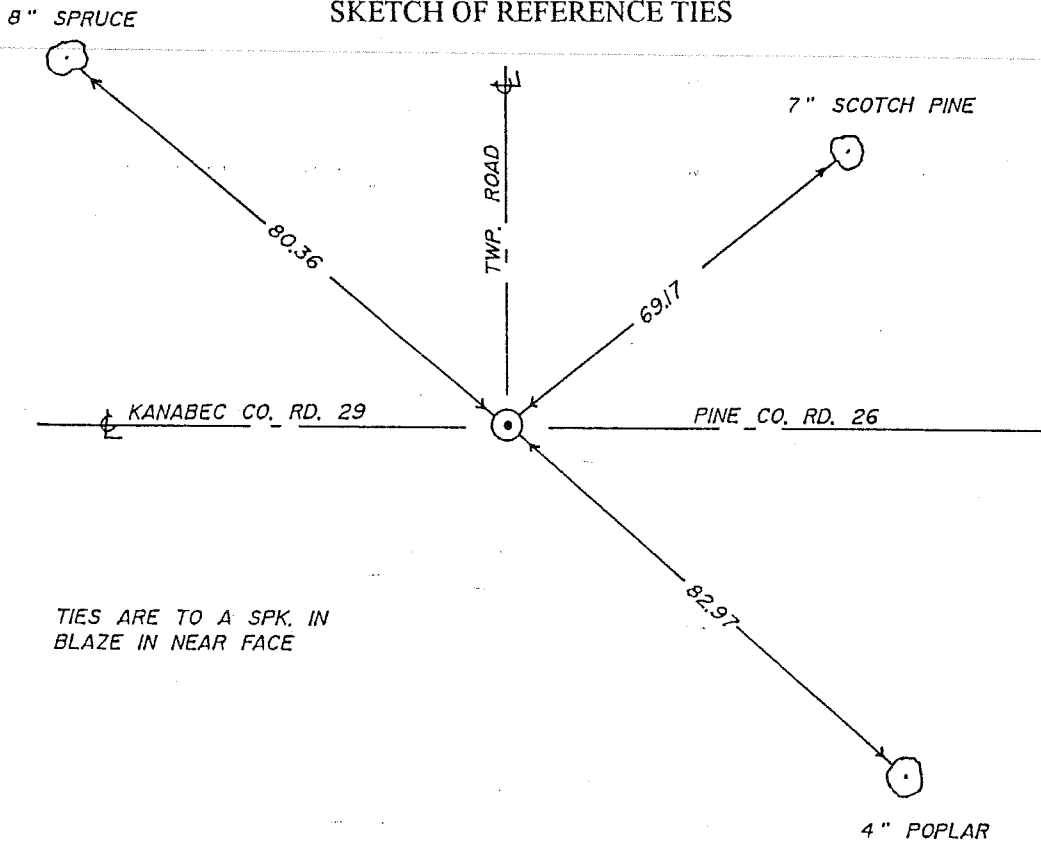
At the corner location shown on the sketch

On _____ found a _____
Date

left monument as found, lowered monument, removed monument (explain)

On 7-19-94 placed a 7/8" x 24" CAPPED REBAR
Date

SKETCH OF REFERENCE TIES



TIES ARE TO A SPK. IN
BLAZE IN NEAR FACE

Statement of evidence relative to this corner location is on back of page.

I hereby certify that this document and the data contained herein was prepared by me or under my direct supervision.

[Signature] 9-29-94
Signature Date

Registration No. 8195

Land Surveyor, Professional Engineer

County Surveyor, County Engineer

OFFICE OF THE COUNTY RECORDER

County of _____

I hereby certify that this document was filed in the County Recorder's office at _____ M. on the

_____ day of _____ A.D., 19 _____

County Recorder _____

By _____ Deputy

DOCUMENT NO. _____

I
11

All of the original government bearing trees are now gone.

In 1921, former County Surveyor, James Buckley, set a stone with a cross mark per the records at the Pine County Recorder's Office.

In 1903, John Nelson made a road survey starting at the northeast corner of Section 36, Township ~~42~~, Range 22 and then run west.

In December of 1993, we made a survey along the north line of Section 36, Township 42, Range 22, to locate existing monuments, lines of occupation and establish search areas.

On May 26, 1994, we made a 3' by 15' by 15' excavation with a backhoe and found no evidence of the corner.

The center line intersection of existing roads was accepted as the best available evidence of the original corner per the township orders on file.